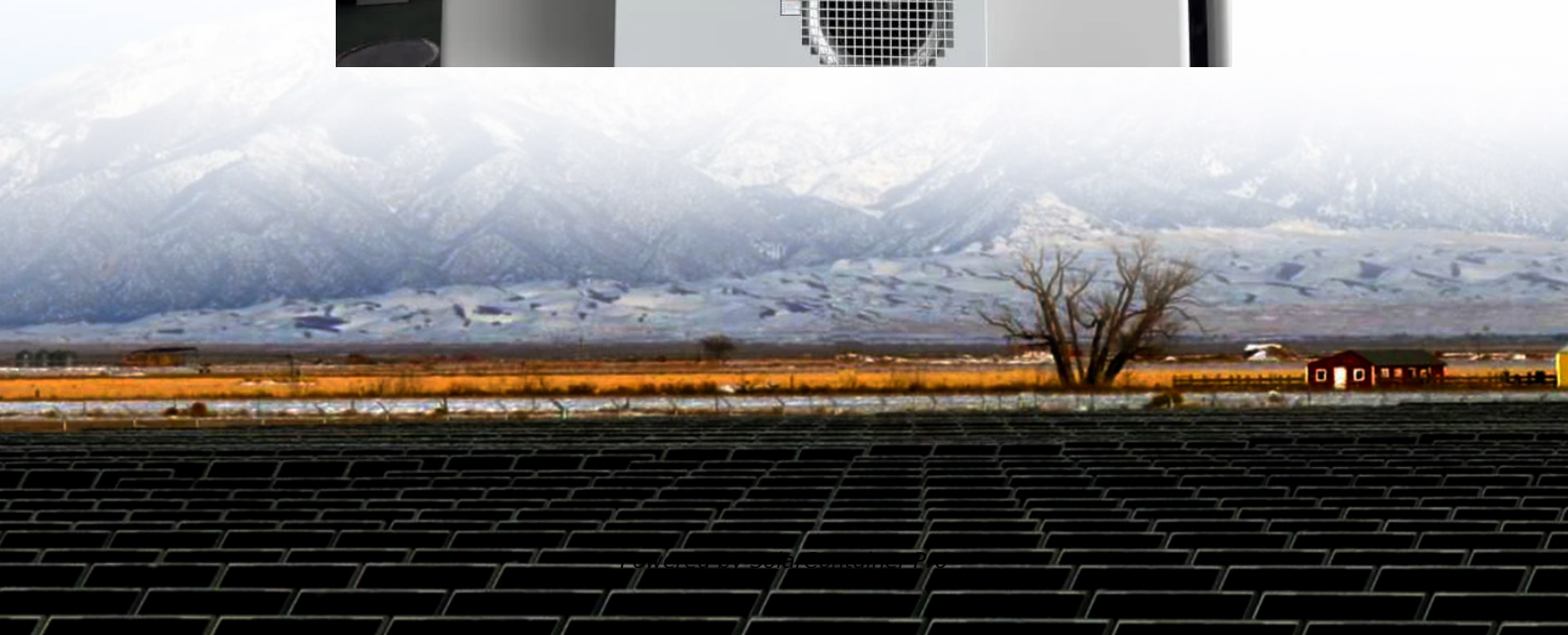


How many watts does a 12v 20a solar panel hold





Overview

12V 20A controllers have a maximum capacity of 240 watts. The only way to run a 300W solar panel is to use a 24V 20A controller or higher. It is true that solar panels do not always run at their stated output. A 300W panel might only reach 200 watts during cloudy days for instance. Can a 100 watt solar panel charge a 12 volt battery?

For example, if you have a small RV or a compact solar setup, a 100-watt monocrystalline panel can effectively charge your 12-volt battery under optimal sunlight conditions. These panels also perform better in low-light conditions compared to other types.

How much wattage should a solar panel charge?

If using an 80% efficient panel, you might increase your wattage need slightly: Adjusted watts: $480 \text{ watts} \div 0.8 = 600 \text{ watts}$. This approach helps you choose an appropriate solar panel wattage to effectively charge your 12-volt battery. Adjust calculations based on unique conditions and equipment used.

How many watts do you need to charge a 12 volt battery?

For a 100Ah, 12-volt battery, you'll need 1,200 watt-hours to fully charge it. Divide this number by the average sunlight hours per day in your area to determine the required solar panel wattage. If you get 5 hours of sunlight, you'll need at least a 240-watt solar panel to recharge this battery adequately after daily use.

What size solar panel do I Need?

Required Solar Panel Size (W): The sizes are quadruple those needed for 12V batteries with the same capacity, due to the higher voltage. A 100Ah 48V battery requires a 240W panel, while a 100Ah 12V battery needs a 60W panel. The higher the voltage of the battery, the larger the solar panel required to charge it, all else being equal.

How many Watts Does a solar panel need?



Divide this number by the average sunlight hours per day in your area to determine the required solar panel wattage. If you get 5 hours of sunlight, you'll need at least a 240-watt solar panel to recharge this battery adequately after daily use. Solar panel efficiency impacts how well panels convert sunlight into usable electricity.

How do I choose the right wattage for my solar panel?

Selecting the right wattage for your solar panel is crucial. Choose a panel based on these requirements: Battery Size: Larger batteries, such as a 200Ah battery, require more power. A 200Ah battery needs approximately 2,400 watt-hours (200Ah x 12V). Sunlight Hours: Assess local sunlight availability.



How many watts does a 12v 20a solar panel hold



[How Many Watts Can a 20A Charge Controller Handle?](#)

Calculating Wattage Requirements: Determine the wattage needed by multiplying the battery's amp-hour rating by its voltage, then dividing that number by available sunlight ...

[WhatsApp](#)

[DIY Guide to Running Appliances on Solar Power](#)

How Many Solar Panels Do You Need? As we stated earlier, 20-30 solar panels can produce 900-1000kwh per month, the average power consumption of an American home. But the number ...

[WhatsApp](#)



What Size Solar Panel Do I Need to Charge a 12v Battery?

Discover the right solar panel size to efficiently charge your 12V battery. Learn how to calculate wattage, consider battery capacity, and optimize your solar charging setup for maximum ...

[WhatsApp](#)



How many watts of solar can a 20amp mppt charge control handle?

Since 360 watts of solar is above Will's recommended 100-200 watts for the minimalist blueprint, but below the 400 watts in his classic



blueprint- do I need to add a circuit ...

[WhatsApp](#)



[How Many Watts Can a 50 amp Charge Controller Handle?](#)

In this article, we will explore how many watts a 50 amp charge controller can handle (with an example), what does voltage and amps mean on a charge controller, and what ...

[WhatsApp](#)



How Many Solar Watts To Charge A 12V Battery Efficiently: A ...

To charge a 12V 100Ah lead-acid battery, you need approximately 200W of solar panels. This considers the battery's 50% usable capacity and an efficiency factor of 1.18. A ...

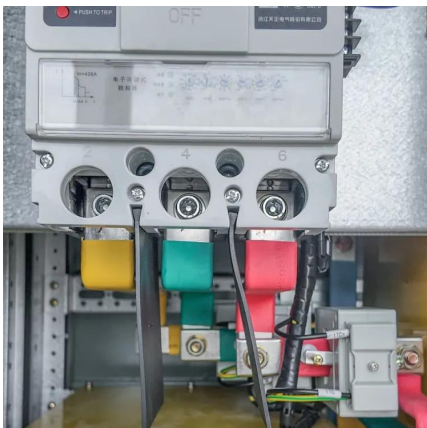
[WhatsApp](#)



How Many Solar Panel Watts for 12V Battery Charging: A ...

To charge a 12V battery with a capacity of 100 amp-hours in five hours, you need at least 240 watts from your solar panels (20 amps x 12 volts). A 300-watt solar panel or three ...

[WhatsApp](#)

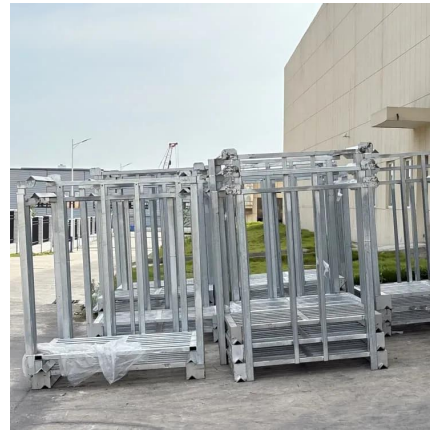




[How Many Watts Can a 20A Charge Controller Handle?](#)

A 20A charge controller can handle 240 watts on a 12V solar system and 480 watts if the system is 24V. More advanced charge controllers support 12V and 24V solar panels and can adjust its ...

[WhatsApp](#)



How Many Watt Solar Panel to Charge 12 Volt Battery: Calculate ...

Calculating Wattage Requirements: Determine the wattage needed by multiplying the battery's amp-hour rating by its voltage, then dividing that number by available sunlight ...

[WhatsApp](#)

Solar Panel Size Calculator , Check Battery Charge Duration

Once all fields are filled, click 'Calculate' to see the required solar panel size for your system. The result displays the solar panel size in watts, helping you to understand the ...

[WhatsApp](#)



How many watts of solar panels are needed for a 20a battery

Multiplying the daily energy demand by 1.2 (to account for inefficiencies), one would need around 30 watts of solar panels. Depending on the energy requirements, this figure may ...

[WhatsApp](#)



Contact Us

For catalog requests, pricing, or partnerships, please visit:
<https://www.straighta.co.za>