

# How big a photovoltaic panel should I use for a 24v 20a battery





## Overview

---

Use our free online solar panel size calculator to find out what size solar panel to charge a 24v battery in desired peak sun hours. Note: Click [here](#) to read our in-depth post on how to use this calculator and what factors it takes into account and some shortcomings of this calculator.

Note: Click [here](#) to read our in-depth post on how to use this calculator and what factors it takes into account and some shortcomings of this.

Here's a chart on what size solar panel you need to charge different capacity 24v lead-acid and Lithium (LiFePO4) batteries in 5 peak sun hours using an MPPT charge controller.

Here's a chart about what size solar panel you need to charge a 24v 100ah lead-acid and lithium battery using an MPPT charge controller with different peak sun hours.

Here's a chart about what size solar panel you need to charge a 24v 200ah lead-acid and lithium battery using an MPPT charge controller with different peak sun hours.

Turns out, you need about 550 watts of solar panels to fully charge a 24v 200ah lead acid battery from 50% depth of discharge in 6 peak sun hours. Note: Deep cycle batteries are designed to be charged and discharged at a specific rate, which is called c-rating. How many solar panels do you need to charge a 24v battery?

You need around 1-1.2 kilowatt (kW) of solar panels to charge most of the 24V lithium (LiFePO4) batteries from 100% depth of discharge in 5 peak sun hours. [How Many Solar Panels Does It Take To Charge A 24v 200Ah Battery?](#)

.

Can a solar panel charge a 12V battery?

Turns out, you need a 100 watt solar panel to charge a 12V 100Ah lithium battery in 16 peak sun hours with an MPPT charge controller. [What Size Solar Panel to Charge 12V Battery?](#)



12 volt batteries are the most common voltage I see people using in their solar power setups.

What is a solar panel and Battery sizing calculator?

A Solar Panel and Battery Sizing Calculator is an invaluable tool designed to help you determine the optimal size of solar panels and batteries required to meet your energy needs. By inputting specific details about your energy consumption, this calculator provides tailored insights into the solar setup that will best suit your requirements.

Which battery size is best for a solar power system?

The 12V 50Ah battery is another common battery size in solar power systems. Some car batteries are also 50Ah. Because lead acid batteries only have 50% usable capacity, a 50Ah LiFePO4 battery has as much usable capacity as a 100Ah lead acid battery.

Can a 100 watt solar panel charge a lithium battery?

To fully charge a 100Ah 12V lithium battery using these 10 peak sun hours of sunlight, you would need a 108-watt solar panel. Practically, you would use a 100-watt solar panel, and in a little bit more than 2 days, you will have a full 100Ah 12V lithium battery.

How many batteries can a 400 watt solar panel charge?

As we can see, a 400-watt solar panel will need 2.7 peak sun hours to charge a 100Ah 12V lithium battery. If we presume that we get 5 peak sun hours per day, we can actually fully charge almost two 100Ah batteries (or one 200Ah battery).



## How big a photovoltaic panel should I use for a 24v 20a battery

---



### Solar Battery Size Calculator: What size battery do I need?

What size solar panel array do you need for your home? And if you're considering battery storage, what solar battery size would be most appropriate? This article includes tables ...

[WhatsApp](#)

### [Solar Panel Size Calculator: What Size Panel Do I Need?](#)

Turns out, you need a 100 watt solar panel to charge a 12V 100Ah lithium battery in 16 peak sun hours with an MPPT charge controller. What Size Solar Panel to Charge 12V ...

[WhatsApp](#)



### [The Complete Off Grid Solar System Sizing Calculator](#)

Using your daily energy usage and Peak Sun Hours, and assuming a system efficiency of 70%, the calculator estimates the Wattage required for your off-grid solar system's ...

[WhatsApp](#)



### How to Calculate Solar Panel, Battery, and Inverter Size

Determining the right sizes for solar panels, batteries, and inverters is essential for an efficient and reliable solar energy system.





Accurate sizing ensures your system meets energy needs, ...

[WhatsApp](#)



### What Size Solar Panel To Charge 100Ah Battery? (Calculator)

You just input how many volt battery you have (12V, 24V, 48V) and type of battery (lithium, deep cycle, lead-acid), and how quickly you want the battery to be charged, and the calculator will ...

[WhatsApp](#)



### What Size Solar Panel for 24 Volt Battery: A Complete Guide to ...

This article will guide you through the process of choosing the right solar panel size for your 24-volt battery. You'll learn about factors like your energy consumption, battery ...

[WhatsApp](#)



### [How to Size a Solar System \[Step-by-Step Guide\]](#)

Online solar calculators can give a rough estimate of how much solar you need to power your home, but you may want to perform your own sizing calculations to fine-tune your choices. ...

[WhatsApp](#)

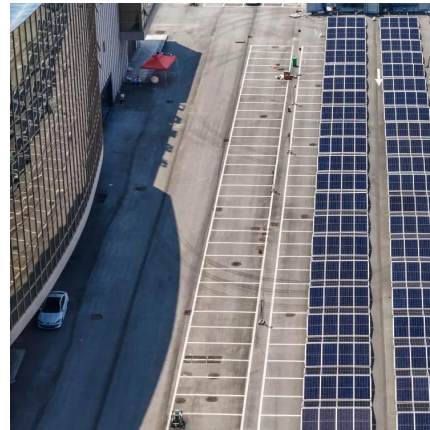




### Solar Panel Size To Charge A 12V Battery (50Ah, 80, 100, 120, ...)

For most setups, solar panels with wattage between 100 and 120 provide enough wattage to charge a 12V battery. Technically, you can use any size solar panel to charge your ...

[WhatsApp](#)



### [What Size Charge Controller For a 300 Watt Solar Panel?](#)

The formula is: Solar panel watts / volts = amps + 20% = charge controller size So with a 12V 300 watt solar panel, the formula looks like this: 300 watts / 12V = 25 amps + 20% = 30 You need ...

[WhatsApp](#)

### What Size Solar Panel To Charge 24v Battery? (incl. Calculator)

Use our free online solar panel size calculator to find out what size solar panel to charge a 24v battery in desired peak sun hours. Note: Click here to read our in-depth post on ...

[WhatsApp](#)



## Contact Us

For catalog requests, pricing, or partnerships, please visit:  
<https://www.straightta.co.za>