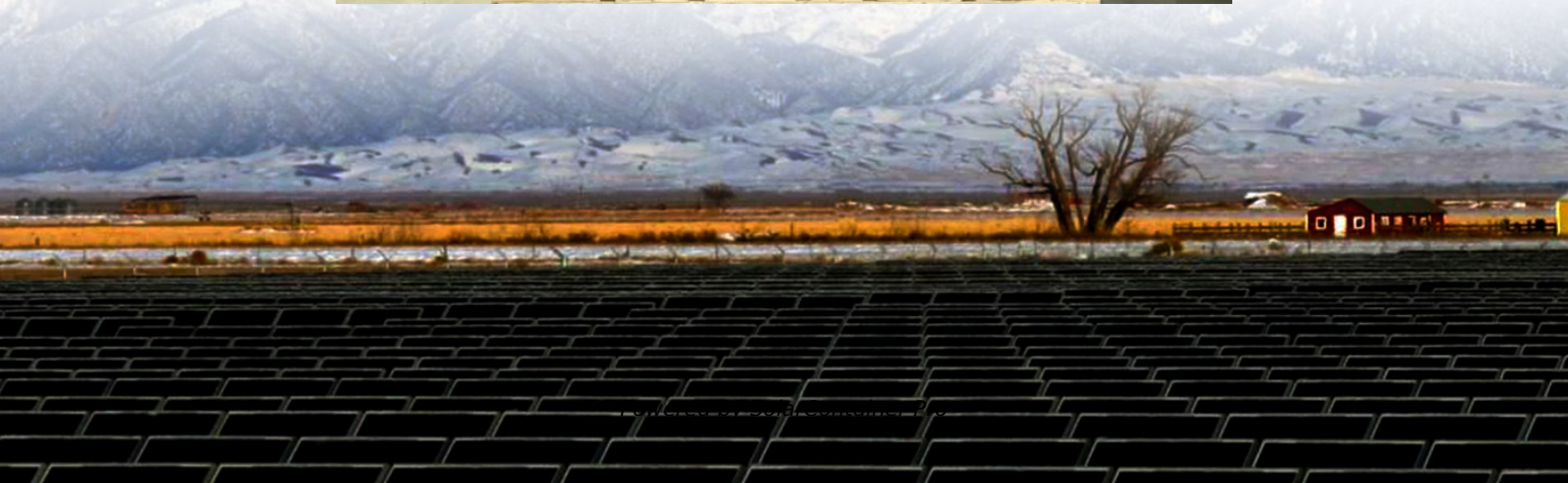


Charge and discharge times of energy storage lead-acid batteries





Overview

What is the charge state of a lead acid battery?

The charge state of a lead acid battery refers to how much energy it holds at a given time. A fully charged battery retains charge better than one that is partially discharged. Batteries should be kept above 50% charge to minimize sulfation, a process where lead sulfate crystals form, impeding charge retention over time.

When should a lead acid battery be fully charged?

Periodically fully charging a lead-acid battery is essential to maintain capacity and usability. In traditional UPS or cyclic use, full recharge normally occurs following any discharge. This is in contrast to partial-state-of-charge use. In this use case, multiple shallow cycles of less than 50% of the battery capacity occur before a full charge.

How does battery maintenance affect the life of a lead acid battery?

Routine maintenance significantly influences lead acid battery lifespan. Regular maintenance helps to ensure optimal battery performance and extends its usable life. The main components involved in battery maintenance include checking fluid levels, cleaning terminals, and ensuring proper charging. First, checking fluid levels is essential.

How long does a lead-acid battery last?

This is the primary factor that limits battery lifetime. Deep-cycle lead-acid batteries appropriate for energy storage applications are designed to withstand repeated discharges to 20 % and have cycle lifetimes of ~2000, which corresponds to about five years. Battery capacity is reported in amp-hours (Ah) at a given discharge rate.

What happens if you store a battery in a discharged state?

Storing them in a discharged state can lead to sulfation—a condition where



lead sulfate crystals form on the battery plates, ultimately decreasing capacity. The Battery Council International recommends charging batteries to their full capacity before any period of storage.

What happens when a battery discharges?

When the battery discharges, electrons released at the negative electrode flow through the external load to the positive electrode (recall conventional current flows in the opposite direction of electron flow). The voltage of a typical single lead-acid cell is ~ 2 V.



Charge and discharge times of energy storage lead-acid batteries



A Comparison of Lead Acid to Lithium-ion in Stationary ...

Most renewable energy battery charge controllers and discharge inverters are capable of being adjusted between lead acid and lithium-ion. Charge controller and inverter manufacturers and ...

[WhatsApp](#)

How Does a Lead Acid Battery Work?

4 days ago · A lead-acid battery comprises a number of pairs of lead-based plates, with separators between these plates. This assembly is inside a strong plastic case, containing an ...

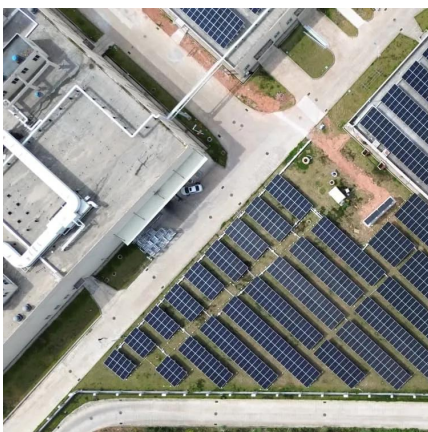
[WhatsApp](#)



[Lead-acid battery charging and discharging knowledge](#)

The characteristics of Lead-acid battery during charging and discharging, including the change of terminal voltage over time and the influence of potential changes and internal ...

[WhatsApp](#)



Complete Guide: Lead Acid vs. Lithium Ion Battery Comparison

Part 6. Lead-acid vs. Lithium-ion batteries: considerations for battery selection When selecting between lead acid batteries and lithium-



ion batteries, consider the following ...

[WhatsApp](#)



Investigations into the Charge Times of Lead-Acid Cells under

Knowing how long charging will take and what the variability in time required is allows for better planning of operations and algorithm creation for battery energy storage ...

[WhatsApp](#)



[Grid-Scale Battery Storage: Frequently Asked Questions](#)

Storage duration is the amount of time storage can discharge at its power capacity before depleting its energy capacity. For example, a battery with 1 MW of power capacity and 4 MWh ...

[WhatsApp](#)



[Lead batteries for utility energy storage: A review](#)

Electrical energy storage with lead batteries is well established and is being successfully applied to utility energy storage. Improvements to lead battery technology have ...

[WhatsApp](#)





How many times can the energy storage battery be charged and ...

Several intrinsic and extrinsic factors influence how many times an energy storage battery can go through its charge and discharge cycles. Usage patterns play a significant role ...

[WhatsApp](#)



Lead Acid Battery Lifespan: How Long It Holds Charge, Shelf ...

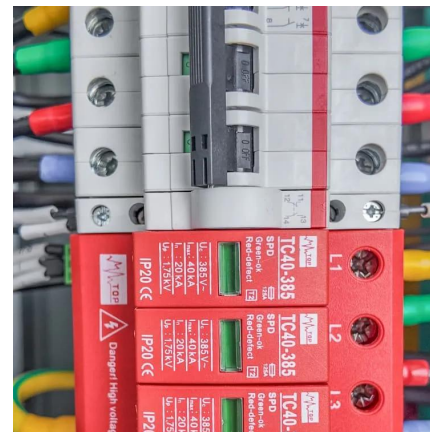
Lead acid batteries usually maintain their charge for 5 to 6 hours during normal use. They take around 8 hours to recharge completely. After charging, allow about 8 hours for ...

[WhatsApp](#)

Best Practices for Charging and Discharging Sealed Lead-Acid ...

Charging and discharging these batteries correctly is vital for maximizing their lifespan and performance. Charging refers to the process of replenishing the battery's energy ...

[WhatsApp](#)



Best Practices for Charging and Discharging Sealed Lead-Acid Batteries

Charging and discharging these batteries correctly is vital for maximizing their lifespan and performance. Charging refers to the process of replenishing the battery's energy ...

[WhatsApp](#)



Impact of high constant charging current rates on the charge/discharge

The charging and discharging of lead acid batteries using Traditional Charge Controllers (TCC) take place at constantly changing current rates. These techniques do not ...

[WhatsApp](#)



[2.60 S2020 Lecture 11: Batteries and Energy Storage](#)

Lithium Ion batteries The open circuit potential of a LiCoO_2 battery is $\sim 4.2 \text{ V}$. Specific energy is $\sim 3\text{-}5\text{X}$, specific power is 2X higher than lead-acid. ~~~sfLCffbllllulsollo Table shows the ...

[WhatsApp](#)



Contact Us

For catalog requests, pricing, or partnerships, please visit:
<https://www.straightta.co.za>