

Wind power use in Belgium s emergency communication base stations





Overview

Wind power is one of the fastest-growing technologies for renewable energy generation. Unfortunately, in the recent years some cases of degradation on certain telecommunication systems have arisen.

What is Belgium doing about nuclear power?

Anticipating the nuclear phase-out by 2025, Belgium introduced a EUR 1.2 billion plan to secure electricity and reduce emissions, focusing on expanding offshore wind and providing incentives for renewable energy solutions. C-Power (Thorntonbank) was the first wind farm operational in the Belgian North Sea.

How can Belgium improve wind energy?

With some research projects like GREDOR or SmartWater in the Walloon Region, Belgium is developing services that will ease the future integration of a larger share of wind energy by modernizing the electric grid and offering capacity for clearly tailored storage.

Does Belgium have wind power?

Wind power in Belgium has seen significant advancements, starting with the generation of electricity from offshore wind farms in 2009. By 2020, the capacity of these offshore farms reached 2,262 megawatts (MW), matching the combined output of Belgium's largest nuclear reactors, Doel 4 and Tihange 3.

Can wind energy be used to power mobile phone base stations?

Worldwide thousands of base stations provide relaying mobile phone signals. Every off-grid base station has a diesel generator up to 4 kW to provide electricity for the electronic equipment involved. The presentation will give attention to the requirements on using windenergy as an energy source for powering mobile phone base stations.

Is Belgium developing offshore wind energy in 2021?



The International Energy Agency (IEA) noted Belgium's significant offshore wind energy development, ranking it sixth globally in 2021.

How many wind turbines are there in Belgium?

In 2022, the 399 wind turbines, spread over nine offshore zones, produced approximately 6.77 TWh. This corresponds to the annual electricity demand of almost 2 million households, or 8% of the total electricity demand in Belgium.



Wind power use in Belgium s emergency communication base station



Energy-Efficient Networking for Emergency Communications with Air Base

The research on the location deployment of air base station can effectively enhance the flexibility, real-time and adaptability of the network, and get full use of the energy, ...

[WhatsApp](#)

Base stations placement optimization in wireless networks for emergency

Disaster relief operations rely on the rapid deployment of wireless network architectures to provide emergency communications. Future emergency networks will consist typically of terrestrial, ...

[WhatsApp](#)



Deep Neural Network-Based Backhaul Algorithm in Emergency Communication

Emergency communication is a key link to ensure the stable operation of communication networks. And large-scale multiple-input multiple-output (MIMO) technology can significantly ...

[WhatsApp](#)

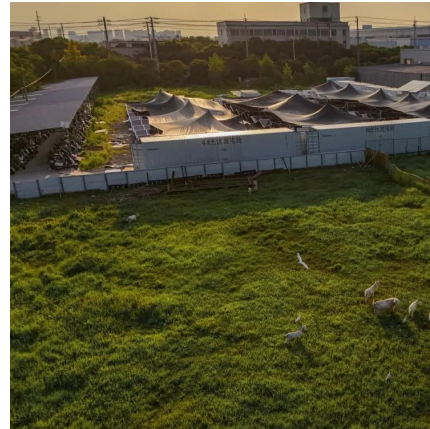
Environmental Impact Assessment of Power Generation Systems ...

Hybrid power systems were used to minimize the environmental impact of power generation at GSM (global systems for mobile communication)



base station sites. This paper presents the ...

[WhatsApp](#)



Exploiting Wind Turbine-Mounted Base Stations to Enhance ...

We investigate the use of wind turbine-mounted base stations (WTBSs) as a cost-effective solution for regions with high wind energy potential, since it could replace or even outperform ...

[WhatsApp](#)



Reliability prediction and evaluation of communication base ...

And it can be used to judge whether the location of communication base stations is proper, to reduce the probability of failure of post-earthquake communication base stations, so that ...

[WhatsApp](#)



[Wind Turbines for Emergency Power: Are They Worth It?](#)

A basic wind turbine system includes the turbine itself, a tower, a charge controller, an inverter, and battery banks. Depending on setup, some systems may also integrate with solar panels to ...

[WhatsApp](#)





[Keeping Belgian North Sea wind farms connected](#)

After 2010, taller, more powerful wind turbines began to be used and countries such as Belgium enacted laws requiring these be constructed further from shore, meaning vessels ...

[WhatsApp](#)



Resource management in cellular base stations powered by ...

This paper aims to consolidate the work carried out in making base station (BS) green and energy efficient by integrating renewable energy sources (RES). Clean and green ...

[WhatsApp](#)

Impact analysis of wind farms on telecommunication services

This paper presents a comprehensive review on the impact of wind turbines on the telecommunication services, with special dedication to the methodology to be applied in order ...

[WhatsApp](#)



Energy-Efficient Networking for Emergency Communications with ...

The research on the location deployment of air base station can effectively enhance the flexibility, real-time and adaptability of the network, and get full use of the energy, ...

[WhatsApp](#)



Contact Us

For catalog requests, pricing, or partnerships, please visit:
<https://www.straighta.co.za>