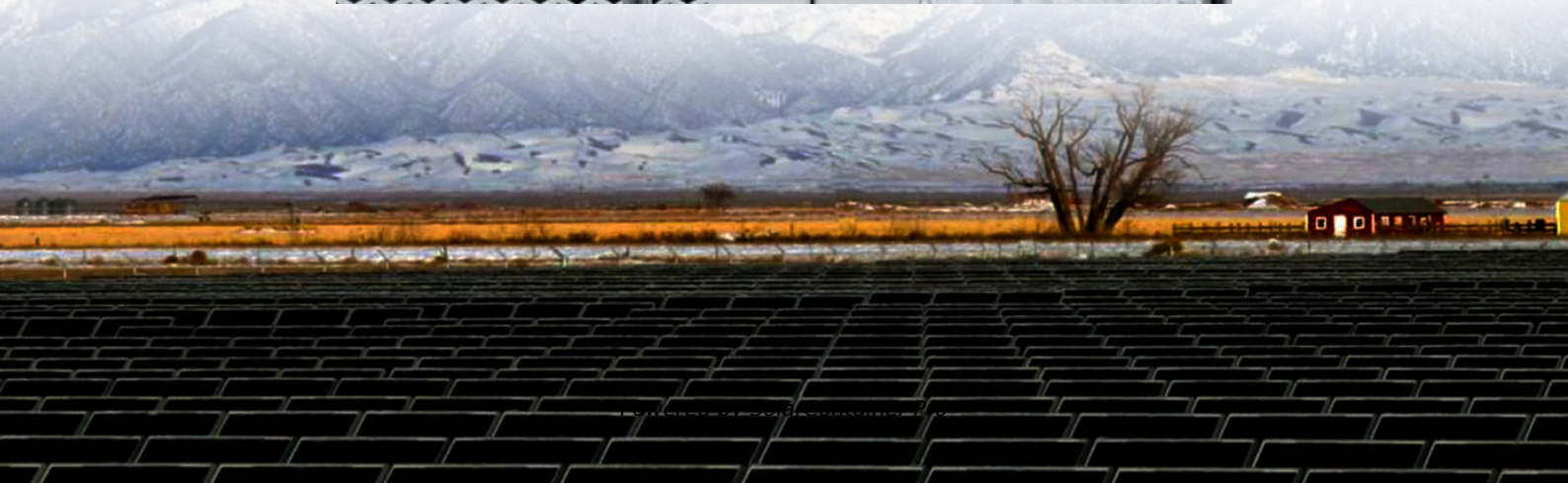


Wind power usage environment for communication base stations





Overview

Can wind energy be used to power mobile phone base stations?

Worldwide thousands of base stations provide relaying mobile phone signals. Every off-grid base station has a diesel generator up to 4 kW to provide electricity for the electronic equipment involved. The presentation will give attention to the requirements on using windenergy as an energy source for powering mobile phone base stations.

How do base stations affect mobile cellular network power consumption?

Base stations represent the main contributor to the energy consumption of a mobile cellular network. Since traffic load in mobile networks significantly varies during a working or weekend day, it is important to quantify the influence of these variations on the base station power consumption.

Is there a direct relationship between base station traffic load and power consumption?

The real data in terms of the power consumption and traffic load have been obtained from continuous measurements performed on a fully operated base station site. Measurements show the existence of a direct relationship between base station traffic load and power consumption.

Why do off-grid telecommunication base stations need generators?

As the incessant demand for wireless communication grows, off-grid telecommunication base station sites continue to be introduced around the globe. In rural or remote areas, where power from the grid is unavailable or unreliable, these cell sites require generator sets to provide power security as prime power or backup standby power.

What is the largest energy consumer in a base station?

The largest energy consumer in the BS is the power amplifier, which has a share of around 65% of the total energy consumption . Of the other base



station elements, significant energy consumers are: air conditioning (17.5%), digital signal processing (10%) and AC/DC conversion elements (7.5%) .

Which base station elements consume the most energy?

Of the other base station elements, significant energy consumers are: air conditioning (17.5%), digital signal processing (10%) and AC/DC conversion elements (7.5%) . New research aimed at reducing energy consumption in the cellular access networks can be viewed in terms of three levels: component, link and network.



Wind power usage environment for communication base stations



[Communication Base Station Energy Power Supply System](#)

The wind-solar-diesel hybrid power supply system of the communication base station is composed of a wind turbine, a solar cell module, an integrated controller for hybrid energy ...

[WhatsApp](#)

What is a base station energy storage power station , NenPower

Wind energy also plays a crucial role in the operations of these energy storage stations. Wind turbines can generate vast amounts of electricity, especially in coastal or ...

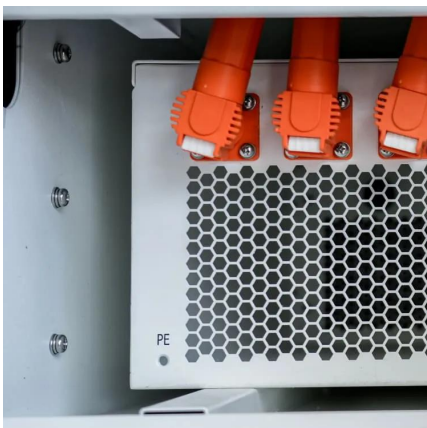
[WhatsApp](#)



[DESIGN AND SIMULATION OF WIND TURBINE ENERGY ...](#)

Mobile towers and Base Transceiver Stations now use traditional diesel generators with battery banks for backup power (BTSs). The design, installation, and testing of a system that ...

[WhatsApp](#)



[Power consumption based on 5G communication](#)

This paper proposes a power control algorithm based on energy efficiency, which combines cell breathing technology and base station sleep technology to reduce base station energy ...



[WhatsApp](#)



Exploiting Wind Turbine-Mounted Base Stations to Enhance ...

We investigate the use of wind turbine-mounted base stations (WTBSs) as a cost-effective solution for regions with high wind energy potential, since it could replace or even outperform ...

[WhatsApp](#)



Ane Solar Wind Hybrid Power Supply System for Communication Base Station

The communication base station supply systemsolution plan A. System introductionThe new energy communication base station supply system is mainly used for those small base station ...

[WhatsApp](#)



Measurements and Modelling of Base Station Power Consumption under Real

The real data in terms of the power consumption and traffic load have been obtained from continuous measurements performed on a fully operated base station site.

[WhatsApp](#)





Environmental-economic analysis of the secondary use of electric

This study examines the environmental and economic feasibility of using repurposed spent electric vehicle (EV) lithium-ion batteries (LIBs) in the ESS of ...

[WhatsApp](#)



The Role of Hybrid Energy Systems in Powering Telecom Base Stations

Discover how hybrid energy systems, combining solar, wind, and battery storage, are transforming telecom base station power, reducing costs, and boosting sustainability.

[WhatsApp](#)

Mobile base station site as a virtual power plant for grid stability

Furthermore, it seeks to determine if the full activation time can meet the requirements of an FFR product. The system consists of a live mobile base station site with a ...

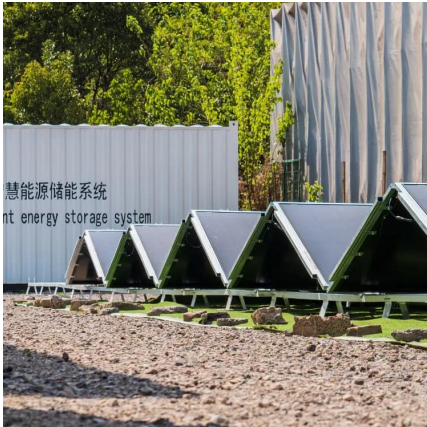
[WhatsApp](#)



Hybrid Energy Mobile Wireless Telecom Base Station

Discover the power of our Hybrid Energy Mobile Wireless Station, offering seamless, energy-efficient telecom base site solutions. Designed for versatility with solar, wind, and diesel ...

[WhatsApp](#)



Resource management in cellular base stations powered by ...

Abstract This paper aims to consolidate the work carried out in making base station (BS) green and energy efficient by integrating renewable energy sources (RES). Clean and ...

[WhatsApp](#)



Communication base station power station based on wind-solar

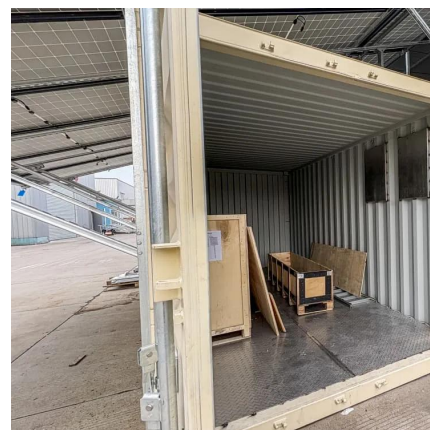
The communication base station power station based on wind-solar complementation comprises a foundation base, a communication tower mast, a base station machine room, a wind power ...

[WhatsApp](#)

[A Sustainable Approach to Reduce Power Consumption and](#)

In this case, a hybrid renewable energy solution like solar energy and wind power is proposed which will be used to power these cellular base stations. Solar energy can power ...

[WhatsApp](#)





Resource management in cellular base stations powered by ...

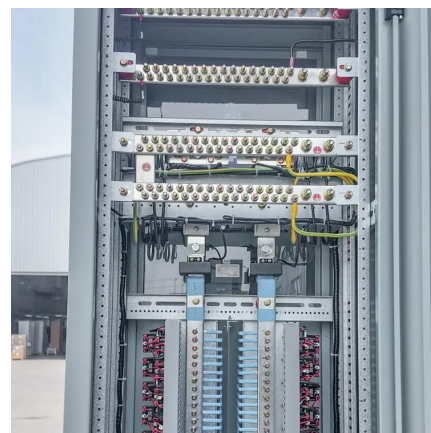
Although installation cost of energy from non-renewable fuel is still lower than RES, optimized use of the two sources can yield the best results. This paper presents a ...

[WhatsApp](#)

[Wind Power Station Global Communication Concept Stock](#)

Find Wind Power Station Global Communication Concept stock images in HD and millions of other royalty-free stock photos, illustrations and vectors in the Shutterstock collection. ...

[WhatsApp](#)



A review of renewable energy based power supply options for ...

Moreover, information related to growth of the telecom industry, telecom tower configurations and power supply needs, conventional power supply options, and hybrid system ...

[WhatsApp](#)



How to make wind solar hybrid systems for telecom stations?

Then, the application of wind solar hybrid systems to generate electricity at communication base stations can effectively improve the comprehensive utilization of wind and solar energy.

[WhatsApp](#)



[Communication Base Station Energy Power Supply System](#)

The hybrid power supply system of wind solar with diesel for communication base stations is one of the best solutions to solve this problem. The wind-solar-diesel hybrid power supply system ...

[WhatsApp](#)



[EFFICIENT POWER UTILIZATION IN COMMUNICATION ...](#)

This paper consists of categorizing telecommunication Base Stations (BTS) for India and their power consumption. He also proposes some parameters for saving energy that clears the ...

[WhatsApp](#)



Contact Us

For catalog requests, pricing, or partnerships, please visit:
<https://www.straightta.co.za>