

Wind power storage foundation





Overview

Is a new gravitational energy storage system based on wind turbine jacket structures?

This article proposes a novel offshore gravitational energy storage technology scheme, based on the foundation of wind turbine jacket structures, integrating a new gravitational energy storage system to form an integrated "wind power + storage" structure, as illustrated in Figure 1.

Who uses foundation Windpower?

Customers include cement plants, mines, food processors, manufacturers, refrigerated warehouses, data centers, water treatment plants and utilities where Foundation Windpower deploys utility-scale wind equipment in configurations up to 25 MW. LATEST NEWS: 2018 Nestlé Waters' third turbine is installed!.

What is a wind turbine generator foundation?

Wind turbine generator (WTG) foundations are estimated to represent approximately 25% of the balance of plant (BOP) cost of a wind farm. The foundation supports a multimillion-dollar asset, without which revenue would be impossible, yet this asset is mainly invisible and its operational health unknown.

What are the different types of wind tower foundations?

For onshore wind turbine tower, there are basically 5 common types of wind tower foundations: the shallow mat extension, the ribbed beam basement, the underneath piled foundation, the uplift anchors and the new type. For each type, it can be both in round shape or in octagon shape. The diameter ranges from 15m to 22m.

Can a wind turbine jacket support aquaculture cages?

Jiang Junjie and others combined wind turbine jacket foundations with



aquaculture cages to conduct static and dynamic analyses of the structure under wind, wave, and current loads, verifying the feasibility of using the jacket as a support structure for aquaculture cages.

Does a WTG foundation support a multimillion-dollar asset?

The foundation supports a multimillion-dollar asset, without which revenue would be impossible, yet this asset is mainly invisible and its operational health unknown. Wind farm owners and operators are in a challenging position without information on the health of their WTG foundations.



Wind power storage foundation



Research on wind-storage coordinated frequency regulation ...

In view of the frequency problem caused by the large-scale grid connection of wind power, this chapter proposes to use energy storage and wind turbines to cooperate with ...

[WhatsApp](#)

[Wind turbine foundation and energy storage](#)

Co-locating energy storage with a wind power plant allows the uncertain, time-varying electric power output from wind turbines to be smoothed out, enabling reliable, dispatchable energy for

[WhatsApp](#)



[WINDS-STORE - DEVELOPMENT OF A WIND POWER ...](#)

The main objective of the project is to develop an integrated offshore wind power generation system. The added value resides in the use of a special concrete, as well as the energy ...

[WhatsApp](#)



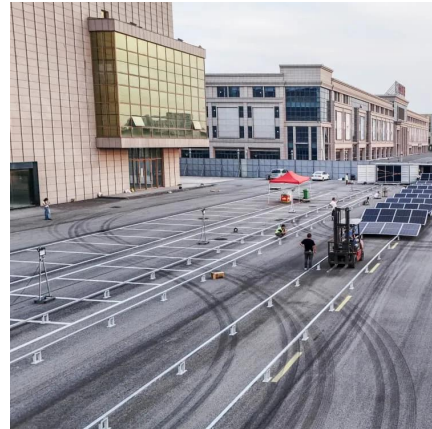
Stochastic predictive control of battery energy storage for wind ...

The limited dispatchability of wind energy poses a challenge to its increased penetration. One technically feasible solution to this challenge is



to integrate a battery energy ...

[WhatsApp](#)



The future of wind energy: Efficient energy storage for wind turbines

Research focuses on developing efficient, cost-effective storage technologies to store excess wind power and release it when needed. These advancements are crucial for ...

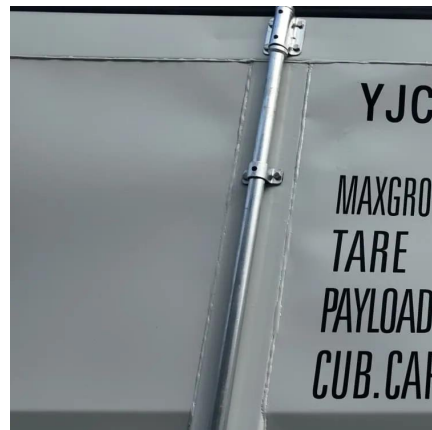
[WhatsApp](#)



Design and Analysis of a Novel offshore Gravity Energy ...

ore gravitational energy storage support structure based on the foundation of wind turbine jackets. The structure size will be determined based on the proposed design materials, ...

[WhatsApp](#)



Meralco PowerGen, KEPCO eye wind, energy storage projects

21 hours ago· Meralco PowerGen Corp. (MGEN) and Korea Electric Power Corp. (KEPCO) are looking to expand their collaboration beyond solar energy into wind and energy storage ...

[WhatsApp](#)

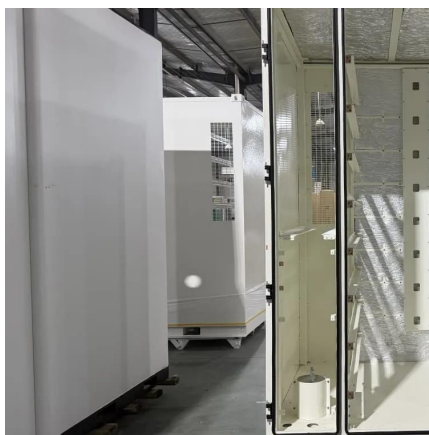




[Wind Turbine Foundation: 5 Foundation Types Explained](#)

Find out the features for 5 types of wind turbine foundations: the shallow mat extension, the ribbed beam basement, the underneath piled foundation, the uplift anchors and the new type.

[WhatsApp](#)



A comprehensive review of wind power integration and energy storage

Integrating wind power with energy storage technologies is crucial for frequency regulation in modern power systems, ensuring the reliable and cost-effective operation of ...

[WhatsApp](#)

Techno-economic assessment of offshore wind and hybrid wind...

The results indicate that, compared to the stand-alone wind energy farm, the combined wind and wave energy farm can significantly reduce the storage capacity (with ...

[WhatsApp](#)



Design and Analysis of a Novel offshore Gravity Energy ...

the foundation of wind turbine jacket structures, integrating a new gravitational energy storage system to form an integrated "wind power + storage" structure, as illustrated in Figure 1. ...

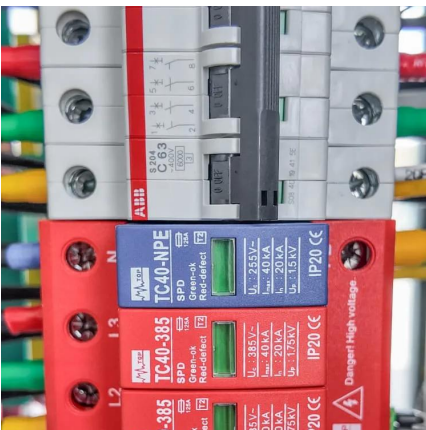
[WhatsApp](#)



Wind turbine generator foundations

Wind farm owners and operators are in a challenging position without information on the health of their WTG foundations. This whitepaper gives a better insight into the health of WTG foundations.

[WhatsApp](#)



[Power Sector, Supply Chain, Jobs, and Emissions ...](#)

This report summarizes the methods and findings of our analysis, focusing on the near- (through 2030) and long-term (through 2050) implications of deploying 30 GW offshore wind by 2030. ...

[WhatsApp](#)

Contact Us

For catalog requests, pricing, or partnerships, please visit:
<https://www.straighta.co.za>