

# Which one needs an inverter 60v or 12v





## Overview

---

What is a 12 volt inverter?

An inverter is a device that turns the power from a 12 volt DC battery, like the one in your car or truck, into the 120 volt AC power that runs all of the electronics in your house. You can use one of these devices to power all sorts of devices in your car, but it's important to figure out how big of an inverter you need first.

What size inverter do I Need?

The right size inverter for your specific application depends on how much wattage your devices require. This information is usually printed somewhere on electronic devices, although it may show voltage and amperage ratings instead.

Is a 12V or 24V inverter better?

As a result, asking if a 12V or 24V inverter is better becomes a question that cannot be answered. The reason being is each system has its own set of unique variables that makes it impossible to provide a single answer. Therefore, we find it is much more efficient to provide the answer to: Why would one choose a 12VDC, 24VDC or 48VDC power system?

.

What is a power inverter?

A power inverter is a small box-looking gadget that inverts DC power into AC power by clamping onto the terminals of a battery. You can supply power to whatever is attached to a normal cord by plugging it into the inverter. It may seem straightforward to buy one, but with that being said.

What is a 120 volt inverter?

This is referring to the nominal DC voltage that the inverter will invert to AC



voltage (i.e., 120VAC or 240VAC). There are multiple other AC supply voltages and configurations, but we will be generally referring 120VAC as it is the most widely available.

How many watts can an inverter power continuously?

It's a common misconception that an inverter advertised as being 800 watts can power devices up to that amount continuously. In reality, companies advertise their inverters based on their peak outputs, not the output they can support over the long-term.



## Which one needs an inverter 60v or 12v

---



### **Amazon : 6000W DC 12V/24V/48V/60V/72V Pure Sine Wave Inverter**

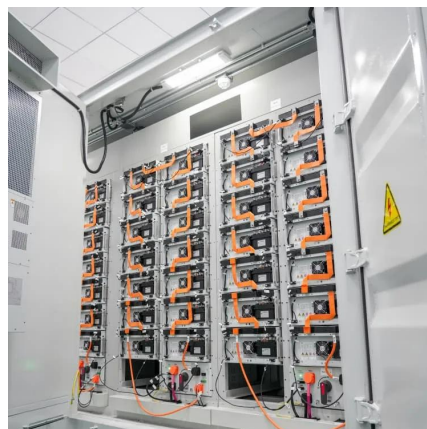
6000W DC 12V/24V/48V/60V/72V Pure Sine Wave Inverter Charger Split Phase DC Input AC Output 120V/240V Low Frequency Solar Power Inverter Converter, 60v to 220v

[WhatsApp](#)

### **Understanding Inverters and How-to Select one that is right for you**

If you are still unsure which model is right for you, feel free to call our Customer Service Department and one of our team members will gladly find the Inverter that fits your needs!

[WhatsApp](#)



### [5000W Pure Sine Wave Power Inverter 12V/24V/48V/60V/72V ...](#)

About this item ?Specification Choose?Input voltage: You can only choose one input voltage, 12V or 24V or 48V or 60V or 72V, and cannot use 12V/24V/48V/60V/72V at the same time; ...

[WhatsApp](#)



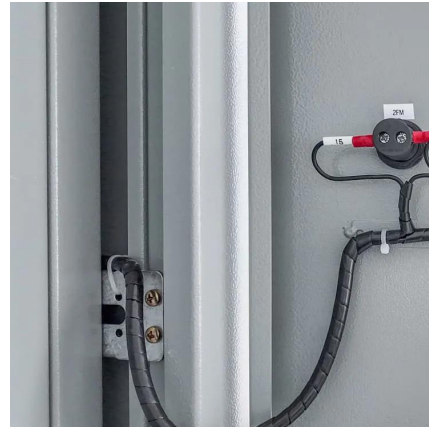
### **Understanding inverters with 60 volts on hot and neutral**

These cheap portable inverters are designed to be floating (no ground), and must remain floating, or will be damaged. You are reading 60v



to ground, because they are floating. ...

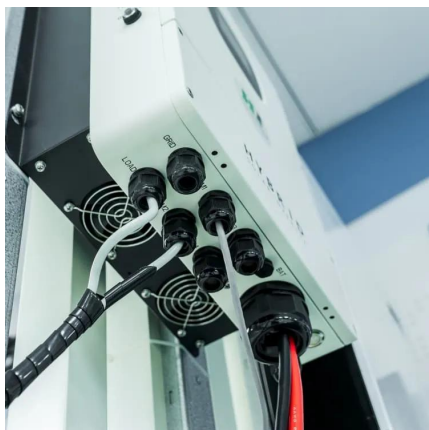
[WhatsApp](#)



### **Two 12V vs. One 24V Lithium Battery, Which One is Better?**

The Advantages of Using One 24V Lithium Battery Even though there are a few challenges, settling for one 24V battery unit instead of two 12V Lithium batteries has some ...

[WhatsApp](#)



### **12V vs 24V Inverters Key Differences and Which One is Right for ...**

Power Output and Efficiency: 12V vs 24V Inverters One of the most significant differences between 12V vs 24V inverters is their power handling capabilities and efficiency. ...

[WhatsApp](#)



### **12v or 60v Inverter. Does it Matter? , Electronics Forums**

The disadvantage is that the 12 V inverter will draw 5 times the current a 60 V inverter draws for the same output power. This current needs to be supplied by the step-down ...

[WhatsApp](#)



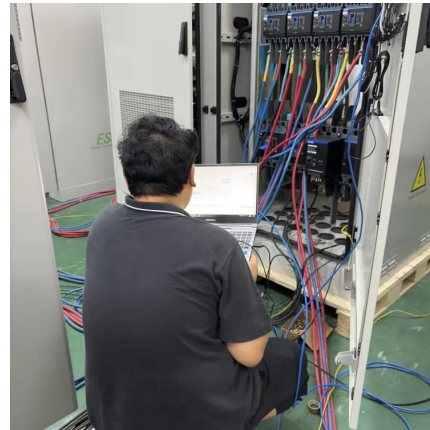




## What Size Inverter Do You Need for Your Home? - PowerGen USA

In this guide, we'll walk you through the steps to accurately calculate your home's total power demand and select an inverter that best matches your energy usage patterns and ...

[WhatsApp](#)



## Find the Right Inverter Size: How Big An Inverter Do You need?

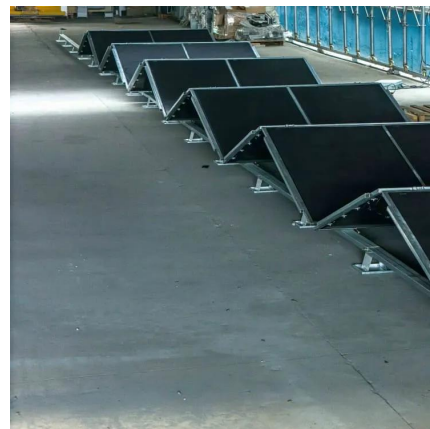
Buying an inverter isn't the most stressful purchase in the world, but there are a lot of small factors to consider for making sure the model you choose will meet ...

[WhatsApp](#)

## What Size Inverter Do You Need? A Complete Guide for Home, ...

Choosing the right inverter size is crucial--too small, and your appliances won't work; too large, and you'll waste money. This guide will help you determine the ideal inverter ...

[WhatsApp](#)



## [5000W DC 12V/24V/48V/60V/72V Pure Sine Wave Inverter ...](#)

About this item [Powerful Performance] - With 2500W continuous power output and 5000W peak power, it has high conversion efficiency (>90%), low no-load loss and more ...

[WhatsApp](#)



### [Differences Between 12V, 24V and 48V Inverter Systems](#)

Most inverters will fall into three categories for their input requirements: 12VDC, 24VDC and 48VDC. This is referring to the nominal DC voltage that the inverter will invert to AC voltage ...

[WhatsApp](#)



### [How do I choose a Power Inverter: Buyer's Guide](#)

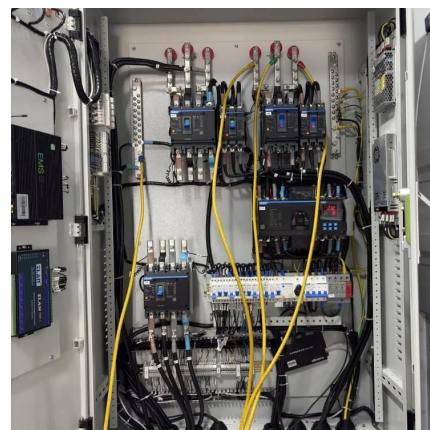
Buying an inverter isn't the most stressful purchase in the world, but there are a lot of small factors to consider for making sure the model you choose will meet your needs and applications.

[WhatsApp](#)

### **12V, 24V, or 48V Solar Power System: Which Voltage Is Best for ...**

Compare 12V, 24V, and 48V solar systems to find your perfect fit. Our guide helps you maximize efficiency and avoid costly mistakes for your unique power needs.

[WhatsApp](#)





## Contact Us

---

For catalog requests, pricing, or partnerships, please visit:  
<https://www.straighta.co.za>