

Which inverter is suitable for lithium battery





Overview

Do advanced lithium batteries need an inverter?

Special features for advanced batteries: Some advanced lithium batteries have a Battery Management System (BMS) that monitors and controls the battery. These might need an inverter that can communicate with the BMS to optimize charging and ensure safety.

How do I choose a lithium-ion battery inverter?

Lithium-ion batteries are becoming increasingly popular for use in renewable energy systems because of their high energy density and long lifespan. When choosing an inverter for a system that uses lithium-ion batteries, it's important to select an inverter that is specifically designed to work with this type of battery.

Why are lithium inverters so popular?

The battery life can be extended without the need for memory or planned cycling. As a result, lithium inverters powered by batteries are becoming more and more popular for use in electric and hybrid vehicles, laptops, and cell phones.

Which battery inverter is best?

These lithium-ion inverters powered by batteries are adaptable and have a quick charge and discharge rate. As a result, in high-stress conditions, they are the most favoured battery inverters. Extreme weather conditions are also appropriate for these inverters.

How do I choose a good battery inverter?

Ideal Power Consumption: Look for an inverter with an efficiency rating that suits your needs. Lithium batteries are more efficient than lead-acid, so you might opt for a slightly less powerful inverter to optimize efficiency. Low Battery Cutoff (LBC): These settings protect the battery from over-discharge



and over-charging.

Why do I need a lithium battery inverter?

These might need an inverter that can communicate with the BMS to optimize charging and ensure safety. As most of the inverters do not have any communication for the battery communication so these Inverters cant do any thing about the communication port of the Lithium battery. Here's how to find out for sure:



Which inverter is suitable for lithium battery



Best Inverter For Lithium Ion Battery [Updated: August 2025]

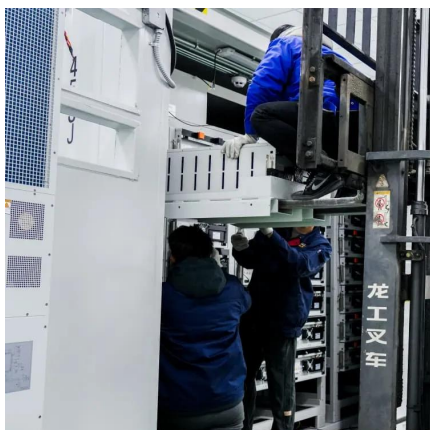
After trying out several options, I found the Dewalt 350W Battery Power Inverter with USB, Type-C, DC, and LED truly stands out. Its multiple ports and built-in safety ...

[WhatsApp](#)

[How to Choose the Right Inverter for Lithium Batteries?](#)

Answer: To choose the right inverter for lithium batteries, match the inverter's voltage and capacity to your battery's specifications, prioritize pure sine wave inverters for ...

[WhatsApp](#)



Best Inverters for Lithium Batteries: Reliable Power Solutions for ...

Whether for off-grid solar systems, RVs, or emergency backup, inverters convert battery power to usable AC electricity. Below is a comparison table summarizing top-quality ...

[WhatsApp](#)

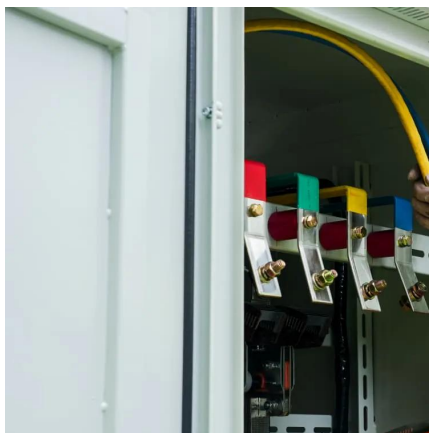
Best Batteries for Solar Inverter Systems: Top Power Storage ...

Choosing the best battery for solar inverters is essential to ensure efficient, reliable, and long-lasting solar power systems. This guide reviews



top battery-integrated solar kits and ...

[WhatsApp](#)



Best Inverters for Lithium Batteries to Power Your Off-Grid and ...

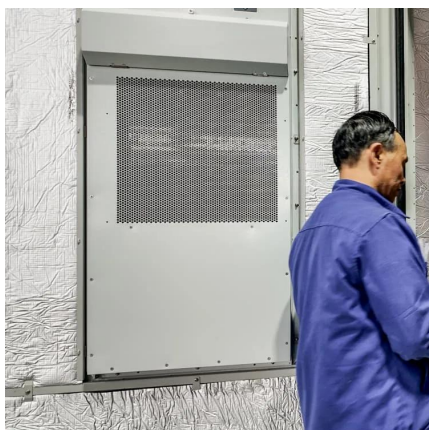
Below is a comparison table summarizing some top-rated inverters and inverter-inclusive setups that work well with lithium batteries for various applications including RVs, ...

[WhatsApp](#)

[Do Lithium Batteries Need a Special Inverter?](#)

While standard inverters can work with lithium batteries, using a dedicated inverter designed for lithium technology is recommended. This ensures compatibility with the battery's charging and ...

[WhatsApp](#)



[Which inverter is best for lithium batteries?](#)

Which inverter is best for lithium batteries? The best inverter for lithium batteries is a pure sine wave inverter designed to provide clean, stable power that protects sensitive ...

[WhatsApp](#)



[Can Lithium Batteries Work With Any Type of Inverter?](#)

For optimal performance in home energy stems, choose an inverter specifically designed for lithium battery or LiFePO4 battery systems, and always verify compatibility before ...

[WhatsApp](#)



[What Size Inverter Can I Run Off a 100Ah Battery? A ...](#)

When selecting an inverter to pair with a 100Ah battery, it's crucial to understand the power requirements of your appliances and the capabilities of your inverter. The right ...

[WhatsApp](#)

[Do You Need a Special Inverter for Lithium Batteries?](#)

In this blog, we will explore the necessity of specialized inverters for lithium batteries, aiming to equip you with the knowledge to make informed decisions about your ...

[WhatsApp](#)



Contact Us

For catalog requests, pricing, or partnerships, please visit:
<https://www.straighta.co.za>