

Which direction is the right one for a home solar panel





Overview

The best direction for solar panels is true south in the northern hemisphere, including the U.S. These orientations will allow for the most direct sunlight to hit your panels, which helps improve electricity generation and maximizes your electricity bill savings with solar. Which direction should solar panels be oriented?

The best direction for solar panels is true south in the northern hemisphere, including the U.S. These orientations will allow for the most direct sunlight to hit your panels, which helps improve electricity generation and maximizes your electricity bill savings with solar.

Why should you optimize your solar panel direction and orientation?

Optimizing your solar panel direction and orientation is one of the most impactful decisions you can make for your solar investment. The right positioning can increase your energy production by up to 30%, significantly improving your return on investment and long-term savings.

Why does solar panel orientation matter?

Why Solar Panel Orientation Matters The orientation of your solar panel—meaning the direction and tilt angle at which it is installed—determines how much sunlight it captures throughout the day. More sunlight means more power, which directly affects the efficiency and cost-effectiveness of your solar power system.

Should a solar panel be east or west facing?

If a true south orientation isn't possible, east- or west-facing panels can still produce good results, especially when energy needs are higher in the morning or evening. However, efficiency may drop by about 15% compared to south-facing installations. **Tilt Angle: How Steep Should Your Solar Panel Be?**

.



Which panel direction should I Choose?

Panel directions and the type of households they generally best suit are given below: North Orientation: Panels that face north produce the most electricity overall and can be the best choice for people who are at home during the day.

What is solar panel positioning?

Before diving into specific recommendations, it's essential to understand the key concepts that govern solar panel positioning. Orientation refers to the cardinal direction your solar panels face (north, south, east, or west), also known as the azimuth angle.



Which direction is the right one for a home solar panel



[Solar Panel Direction & Orientation: 2025 Complete Guide](#)

Discover the optimal direction and angle for solar panels to maximize energy output. Complete guide with calculations, tools, and location-specific recommendations for 2025.

[WhatsApp](#)

[Best Angle & Orientation For Solar Panels](#)

Why Angle & Orientation Matters Buying the right solar panel system for your property means you'll outlay the minimum amount of cash for maximum return in terms of electricity generated. ...

[WhatsApp](#)



What Is the Perfect Direction for Solar Panels? - AHODSOLAR

When installing a solar panel system, one of the most important factors to consider is the direction in which the panels face. The orientation of solar panels directly impacts their ...

[WhatsApp](#)



Optimal Solar Panel Angle: Maximizing Efficiency and Energy ...

To maximize solar savings, tilt your panels to match your home's latitude. This angle, usually between 30 and 45 degrees, ensures your solar



panels catch the most sunlight ...

[WhatsApp](#)



[Which Solar Panel Direction \(Orientation\) Is Best?](#)

Panel directions and the type of households they generally best suit are given below: North Orientation: Panels that face north produce the most electricity overall and can ...

[WhatsApp](#)



What Is the Best Direction for Solar Panels? , EcoFlow US

While the tilt angle of your solar panel certainly plays a role in electricity output, it's essential that your array faces the right direction. For the best results, you should prioritize solar panel ...

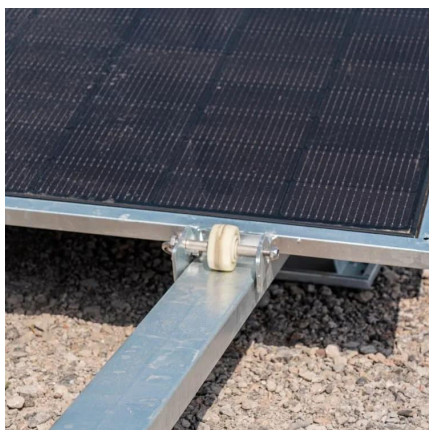
[WhatsApp](#)



Best Direction for Solar Panels to Maximize Savings -- ...

The best direction for solar panels is true south in the northern hemisphere, including the U.S. These orientations will allow for the most direct sunlight to hit your panels, which helps ...

[WhatsApp](#)





Optimal Orientation for Solar Panels: Landscape vs. Portrait

Optimal Orientation for Solar Panels: Landscape vs. Portrait Solar energy adoption is on the rise, with individuals and businesses increasingly investing in photovoltaic systems. However, a ...

[WhatsApp](#)



Contact Us

For catalog requests, pricing, or partnerships, please visit:
<https://www.straighta.co.za>