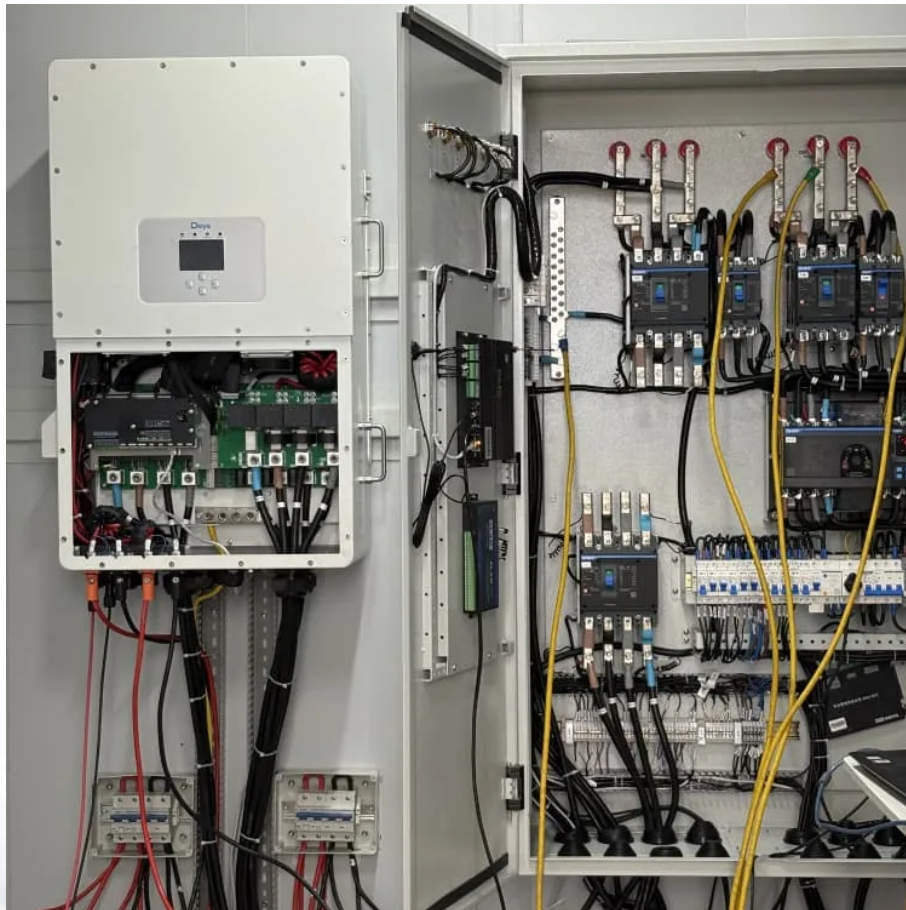


Which communication base station in Belarus has the most wind power





Overview

Until the year 2010, individual units already operated in the Minsk and Grodno regions. By 2017, the largest of the wind energy facilities is Navahrudak wind park, which belongs to the RUE branch «Grodnoenergo» Lida energy networks. The first wind generator appeared here near the village Hrabnyky in 2011.

Wind power in Belarus is a form of , which with , is one of the most important sector of , but remains underutilized as of 2021. As of.

In a September 2022 article, the (UNDP) highlighted the country's efforts to prioritize technologies in its energy mix to.

The country has already identified 1640 points where it is possible to install wind power plants, although the wind speed over the territory of Belarus is on average no more than 3.5–5 m/s, and for the economic benefit of wind turbines it should reach 7–12 m/s.



Which communication base station in Belarus has the most wind po



Multi-objective interval planning for 5G base station virtual ...

As an emerging load, 5G base stations belong to typical distributed resources [7]. The in-depth development of flexi-bility resources for 5G base stations, including their internal energy ...

[WhatsApp](#)

The Role of Hybrid Energy Systems in Powering Telecom Base Stations

Powering telecom base stations has long been a critical challenge, especially in remote areas or regions with unreliable grid connections. Telecom operators need continuous, ...

[WhatsApp](#)



Belarus Power Plants

Mazy`rskaya CZE`CZ-24 Mazyr Power Plant 205 MW gas combustion Q4299676 Babrujskaya CZE`CZ-2 Bobruysk-2 Power Plant 183 MW gas combustion Q112112799 Grodzenskaya CZE`CZ-2 181 MW ...

[WhatsApp](#)

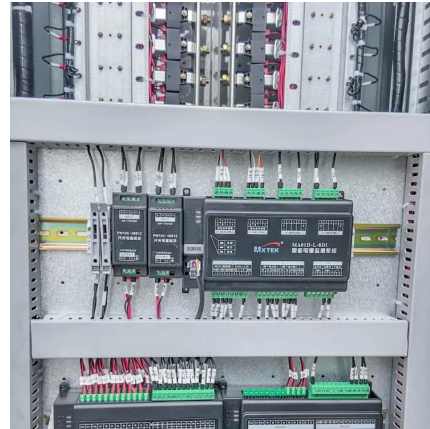
Velcom launched the first base station in Belarus for solar energy

Our partner, velcom mobile operator, has built the first base station in Belarus for solar energy. The unique tower has earned without external



sources of electricity in the ...

[WhatsApp](#)



[\(PDF\) Small windturbines for telecom base stations](#)

Every off-grid base station has a diesel generator up to 4 kW to provide electricity for the electronic equipment involved. The presentation will give attention to the requirements ...

[WhatsApp](#)



Wind-Solar Hybrid Power Technology for Communication Base Station

Wind-solar hybrid power system based on the wind energy and solar energy is an ideal and clean solution for the power supply of communication base station, especially for those located at ...

[WhatsApp](#)



Contact Us

For catalog requests, pricing, or partnerships, please visit:
<https://www.straighta.co.za>