

Which board is better for Huawei base station power supply





Overview

The power supply is designed to be inserted into a slot/backplane and hence all connections to the power supply is by means of a edge connector. Inclusion of Pre-charge pins allow multiple units to be parallel.

What is a Huawei base station?

Let's dive into a technical explanation. A base station, also known as an eNodeB (for 4G LTE) or gNodeB (for 5G NR) in Huawei's terminology, is a piece of equipment that facilitates wireless communication between user equipment (UE) like smartphones, tablets, and IoT devices, and the core network of the telecommunications provider.

What systems does Huawei offer?

Huawei provides comprehensive management and control systems, such as Huawei's U2000 or Huawei's Cloud BTS. These systems enable operators to monitor, configure, and manage base stations remotely, ensuring optimal network performance and reliability.

What is a base station Power Supply Unit (PSU)?

Power Supply Unit (PSU): This provides the necessary electrical power to operate the base station components. It ensures that all parts of the base station have a consistent and reliable power source. Backhaul Interface: This is the connection between the base station and the core network.

How much power does a 5G base station use?

Each nation has a different 5G strategy. For 5G, China uses 3.5GHz as the frequency. Then, a 5G base station resembles a 4G system, but it's on a much larger scale. For sub-6GHz in 5G, let's say you have a macro base station. The power levels at the antenna range from 40 watts, 80 watts or 100 watts.

How does a base station work?

A base station itself consists of two separate systems, the building baseband unit (BBU) and the remote radio head (RRH). The BBU, which is situated on the



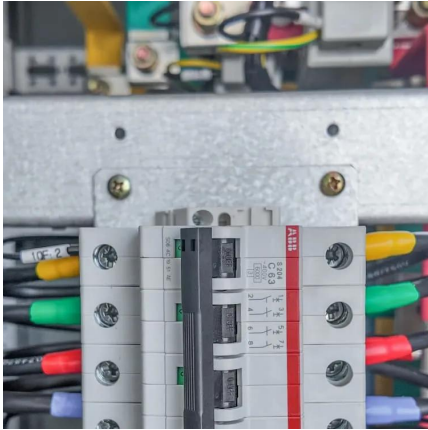
ground, handles the RF processing functions. It serves as the interface between the base station and the core network.

What is a base station antenna system?

Antenna System: At the heart of a base station is the antenna system. This system radiates and receives radio frequency (RF) signals to and from mobile devices.



Which board is better for Huawei base station power supply



Selecting the Right Supplies for Powering 5G Base Stations

These tools simplify the task of selecting the right power management solutions for these devices and, thereby, provide an optimal power solution for 5G base stations components.

[WhatsApp](#)

Power Supply Solutions for Wireless Base Stations Applications

CONTENT: Telecommunications Systems
Overview The Components of a Wireless Base System
The Challenges of Powering Wireless Base Stations
MORNSUN's Power Supply Solutions ...

[WhatsApp](#)



Huawei RRU3928 1800MHz radio base station teardown (part 1 ...

Good power supply layout with a lot of transient protection at the input. A single full-bridge of PSMN4R8-100BSE 100V MOSFETs is used for first stage voltage stabilization before ...

[WhatsApp](#)

Reliable bbu power supply Solutions for Efficient Power ...

Enhance energy efficiency with high-performance bbu power supply. Designed for reliability and versatility, they offer optimal



power management for various applications.

[WhatsApp](#)



Selecting the Right Supplies for Powering 5G Base Stations

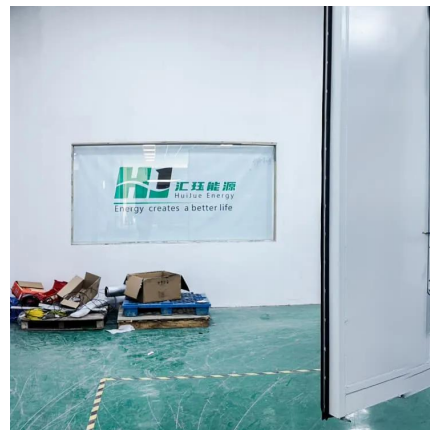
These tools simplify the task of selecting the right power management solutions for these devices and, thereby, provide an optimal power solution for 5G base stations components.

[WhatsApp](#)

[Huawei Releases New-Generation 5G-oriented Base Station](#)

At the 2017 Global Mobile Broadband Forum in London, Huawei, the world's leading global information and communications technology (ICT) solutions provider, released a ...

[WhatsApp](#)



[HUAWEI BTS3 SERIES HARDWARE DESCRIPTION MANUAL ...](#)

View and Download Huawei BTS3 Series hardware description manual online. M900/M1800 Base Transceiver Station. BTS3 Series transceiver pdf manual download. Also for: Bts30, Bts312, ...

[WhatsApp](#)





[How 3 stars are making life better around the world](#)

In one of its first deployment cases in 2017, Huawei changed all this with RuralStar. Equipped with RRN non-line-of-site (NLOS) backhaul technology, the solution enables up to three relay hops ...

[WhatsApp](#)



[DBS5900 Distributed Base Stations -- Huawei Enterprise](#)

The DBS5900 can meet the needs of industry users for wireless broadband access and multimedia critical communication, and obtain better coverage and user experience. The ...

[WhatsApp](#)

[3900 Series Base Station Configuration Principles](#)

3900 series base stations, which use baseband units (BBUs) and RF modules as the main devices, adopt the industry-leading modular design to support multiple RATs and application ...

[WhatsApp](#)



BTS3012AE Base Station System Description PDF , PDF , Power Supply

An overview of the key benefits of the BTS3012AE including its coverage, capacity, networking capabilities, power supply system, and environmental adaptability.

[WhatsApp](#)



[Huawei Digital Power 2023 Sustainability Report](#)

Huawei Digital Power is a world leader in digital power products and solutions. We are committed to integrating digital and power electronics technologies, developing clean power, and ...

[WhatsApp](#)



Contact Us

For catalog requests, pricing, or partnerships, please visit:
<https://www.straighta.co.za>