

# **Which battery should I use for a 12v 60A inverter**





## Overview

---

To recharge your battery from time to time you would need the right size solar panel to do the job! Read the below article to find out the suitable solar panel size for your battery bank .

Note!The battery size will be based on running your inverter at its full capacity  
Assumptions 1. Modified sine wave inverter efficiency: 85% 2. Pure sine wave inverter efficiency:90% 3. Lithium Battery:100% Depth of discharge limit 4. lead-acid.

To calculate the battery capacity for your inverter use this formula Inverter capacity (W)\*Runtime (hrs)/solar system voltage = Battery Size\*1.15 Multiply the result by 2 for lead-acid type.

You would need around 24v150Ah Lithium or 24v 300Ah Lead-acid Batteryto run a 3000-watt inverter for 1 hour at its full capacity .

Here's a battery size chart for any size inverter with 1 hour of load runtime  
Note! The input voltage of the inverter should match the battery voltage. (For example 12v battery for 12v.

Deep-cycle batteries work best for your sine wave inverters. Here's why: They can get discharged and recharged multiple times and produce steady power over an extended period. Deep-cycle batteries have low internal resistance.How many 12V batteries do I Need?

If the battery is rated 100 DC Amp-hours, you need four 12V batteries to run these devices for two hours. Now that you have all the info on battery options and calculating the inverter and battery sizes, you are ready to go ahead and get your power back system done.

What voltage should a 12V inverter run on?

The input voltage of the inverter should match the battery voltage. (For example 12v battery for 12v inverter, 24v battery for 24v inverter and 48v battery for 48v inverter Summary What Will An Inverter Run & For How Long?

.



Which battery is best for an RV inverter?

For RVs or off-grid homes, the Renogy 12-V deep cycle inverter battery is one of the best acid-lead batteries for inverter use. It can power your RV's appliances and even help restart your RV engine.

What is the recommended battery size for an inverter?

Interpreting Results: Once you input the required data, the calculator will generate the recommended battery size in ampere-hours (Ah). For instance, if your power consumption is 500 watts, the usage time is 4 hours, and the inverter efficiency is 90%, the calculator might suggest a battery size of approximately 222 Ah.

Are all batteries compatible with all inverters?

However, not all batteries are compatible with all inverters. To ensure a seamless and efficient operation, it's important to choose a battery that is well-suited for your specific power inverter. Before selecting a battery, it's essential to have a good understanding of your power inverter.

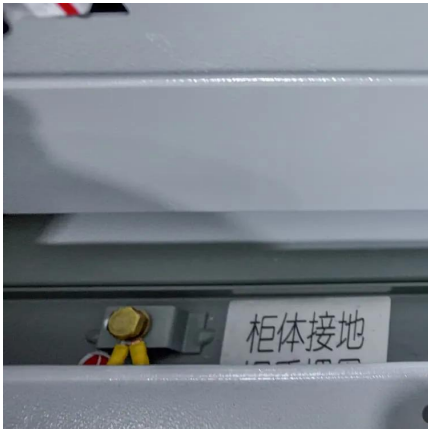
Do inverters need batteries?

For most residential and small commercial setups, the traditional battery and power inverter combo is the preferred choice to ensure continuous power supply during blackouts. So, while some inverter types do not require batteries, if your priority is uninterrupted backup power, investing in a quality battery in inverter system is essential.



## Which battery should I use for a 12v 60A inverter

---



### [What Size Charge Controller Do I Need?](#)

Selecting the right size of solar charge controller is crucial for your solar system's efficiency and battery protection. But how do you know what size charge controller do you need? In this blog ...

[WhatsApp](#)

### **What gauge solar wire do I need for 60 amps MPPT controller**

If you are talking MPPT to battery, you'll max out the controller @ 60A. You could use 2 AWG wire if you keep the run short ( [WhatsApp](#) )



### [Batteries For Inverters \(Complete Guide\)](#)

Whether you own an RV or your home is off-grid, the Renogy 12-V deep cycle inverter battery is one of the best acid-lead batteries for inverter use on the market. It can not only power your ...

[WhatsApp](#)

### **What Will An Inverter Run & For How Long? (With Calculator)**

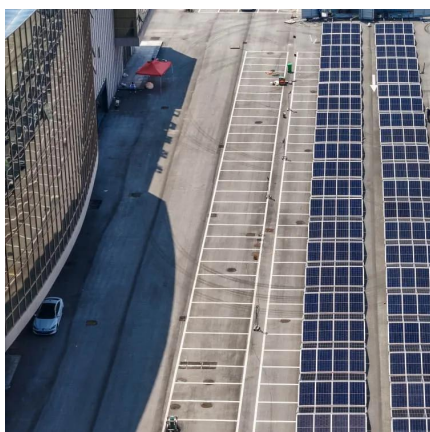
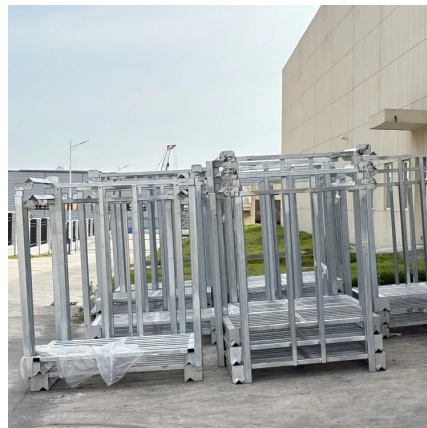
How long will a 12v battery last with an inverter? The next question which comes to mind that how long my inverter will last on load with a 12, 24,





or 48v battery.

[WhatsApp](#)



### [How to Calculate Battery Size for Inverters of Any Size](#)

To find the best battery now that you've learned using our inverter battery bank calculator, shop our selection of batteries for your power inverter. If you'd like to learn how to hook up your ...

[WhatsApp](#)

### **Ultimate Guide to Battery in Inverter: Choose & Maintain Right**

Discover how to choose, maintain, and maximize your battery in inverter for reliable backup power. Expert tips on inverter batteries, lifespan, and safety included!

[WhatsApp](#)



### [Which Inverter Battery Is Best \(Calculated Options\)](#)

Which Battery Would Be Best Suited For An Inverter? There is no single correct answer to this question as it depends on the factors you need to consider about your specific ...

[WhatsApp](#)





### [The Ultimate Guide to Choose Batteries for Inverter](#)

Lithium-ion batteries offer versatility and durability, making them a standout choice. They excel in both off-grid and grid-tie setups due to their high energy density and ...

[WhatsApp](#)



### [What Type of Battery Should I Use for My Inverter?](#)

What type of battery works best for inverters? Deep-cycle batteries work best for your sine wave inverters. Here's why: They can get discharged and recharged multiple times ...

[WhatsApp](#)

### **Calculate Battery Size For Any Size Inverter (Using Our Calculator)**

To recharge your battery from time to time you would need the right size solar panel to do the job! Read the below article to find out the suitable solar panel size for your battery bank

[WhatsApp](#)



### **Breaker Sizing for Inverter Output , Information by Electrical**

For example, a SolarEdge 10kW inverter has an output of 42A at 240V. Since the continuous output of the inverter is limited to 42A, could I use a 45A or 50A OCPD? Or do I ...

[WhatsApp](#)



### [Amp Breaker vs Fuse: Best Choice for Lithium Batteries](#)

Amp breaker vs fuse is a common question when it comes to lithium battery protection. If you're setting up a lithium battery system for your camper, solar setup, or boat, ...

[WhatsApp](#)



## Contact Us

---

For catalog requests, pricing, or partnerships, please visit:  
<https://www.straighta.co.za>