

When does the grid-connected inverter have output





Overview

A grid-tie inverter works by examining the output of the solar panels it's attached to and connecting its feed into the grid. The most common method is to increase the loading to the panel lightly and to measure the power received from it. If the measure improves, then the loading is improved. If the measure weakens.

Home solar systems are growing legitimately as residential home energy resolution. Many methods use photovoltaic solar modules that convert the light energy of the sun into.

Grid-tied inverters are the critical element in a grid-tied renewable power system. They're most widely used in Photovoltaic systems. A photovoltaic solar system is the most efficient and popular form of renewable power. The term grid-tied means that the.

Solar panels produce direct current power. DC electricity is generated by electrons moving in one charge from negative to positive. It's mainly used in primary applications involving.

In recent years, the concept of going "off-grid" has become famous for two different reasons: 1. Fear of a natural or manmade catastrophe that would shut down the electrical grid, 2. And the importance of companies and individuals in environmentally.

Grid-tie inverters convert DC electrical power into AC power suitable for injecting into the electric utility company grid. The grid tie inverter (GTI) must match the phase of the grid and maintain the output voltage slightly higher than the grid voltage at any instant. A high-quality modern grid-tie inverter has a fixed unity , which means its output voltage and current are perfectly lined up, and its phase angle is within 1° of the AC power grid. The inverter has an internal com.

What is a grid on inverter?

An on grid inverter is a device that converts DC electricity from solar panels into AC electricity, which is compatible with the electrical grid. Unlike off-grid inverters, which operate independently from the grid and require battery



storage, grid on inverters work in conjunction with the grid.

How PV Grid connected inverter works?

Before the pv grid connected inverter is connected to the grid for power generation, it needs to take power from the grid, detect the parameters such as voltage, frequency, phase sequence, etc. of the grid power transmission, and then adjust the parameters of its own power generation to be synchronized with the grid electrical parameters.

Do you need a grid tied inverter?

Grid-tied inverters supply power to the home when required, supporting any excess energy into the grid. They include advanced detection devices which ensure they shut down when a grid outage is detected or when business workers require to work on the grid. As you can see, an inverter is necessary if any or all your power comes from solar panels.

How does a grid forming inverter work?

Grid-forming inverters can start up a grid if it goes down—a process known as black start. Traditional “grid-following” inverters require an outside signal from the electrical grid to determine when the switching will occur in order to produce a sine wave that can be injected into the power grid.

How does a solar inverter synchronize with the grid?

Inverters convert the direct current (DC) generated by your solar panels into alternating current (AC) that can be used in your home. But that’s not all. Crucially for this discussion, inverters also synchronize this energy with the grid, which is why understanding ‘how does a solar inverter synchronize with grid’ is so important.

What is an on-grid inverter?

This article delves into the basics, working principle, and function of on-grid inverters, highlighting their significance in modern solar power systems. An on grid inverter is a device that converts DC electricity from solar panels into AC electricity, which is compatible with the electrical grid.



When does the grid-connected inverter have output



(PDF) A Comprehensive Review on Grid Connected Photovoltaic Inverters

This review article presents a comprehensive review on the grid-connected PV systems. A wide spectrum of different classifications and configurations of grid-connected ...

[WhatsApp](#)

How exactly does grid-tied hybrid inverter detect loss of grid?

If it is actually attached to the grid, the frequency will not budge but the inverter power output will increase sharply. If frequency does increase, it knows it's no longer ...

[WhatsApp](#)



[On Grid Inverter: Basics, Working Principle and Function](#)

When the output power required by the grid tie pv inverter is reached, the inverter starts to run automatically. After entering into operation, the inverter will monitor the output of ...

[WhatsApp](#)



A comprehensive review on inverter topologies and control strategies

The requirements for the grid-connected inverter include; low total harmonic distortion of the currents injected into the grid, maximum power



point tracking, high efficiency, ...

[WhatsApp](#)



How A Solar Inverter Synchronizes With The Grid: Complete Guide

Grid-tied inverters supply power to the home when required, supporting any excess energy into the grid. They include advanced detection devices which ensure they shut down when a grid ...

[WhatsApp](#)



Difference Between Grid-Tied PV Inverter And Regular Inverter

Grid-tied PV inverters connect your home and supplement the electrical grid in case of surplus power generation. The inverter delivers power to your home appliances ...

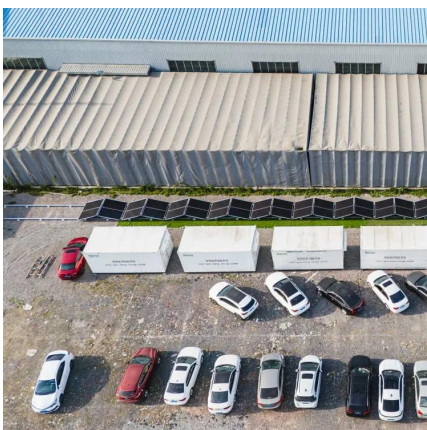
[WhatsApp](#)



Harmonics in Photovoltaic Inverters & Mitigation Techniques

These power electronic devices are called inverters. Inverters are mainly used to convert direct current into alternating current & act as interface between renewable energy & grid. Inverter ...

[WhatsApp](#)





[How Does a Solar Inverter Synchronize with Grid? A...](#)

A solar inverter synchronizes with the grid by matching the frequency, voltage, and phase of grid-associated electrical waveforms. It does this through a complex process of real ...

[WhatsApp](#)



Inverters for Wind Energy System

Grid-connected inverters also frequently contain LCD displays that provide information on the input voltage (the voltage of the electricity from the turbine) and the output voltage (the voltage ...

[WhatsApp](#)

Grid-tie inverter

OverviewOperationPayment for injected powerTypesDatasheetsExternal links

Grid-tie inverters convert DC electrical power into AC power suitable for injecting into the electric utility company grid. The grid tie inverter (GTI) must match the phase of the grid and maintain the output voltage slightly higher than the grid voltage at any instant. A high-quality modern grid-tie inverter has a fixed unity power factor, which means its output voltage and current are perfectly lined up, and its phase angle is within 1° of the AC power grid. The inverter has an internal com...

[WhatsApp](#)



[Understanding Grid Tie Solar Inverters, Working and Use](#)

The grid-connected inverter transforms the DC



electricity into alternating current (AC) electricity before sending it to the grid via the wiring. The utility company provides the net ...

[WhatsApp](#)

[Grid and Off-Grid Neutrals bonded to same ground](#)

Hi. I'm thinking about changing my current grid-tied system to a Hybrid All-in-one for backup purposes. I have 230v (European) single phase AC. My question is this: Would it be ...

[WhatsApp](#)



[Solar Integration: Inverters and Grid Services Basics](#)

In order to provide grid services, inverters need to have sources of power that they can control. This could be either generation, such as a solar panel that is currently producing electricity, or ...

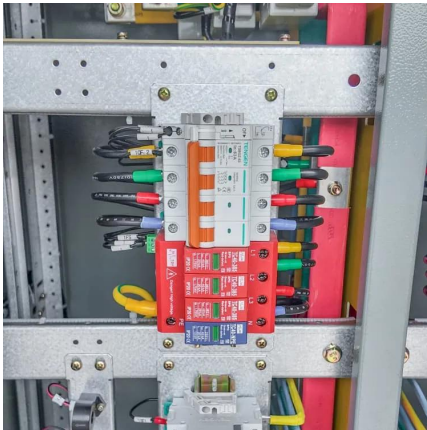
[WhatsApp](#)

[How to Read Solar On Grid Inverter Data Sheet?](#)

Overall, the rated output voltage of an on-grid inverter is a fundamental parameter that influences its compatibility, performance, and reliability within the grid-connected solar ...

[WhatsApp](#)





[How Power Inverter Generates Reactive Power](#)

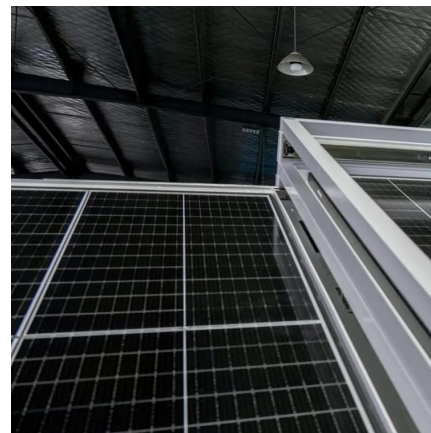
In grid-connected systems, power inverters play a key role in grid stability by either generating or absorbing reactive power as needed. By supplying reactive power, the inverter ...

[WhatsApp](#)

[Understanding Solar Inverter Grid Synchronization](#)

Grid synchronization in solar energy is the process of aligning a solar inverter's output with the grid's voltage, frequency, and phase, enabling safe and efficient power transfer.

[WhatsApp](#)



[How does an inverter synchronise to a generator?](#)

It can also suck power from grid or generator to charge battery. AC coupling allows a PV grid tied inverter connected in parallel with hybrid inverter output to push power into AC ...

[WhatsApp](#)

Contact Us

For catalog requests, pricing, or partnerships, please visit:
<https://www.straightta.co.za>