

What voltage should the inverter be connected to





Overview

Most power inverters are designed to work with a specific input voltage, such as 12V or 24V. You need to ensure that the input voltage of the inverter matches the voltage of your power source, such as a car battery or solar panel system. What factors should you consider when choosing a power inverter?

Another crucial factor to consider is the input voltage of the inverter. Most power inverters are designed to work with a specific input voltage, such as 12V or 24V. You need to ensure that the input voltage of the inverter matches the voltage of your power source, such as a car battery or solar panel system.

How to use a power inverter properly?

This article will give you some tips how to use the power inverter properly. 1. The DC input voltage of the inverter should be the same as the battery voltage. Every inverter has a value that can be connected to the DC voltage, such as 12 Volts and 24 Volts. The battery voltage should be the same as the DC input voltage of the power inverter.

What should the DC input voltage of a power inverter be?

The DC input voltage of the inverter should be the same as the battery voltage. Every inverter has a value that can be connected to the DC voltage, such as 12 Volts and 24 Volts. The battery voltage should be the same as the DC input voltage of the power inverter. 2.

Do power inverters work with 12v or 24V?

Most power inverters are designed to work with a specific input voltage, such as 12V or 24V. You need to ensure that the input voltage of the inverter matches the voltage of your power source, such as a car battery or solar panel system. Using an inverter with the wrong input voltage can damage your devices and pose safety risks.

What voltage does an inverter use?



In different countries, the applicable AC voltage is different, and most countries use 110v, 120v output inverter voltage. You can confirm on the search engine or see how much AC voltage the home appliance label uses. How can the quality of inverter output voltage be measured?

.

Why is inverter voltage important?

In the realm of power electronics, the inverter voltage is a critical parameter that dictates its performance, compatibility, and safety. Understanding the intricacies of inverter voltage is essential for anyone seeking a reliable and efficient power supply.



What voltage should the inverter be connected to



The Ultimate Guide to Wiring a Power Inverter: Step-by-Step ...

You need to ensure that the input voltage of the inverter matches the voltage of your power source, such as a car battery or solar panel system. Using an inverter with the wrong input ...

[WhatsApp](#)

[Step-by-Step Guide to Inverter Wiring for Home](#)

Connecting the inverter to the main electrical panel involves transferring power from the inverter to power the appliances and devices in your home. Properly sized wires should be used to ...

[WhatsApp](#)



Neutral Grounding at Inverter , Information by Electrical ...

In a discussion on another Forum. Inverter being supplied with 230 volts no Neutral but EG wire. Outputting 115/230 vac as a transformer might with a center tap to source ...

[WhatsApp](#)



[SolarEdge Inverter Installation Guide](#) [MAN-01-00133-1.0](#)

The inverter may be connected to the SolarEdge monitoring portal via LAN or via an external modem connected to the inverter RS232



connector. Alternatively, you can connect the inverter ...

[WhatsApp](#)



When choosing an inverter, what voltage ratings should you pay

Typically, residential inverters have a maximum input voltage between 500V and 1000V. Choosing one with a higher rating ensures greater flexibility and better performance in different ...

[WhatsApp](#)



[Battery To Inverter Wire Size Calculator: What Size](#)

What size wire from the battery to inverter?
When sizing the wire between your battery and the inverter, you'll need to ensure 2 things: The ampacity of the wire you'll be using ...

[WhatsApp](#)



How to Install and Wire an Inverter: A Step-by-Step Wiring ...

Properly connecting the DC input, AC output, and grounding will ensure efficient and reliable power conversion from the battery to the AC power supply. By following these guidelines, you ...

[WhatsApp](#)

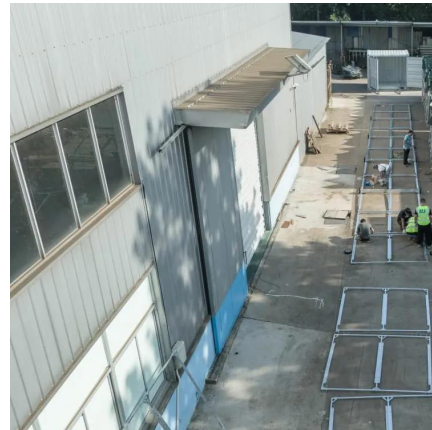




Frequently Asked Questions About Power Inverters , DonRowe

If the appliance label states that the charger or adapter produces a low-voltage DC or AC output (30 volts or less), there should be no problem powering that charger or adapter.

[WhatsApp](#)



Contact Us

For catalog requests, pricing, or partnerships, please visit:
<https://www.straighta.co.za>