

What types of power supply does 5G communication base station include





Overview

What is a 5G power supply?

The equipment ensures that devices across the infrastructure stack receive reliable power from the mains network, wherever they happen to reside. With it, individuals and organizations can continue to render services to both themselves and their customers. Overview The 5G network architecture uses multiple types of power supplies.

What are 5G infrastructure power supply considerations?

While the overall power draw is often lower, 5G equipment has narrower tolerances. It often needs multiple, precise voltages to operate correctly, with scarce leeway on either side. In the following section, we discuss 5G infrastructure power supply considerations in more detail. 5G delivers coverage to an area in a different way from 4G.

Do 5G equipment power supply units need to be compact?

Small cells will need to be able to fit in compact environments, such as traffic lights, utility poles, and rooftops. So power supply units will need to be compact, able to fit comfortably alongside the equipment they power. There are also considerable heat dissipation issues that 5G equipment power supply units will need to accommodate.

Do 5G small cells need a power supply?

Experts widely believe that 5G small cells need to be able to continue running in the event of electrical anomalies. Pairing them with integrated power supply devices costs more, but it also protects small cells if there are dramatic changes in voltage.

What is a 5G backhaul power supply?

The backhaul part of the 5G network connects the access interface - including masts, eNodeB, and cell site gateway - to the mobile core and internet



beyond. And just like the access equipment, it too has specific power supply requirements. Backhaul power supplies must cater to aggregation routers and core routers.

Should a 5G power amplifier be combined with a power amplifier?

For 5G, infrastructure OEMs are considering combining the radio, power amplifier and associated signal processing circuits with the passive antenna array in active antenna units (AAU). While AAUs improve performance and simplify installation, they also require the power supply to share a heatsink with the power amplifier for cooling.



What types of power supply does 5G communication base station in



ADI Technical Article: Choosing the Right Power Supply to Power 5G Base

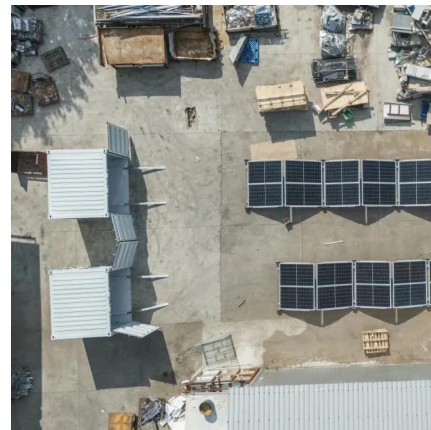
In addition, these 5G cells will also contain more integrated antennas to apply massive multiple-input, multiple-output (MIMO) technology for reliable connectivity. Therefore, a variety of state ...

[WhatsApp](#)

Selecting the Right Supplies for Powering 5G Base Stations ...

As a result, a variety of state-of-the-art power supplies are required to power 5G base station components. Modern FPGAs and processors are built using advanced nanometer processes ...

[WhatsApp](#)



Multi-objective cooperative optimization of communication base station

Recently, 5G communication base stations have steadily evolved into a key developing load in the distribution network. During the operation process, scientific dispatching ...

[WhatsApp](#)

[Power Consumption Modeling of 5G Multi-Carrier Base ...](#)

However, there is still a need to understand the power consumption behavior of state-of-the-art base station architectures, such as multi-carrier



active antenna units (AAUs), as well as the ...

[WhatsApp](#)



ADI Technical Article: Choosing the Right Power Supply to Power ...

In addition, these 5G cells will also contain more integrated antennas to apply massive multiple-input, multiple-output (MIMO) technology for reliable connectivity. Therefore, a variety of state ...

[WhatsApp](#)



[Power Supply for 5G Infrastructure, Renesas](#)

Global demand for high-speed, reliable connectivity continues to surge as 5G networks expand rapidly, with connections projected to reach billions. Managing power in 5G networks is ...

[WhatsApp](#)



The power supply design considerations for 5G base stations

In 2G, 3G and 4G, the PA and PSU were separate components, each with its own heatsink. For 5G, infrastructure OEMs are considering combining the radio, power amplifier ...

[WhatsApp](#)





Selecting the Right Supplies for Powering 5G Base Stations

Additionally, these 5G cells will also include more integrated antennas to apply the massive multiple input, multiple output (MIMO) techniques for reliable connections. As a result, a ...

[WhatsApp](#)



[Building a Better -48 VDC Power Supply for 5G and Next](#)

Figure 3. A power supply for a 5G macro base station block diagram. Highlighted ICs The MAX15258 is a high voltage multiphase boost controller with an I²C digital interface designed ...

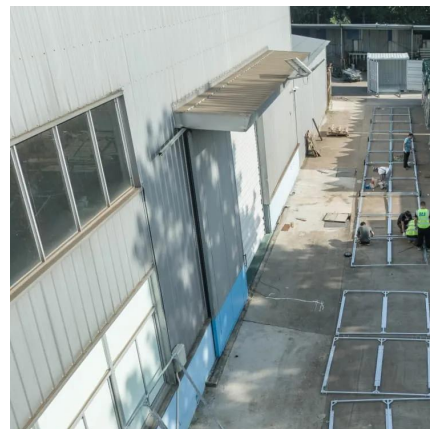
[WhatsApp](#)



[Study on Power Feeding System for 5G Network](#)

HVDC systems are mainly used in telecommunication rooms and data centers, not in the Base station. With the increase of power density and voltage drops on the power transmission line in ...

[WhatsApp](#)



Selecting the Right Supplies for Powering 5G Base Stations

Additionally, these 5G cells will also include more integrated antennas to apply the massive multiple input, multiple output (MIMO) techniques for reliable connections. As a result, a ...

[WhatsApp](#)



5G infrastructure power supply design considerations (Part I)

The 5G network architecture uses multiple types of power supplies. Requirements include units that work indoors and outdoors, offer surge protection, provide step changes in ...

[WhatsApp](#)



5G infrastructure power supply design considerations (Part I)

Renesas' 5G power supply system addresses these needs and is compatible with the -48V Telecom standard, providing optimal performance, reduced energy consumption, and robust ...

[WhatsApp](#)

5G Base Station Chips: Driving Future Connectivity by 2025

The evolution of wireless technology has brought the world to the brink of a connectivity revolution. As 5G networks become the backbone of modern communication, 5G ...

[WhatsApp](#)





(PDF) Dispatching strategy of base station backup power supply

With the mass construction of 5G base stations, the backup batteries of base stations remain idle for most of the time. It is necessary to explore these massive 5G base ...

[WhatsApp](#)

Contact Us

For catalog requests, pricing, or partnerships, please visit:
<https://www.straighta.co.za>