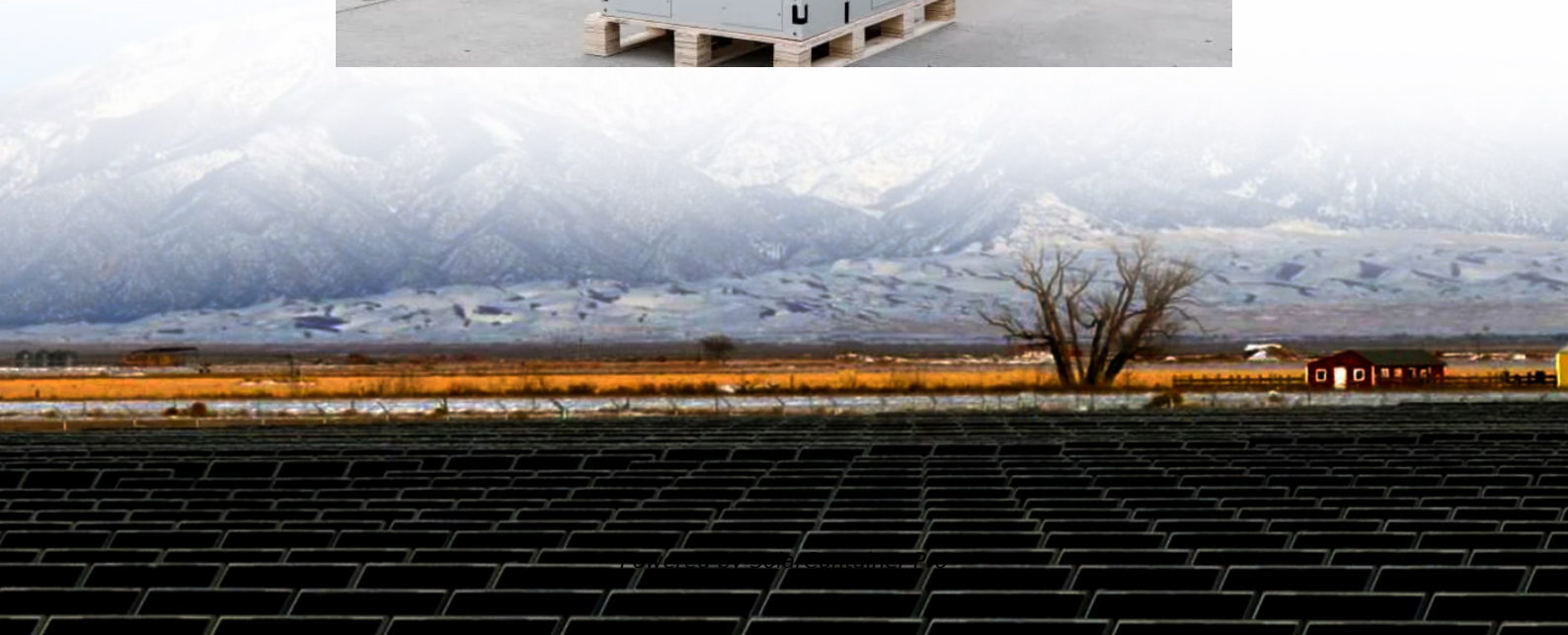


What type of battery is used in energy storage cabinets





Overview

Lithium batteries have become the most commonly used battery type in modern energy storage cabinets due to their high energy density, long life, low self-discharge rate and fast charge and discharge speed. What type of batteries are used in energy storage cabinets?

Lithium batteries have become the most commonly used battery type in modern energy storage cabinets due to their high energy density, long life, low self-discharge rate and fast charge and discharge speed.

What are the different types of batteries used for large scale energy storage?

In this section, the characteristics of the various types of batteries used for large scale energy storage, such as the lead-acid, lithium-ion, nickel-cadmium, sodium-sulfur and flow batteries, as well as their applications, are discussed. 2.1. Lead-acid batteries.

What is energy storage cabinet?

Energy Storage Cabinet is a vital part of modern energy management system, especially when storing and dispatching energy between renewable energy (such as solar energy and wind energy) and power grid. As the global demand for clean energy increases, the design and optimization of energy storage sys.

What is a battery energy storage system?

The battery energy storage systems are mainly used as ancillary services or for supporting the large scale solar and wind integration in the existing power system, by providing grid stabilization, frequency regulation and wind and solar energy smoothing , , , . Table 1. Worldwide operational large scale battery systems.

Why do energy storage cabinets use STS?

STS can complete power switching within milliseconds to ensure the continuity



and reliability of power supply. In the design of energy storage cabinets, STS is usually used in the following scenarios: Power switching: When the power grid loses power or fails, quickly switch to the energy storage system to provide power.

What is a lithium battery management system (BMS)?

Lithium battery modules are usually composed of multiple battery cells, so they need to be monitored and managed by a battery management system (BMS). Battery Management System (BMS): BMS is responsible for monitoring the status of the battery to ensure that each battery cell is within a safe operating range.



What type of battery is used in energy storage cabinets



[WHAT TYPE OF BATTERIES ARE USED IN ENERGY ...](#)

Lithium-sulfur (Li-S) batteries are emerging as a revolutionary alternative to traditional energy storage technologies. With their high energy density and environmentally friendly materials, ...

[WhatsApp](#)

Energy Storage Cabinets: Key Components, Types, and Future ...

Lead-acid battery cabinets are well-known for their cost-effectiveness and reliability, though they offer lower energy density compared to lithium-ion batteries. ...

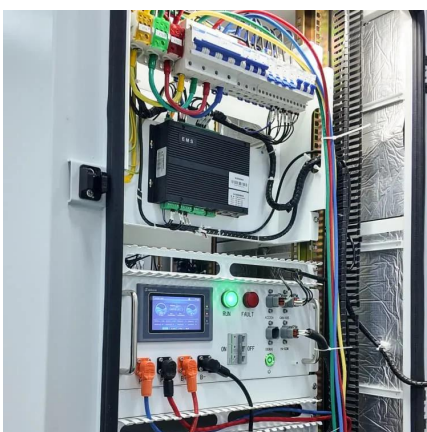
[WhatsApp](#)



What batteries are used in energy storage cabinets? , NenPower

The selection of battery technology for energy storage cabinets is vital, taking into account the immediate and long-term implications of performance and ecology. As the ...

[WhatsApp](#)



The Role of Battery Cabinet Systems in Modern Energy Storage

These systems often use lithium-ion or lithium iron phosphate (LFP) batteries, known for their high energy density, long cycle life, and



environmental friendliness. Key ...

[WhatsApp](#)



What type of battery is used inside the outdoor liquid cooled energy

Liquid-cooled energy storage cabinets primarily use lithium iron phosphate (LFP) battery cells, which offer superior thermal stability and longer cycle life compared to conventional battery ...

[WhatsApp](#)



The Role of Battery Cabinet Systems in Modern Energy Storage

A battery cabinet system is an integrated assembly of batteries enclosed in a protective cabinet, designed for various applications, including peak shaving, backup power, ...

[WhatsApp](#)



Choosing the Right Battery Storage Cabinet: A Comprehensive ...

Choosing the right battery storage cabinet is crucial to minimizing these risks. This comprehensive guide provides a detailed overview of safety, design, compliance, and ...

[WhatsApp](#)



What kind of battery is used in the energy storage cabinet

Lithium-ion batteries, recognized for their high energy density and efficiency, favor utilization in modern energy storage cabinets. These batteries operate on the movement of ...

[WhatsApp](#)



What type of battery is used inside the outdoor liquid cooled ...

Liquid-cooled energy storage cabinets primarily use lithium iron phosphate (LFP) battery cells, which offer superior thermal stability and longer cycle life compared to conventional battery ...

[WhatsApp](#)

What Are the Key Benefits of Battery Energy Storage Cabinets?

With proper maintenance, a Battery Energy Storage Cabinet can last anywhere from 10 to 15 years. Factors like battery type, usage patterns, and environmental conditions can ...

[WhatsApp](#)



Energy Storage Battery Types: A Comprehensive Guide for 2025

Zinc-Air Batteries: Breathing new life into energy storage (literally - they use oxygen from air). Recent prototypes show 72-hour continuous discharge capacity, perfect for off-grid ...

[WhatsApp](#)



What batteries are used in energy storage cabinets? , NenPower

Energy storage cabinets utilize various types of batteries, including 1. Lithium-ion batteries, 2. Lead-acid batteries, 3. Nickel-cadmium batteries, 4. Flow batteries. Among these, ...

[WhatsApp](#)



WHAT TYPE OF BATTERIES ARE USED IN ENERGY STORAGE CABINETS

Lithium-sulfur (Li-S) batteries are emerging as a revolutionary alternative to traditional energy storage technologies. With their high energy density and environmentally friendly materials, ...

[WhatsApp](#)

Polarium® Battery Energy Storage System (BESS) By Experts

Polarium BESS -- Battery Energy Storage System Designed by our leading battery experts, Polarium BESS is a modular, scalable, and intelligent solution that optimizes energy use, ...

[WhatsApp](#)





How to design an energy storage cabinet: integration and ...

Lithium batteries have become the most commonly used battery type in modern energy storage cabinets due to their high energy density, long life, low self-discharge rate and ...

[WhatsApp](#)

Frame Type Energy Storage Cabinets: Powering the Future with ...

Our primary keyword - frame type energy storage cabinet - appears in the first paragraph like a polite handshake. Secondary terms like "modular BESS" (Battery Energy Storage System, for ...

[WhatsApp](#)



Contact Us

For catalog requests, pricing, or partnerships, please visit:
<https://www.straighta.co.za>