

# What type of battery is used for outdoor power supply





## Overview

---

What type of battery does a portable power station use?

Portable power stations use different types of batteries, including lithium-ion, lead-acid, and nickel-metal hydride. Each type of battery has its own advantages and disadvantages, so it's important to choose the right one for your needs.

What kind of battery do you supply for your Leisures?

We supply a massive range of leisure batteries from many different manufacturers for almost all leisures that have ever been built. Below you will find our complete range of 75Ah leisure batteries. We have tested each 75Ah and we have highlighted our star performer from the result of our tests.

What is a portable power station?

A portable power station consists of a battery, a power inverter, and a set of outlets or ports for connecting electronic devices. The battery stores electrical energy, which is then converted by the power inverter into the type of electricity needed by your devices (e.g. AC or DC power).

What can I use to charge my portable power station?

This may include a wall charger, a car charger, or a solar panel. Avoid using third-party charging equipment, as this may not be compatible with your portable power station and could damage the battery.

How many outlets does a portable power station have?

The number and types of outlets and ports on a portable power station will determine how many and what types of devices you can power. Most portable power stations have at least one AC outlet, which can be used to power appliances that require standard household electricity.

How do I choose a portable power station?



Consider the size and weight of the portable power station, as well as the size and weight of the battery and any accessories you may need, such as a carrying case or solar panels. Portable power stations use different types of batteries, including lithium-ion, lead-acid, and nickel-metal hydride.



## What type of battery is used for outdoor power supply

---



### [Different Types of Portable Power Supply Stations](#)

Portable power supply stations have become increasingly popular in recent years, providing a reliable source of power for outdoor activities, emergencies, and more. These stations store ...

[WhatsApp](#)

### **Ryobi 40V Battery Power Adapter with USB-C PD & LED Work ...**

This versatile adapter is designed for Ryobi 40V batteries, transforming them into a portable power supply with lighting and fast-charging capabilities. Equipped with USB-A and Type-C ...

[WhatsApp](#)



### [How to choose outdoor power supply for solar lights](#)

A higher wattage solar panel will charge the batteries more rapidly during the day, ensuring your lights stay illuminated for longer durations at night. Consider the battery type as ...

[WhatsApp](#)



### **Which lithium battery is better for outdoor power supply?**

This article explores the factors that determine the suitability of different types of lithium batteries for outdoor power supply and helps you





make an informed choice.

[WhatsApp](#)



### How to Choose the Best Charging Method for an Outdoor Power Supply

In application scenarios such as camping, outdoor photography, emergency rescue, scientific field research, and vehicle-mounted operations, more and more people are facing a common ...

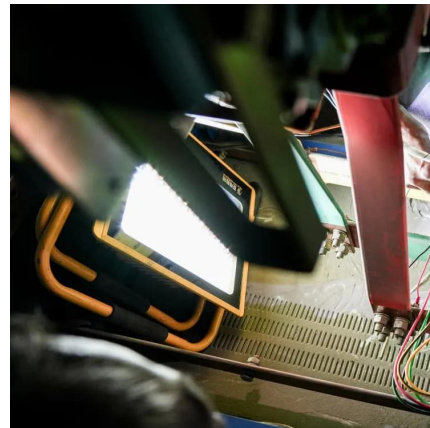
[WhatsApp](#)



### Types of Batteries Used in Portable Power Stations , Guide

Learn about the different types of batteries used in portable power stations, including Lithium-ion, LiFePO4, and Lead-acid batteries. Explore their advantages, lifespan, energy efficiency, and ...

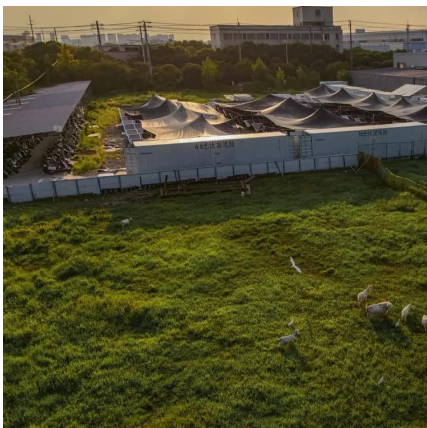
[WhatsApp](#)



### Guide to Choosing the Right Batteries for Outdoor Activities

When selecting batteries for outdoor activities, prioritize weight, capacity, temperature tolerance, and compatibility with your devices. Lithium batteries are often ...

[WhatsApp](#)

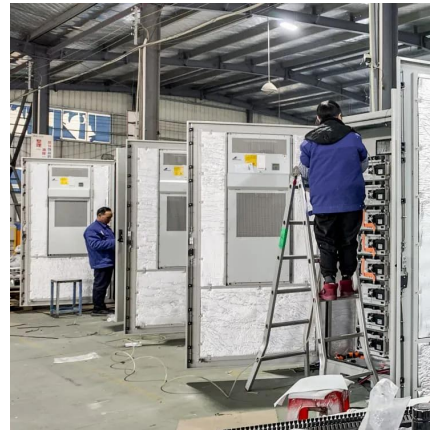




## Guide to Choosing the Right Batteries for Outdoor Activities

Selecting the right battery involves balancing factors like duration, performance, cost, and environmental impact. This guide provides an in-depth look at different battery types, ...

[WhatsApp](#)



## The Ultimate Guide to Portable Power Stations: How to Choose, Use...

Portable power stations use different types of batteries, including lithium-ion, lead-acid, and nickel-metal hydride. Each type of battery has its own advantages and disadvantages, so it's ...

[WhatsApp](#)

## Different Types of Portable Power Supply Stations

Choosing the right battery for your portable power supply station depends on your specific needs and requirements. If you need a high-power capacity, ternary lithium batteries are the way to ...

[WhatsApp](#)



## Product types of outdoor portable energy storage power supply

Outdoor power supply is a multi-functional power supply with built-in lithium ion battery and can store electric energy, also known as portable energy storage power supply. The outdoor power ...

[WhatsApp](#)



## Contact Us

---

For catalog requests, pricing, or partnerships, please visit:  
<https://www.straighta.co.za>