

What to do if the base station power cabinet does not charge





Overview

Can You charge a portable power station while using it?

Yes, you can charge a portable power station while using it, a process known as pass-through charging. This feature allows you to simultaneously power devices and recharge the station, making it highly convenient for continuous use, although it may impact the charging efficiency and overall battery lifespan.

How do you charge a powerstation without a battery?

Plug the charging cable directly into a wall outlet. Do not plug it into a charging station, power strip, or extension cord. Change the charging cable or wall adapter. Move the charging cable to a different wall outlet. Note: Even if your powerstation has a full charge, the fourth light will still blink if plugged in.

How to charge a portable power station using a generator?

Here is how to charge your portable power station using a generator: Connect to Generator: Use the charging cable to connect the power station's AC input to the generator's AC output. Start Generator: Power on the generator to start charging. Make sure it operates in a well-ventilated area to avoid the buildup of exhaust fumes.

Why is my mophie powerstation not charging?

If your mophie powerstation is not charging follow these troubleshooting steps: Plug the charging cable directly into a wall outlet. Do not plug it into a charging station, power strip, or extension cord. Change the charging cable or wall adapter. Move the charging cable to a different wall outlet.

How do you charge a power station with a car?

Detailed instructions for charging your power station with a car are as follows: Connect to Power Station: Insert the car charging cable into the power



station's charging input and the car's 12V outlet. Start Engine: Turn on your car's engine to start charging; this prevents draining the car's battery.

How do I recharge my portable solar power station?

Another great way to recharge your portable solar power station is by using your car as a source of power. It's great for short trips like camping or hiking where you may not have access to an AC wall outlet but still need some electricity for your devices.



What to do if the base station power cabinet does not charge



Can You Charge Astro A50 Without the Base? Everything You ...

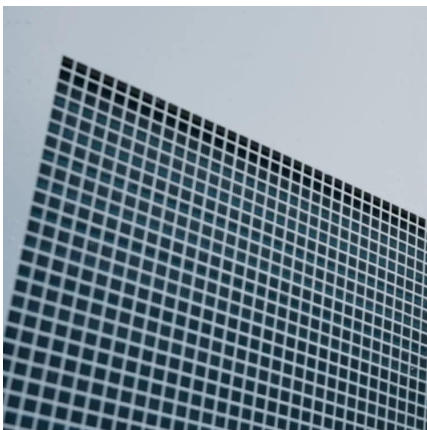
Verdict In conclusion, the Astro A50 headset is designed to be charged using its base station. While some users may wish to charge the headset without the base, it is not ...

[WhatsApp](#)

Why Are My Astro A50 Gen 4 Not Charging? 5 Common Causes ...

If you're facing issues with your Astro A50 Gen 4 not charging, you're not alone. It can be frustrating when your gaming headset doesn't charge as expected, hindering your ...

[WhatsApp](#)



[Why Your Robot Vacuum Doesn't Charge \(And How To Fix\)](#)

Over time, batteries naturally lose their capacity to hold a charge, which then fails to support the automatic vacuum's performance. This kind of aging and degradation means ...

[WhatsApp](#)

[White Light No Charge Astro A50 FIX : r/AstroGaming](#)

The issue is apparent when the headset is on the station with only a white light and no amber light (orange) and the headset won't charge. This fix



is very easy and only requires ...

[WhatsApp](#)



4 Best Ways on How to Charge/Recharge a Portable Power Station

To charge a portable power station, you can mainly use four types of outlets - home outlets, car outlets, solar panels and a generator. Let's take a look at each one in turn. The ...

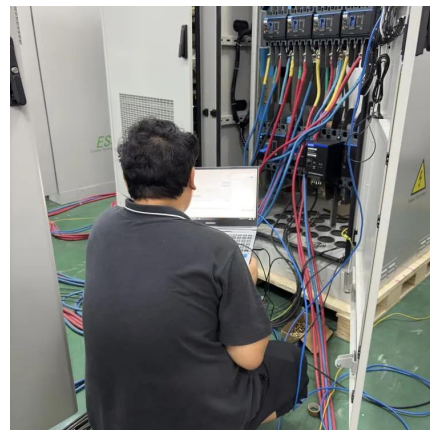
[WhatsApp](#)



[Issues with base station not powering on : r/simplisafe](#)

Have you tried all of the power adapters that were sent with the base stations? One (or more) could also be the culprit. Just a thought and assuming you already tried this. Did they tell you ...

[WhatsApp](#)



Why is my mophie powerstation not charging / not holding a charge

If your mophie powerstation is not charging follow these troubleshooting steps: Plug the charging cable directly into a wall outlet. Do not plug it into a charging station, power strip, or extension ...

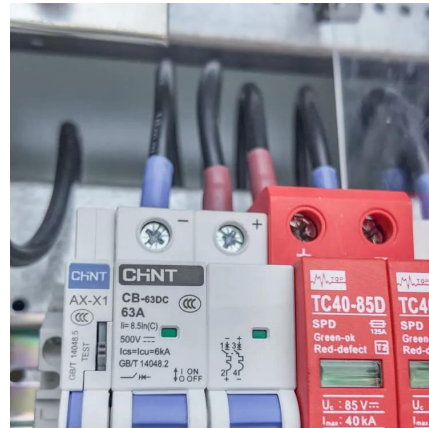
[WhatsApp](#)



Why is my mophie powerstation not charging / not holding a ...

If your mophie powerstation is not charging follow these troubleshooting steps: Plug the charging cable directly into a wall outlet. Do not plug it into a charging station, power strip, or extension ...

[WhatsApp](#)



[Base batteries not charging , SimpliSafe Support Home](#)

If your Base Station still says it isn't charging with new NiMH batteries, I would reach out to our Support team, as we may need to replace the Base Station's power adapter ...

[WhatsApp](#)



Troubleshooting Common Portable Power Station Issues: A ...

Master your portable power station with this definitive troubleshooting guide. Learn to diagnose and fix common issues like failure to turn on, charging problems, and error codes, ensuring ...

[WhatsApp](#)



[Portable Power Station Common Issues and Solutions](#)

Start by checking the battery level. Plug the power station into an AC outlet to charge it. If it doesn't charge, inspect the power adapter and the outlet. If the power station still ...

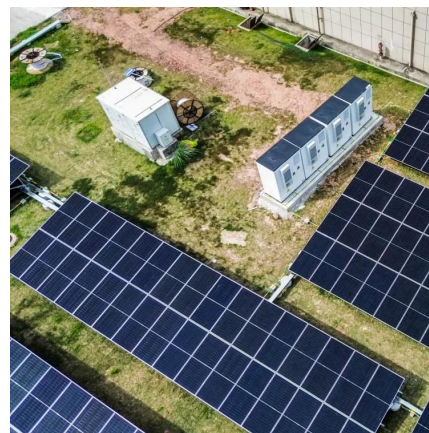
[WhatsApp](#)



Is the base station needed to be consistently connected to the ...

If you move this cable, you won't gain any audio from the console. Additionally, the A50 Base Station does not have a battery so it will not charge from the console. It's designed to always ...

[WhatsApp](#)



Contact Us

For catalog requests, pricing, or partnerships, please visit:
<https://www.straighta.co.za>