

What to do after EMS of communication base station





Overview

How do you communicate with an EMS technician?

Give assessment information about your patient, but avoid offering a field diagnosis of the patient's problem. For example, say, "Patient complains of abdominal pain" rather than "Patient probably has appendicitis." Avoid slang or abbreviations that are not authorized. Use EMS frequencies for only authorized EMS communication.

How do I select a EMS base station Radio?

To select a channel on an EMS base station radio, you should set the channel selector on the local primary channel as used in your area. The channel select button must be depressed in order to transmit on the selected frequency.

How can EMS improve communication skills?

Interpersonal communication is often challenging in EMS. Adopting best practices can improve communication capabilities significantly. • Confidentiality, patient refusals, and falsification of records are all-important legal concepts that an EMT must consider when documenting a call.

What is emergency medical communication?

Emergency medical communication comes in many forms and is essential to team-based patient care. • The medical radio report is structured to present pertinent facts about the patient without providing more detail than necessary. Interpersonal communication is often challenging in EMS.

What should an EMT say over the radio?

Say "Fifteen, one-five." Anything said over the radio can be heard by the public on a scanner. Do not use the patient's name over the radio. For the same reason, do not use profanities or statements that tend to slander any person. Use objective, impartial statements. Use "we" instead of "I." As an EMT, you will rarely be acting alone.



How do you send an ambulance to a wrong location?

Use plain English. Avoid codes. Initial call often comes via telephone but may be radioed from another agency. • Without prompt and efficient dispatch and receipt of information, ambulances can be sent to the wrong location. Many transmissions are between the mobile radio within the ambulance and the dispatcher at a base station.



What to do after EMS of communication base station



[EMT Chapter 15 Communication and Documentation](#)

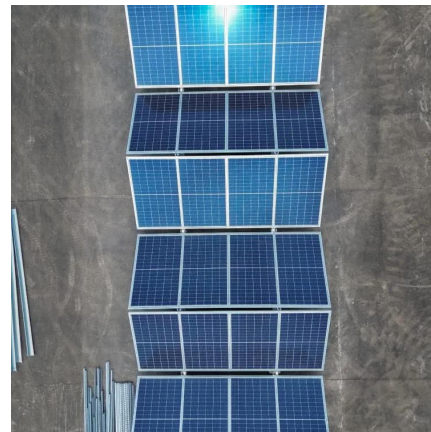
Study with Quizlet and memorize flashcards containing terms like Which of the following is the term for an abbreviated form of the PCR that an EMS crew can leave at the hospital when ...

[WhatsApp](#)

Effective Communication in EMS Systems: A Comprehensive Guide

Effective communication is a crucial aspect of Emergency Medical Services (EMS), ensuring the accurate and timely relay of information. This guide synthesizes multiple perspectives on ...

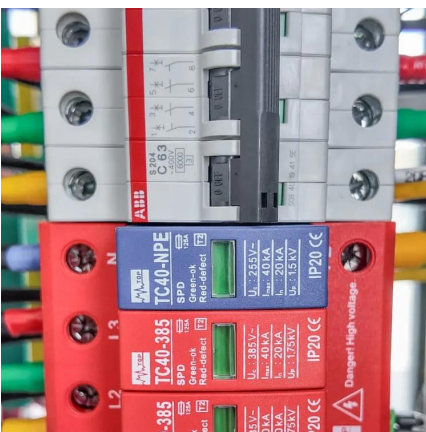
[WhatsApp](#)



[EMR Chapter 5: Communications and Documentation](#)

A) a base station is used by dispatchers to send and receive messages to and from all parts of the service area B) base stations are attached to more than one antenna but can transmit and ...

[WhatsApp](#)



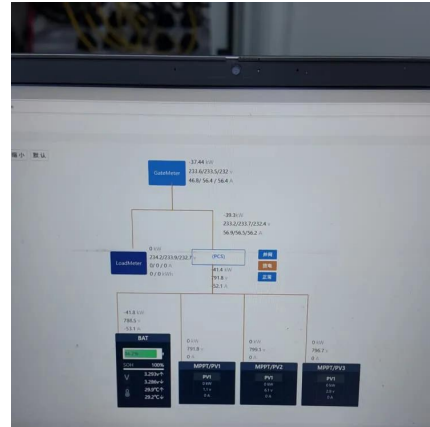
Chapter 2: Preparatory Part 2 - Emergency Medical Responder

Identify components of communication systems. Describe proper radio communications between EMS providers and dispatch. Identify proper



communication with medical direction. ...

[WhatsApp](#)



[Communications Chapter 4 Quiz & Flashcards](#)

Communications in EMS A repeater is a device that receives messages on one frequency and retransmits them on another. An informed refusal is necessary when a patient declines EMS ...

[WhatsApp](#)

EMS Communications & Documentation

All EMS providers/agencies involved must complete a patient care report for each patient contact or request for response (e.g. agency is cancelled enroute to a call then a "cancelled call" chart ...

[WhatsApp](#)



Mastering EMS Communication: The Essential Role of Base Station ...

Understanding the vital requirements for EMS communication, particularly the significance of a base station's height, is crucial for anyone preparing for the North Carolina EMT State Exam. ...

[WhatsApp](#)



[Chapter 4 Flashcards by Katharine Pierce](#)

Radio hardware containing a transmitter and a receiver that are located in a fixed place is known as a (n): cell phone. interoperable communications system. mobile data terminal (MDT). base ...

[WhatsApp](#)



[Chapter 5. Communication Flashcards , Quizlet](#)

B. base station. Which of the below communication technologies is often used as a "back up" system to normal communications used by EMS? A. Mobile radio. B. Cellular/digital phones. ...

[WhatsApp](#)

Chapter 2: Preparatory Part 2 - Emergency Medical Responder

Effective communication with dispatch is equally important. Always notify dispatch when leaving the scene, arriving at the hospital, leaving the hospital, and arriving back at your station. This ...

[WhatsApp](#)



[Emergency Care, Fourteenth Edition, Chapter 17. ...](#)

Dispatcher gives times after most transmissions. Make sure that your radio is on and the volume is adjusted properly. Reduce background noise by closing the vehicle window when possible. ...

[WhatsApp](#)



Contact Us

For catalog requests, pricing, or partnerships, please visit:
<https://www.straighta.co.za>