

What size lead-acid battery should be used with a 100W photovoltaic panel





Overview

Note: If you already have a solar panel and want to know how long it will take to charge your battery, use our solar battery charge time calculator.

Which battery size is best for a solar power system?

The 12V 50Ah battery is another common battery size in solar power systems. Some car batteries are also 50Ah. Because lead acid batteries only have 50% usable capacity, a 50Ah LiFePO4 battery has as much usable capacity as a 100Ah lead acid battery.

How much power does a 100 watt solar panel produce?

Solar Panels Efficiency during peak sun hours: 80%, this means that a 100 watt solar panel will produce 80 watts during peak sun hours. [Click here to read more.](#) There are no devices drawing power from the battery during the charging process.

How many Watts Does a 200Ah lithium battery need?

Because lead acid batteries only have 50% usable capacity, 200Ah lead acid batteries have as much usable capacity as 100Ah lithium iron phosphate batteries. You need around 610 watts of solar panels to charge a 12V 200Ah lithium battery from 100% depth of discharge in 5 peak sun hours with an MPPT charge controller.

What is the capacity of a 100 volt battery?

That means that a 100Ah 12V battery has a 1,200 Wh capacity, a 100Ah 24V battery has a 2,400 Wh capacity, and a 100Ah 48V battery has a 4,800 Wh capacity. Type of battery and related discharge rate.

How do you calculate a 100Ah battery capacity?

Most 100Ah batteries will have 12V, 24V, or 48V voltage. At a 100% discharge rate, the battery capacity is calculated by multiplying 100Ah with voltage (Battery Capacity (Wh) = 100Ah × Voltage). That means that a 100Ah 12V battery has a 1,200 Wh capacity, a 100Ah 24V battery has a 2,400 Wh



capacity, and a 100Ah 48V battery has a 4,800 Wh capacity.

How do I choose a battery?

Battery Type: Select the type of battery you are using from the options provided: Lead-Acid, Lithium, or LiFePO4. Each type has different Depth of Discharge (DoD) and efficiency levels: Voltage: Enter your setup's system voltage. This is typically 12V, 24V, or 48V, but it can vary depending on your requirements.



What size lead-acid battery should be used with a 100W photovoltaic



sizing solar for battery charging , Information by Electrical

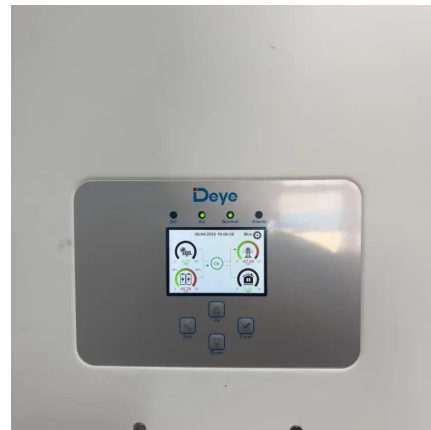
Consulting Electrical Engineer - Photovoltaic Systems Oct 9, 2023 #2 retsparkeedave said: what is the recommended solar panel size to keep a 12v 18 ah battery ...

[WhatsApp](#)

What Size Battery for Solar Panel: A Complete Guide to ...

Selecting the right battery size for your solar panel system is crucial for maximizing energy storage and efficiency. This article outlines key factors, including daily energy needs, ...

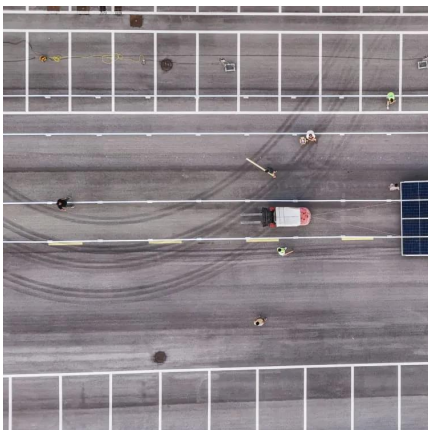
[WhatsApp](#)



What Size Battery Do You Need for a 100-Watt Solar Panel?

Getting the right battery size for your 100-watt solar panel isn't rocket science, but it's definitely solar science. Let's break it down like we're explaining it to a caffeine-deprived ...

[WhatsApp](#)



[What Size Battery Will a 100W Solar Panel Charge?](#)

All things considered, a 100W solar panel should be able to fully charge small lead acid or lithium-ion battery in about 4-6 hours of direct sunlight.



If you have a larger lead acid ...

[WhatsApp](#)



sizing solar for battery charging , Information by Electrical

For perspective, in my area with ideal exposure that would be about a 100W panel. But I would then multiply both panels and battery capacity by some factors to account for how ...

[WhatsApp](#)



What Kind of Battery Do I Need for Solar Panels? Find Out

When setting up a solar panel system, choosing the right battery is crucial. Solar batteries store excess energy for use at night or during cloudy weather, making your system ...

[WhatsApp](#)



[How Many Batteries Do I Need for a 100W Solar Panel?](#)

A 100W solar panel requires a 100ah 12V battery minimum. Solar panel output can range from 400-900 watts so the battery capacity must be at least 1000 watts. 100ah is equal to 1200 ...

[WhatsApp](#)





GRID CONNECTED PV SYSTEMS WITH BATTERY ...

The term battery system replaces the term battery to allow for the fact that the battery system could include the energy storage plus other associated components. For example, some ...

[WhatsApp](#)



What Size Solar Panel To Charge 100Ah Battery? (Calculator)

You just input how many volt battery you have (12V, 24V, 48V) and type of battery (lithium, deep cycle, lead-acid), and how quickly you want the battery to be charged, and the calculator will ...

[WhatsApp](#)

What Size Solar Panel Do I Need to Charge a 12v Battery?

Discover the right solar panel size to efficiently charge your 12V battery. Learn how to calculate wattage, consider battery capacity, and optimize your solar charging setup for maximum ...

[WhatsApp](#)



Contact Us

For catalog requests, pricing, or partnerships, please visit:
<https://www.straighta.co.za>