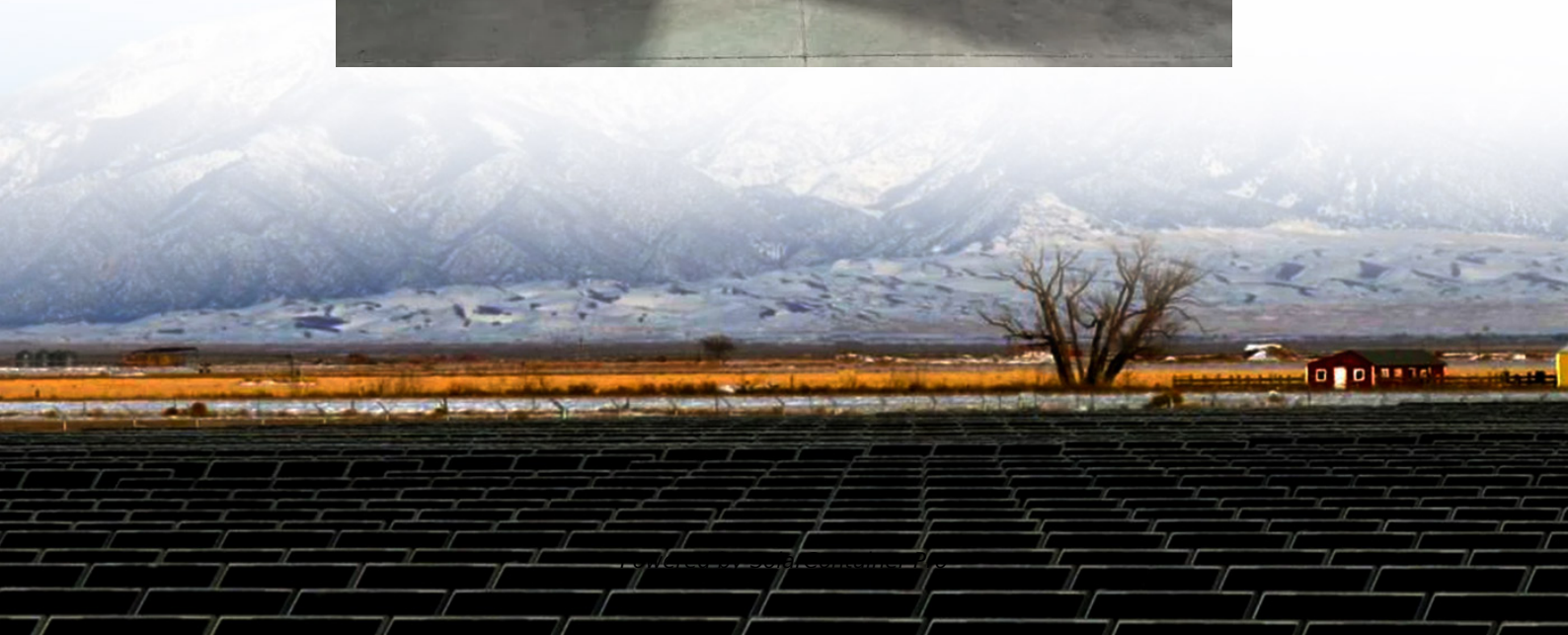


What size inverter should I use for a 300w 12a solar panel





Overview

When selecting an inverter for your solar panel system, follow a simple rule: choose an inverter with a capacity that is at least 20% higher than the total wattage of your solar panels or the total output load you plan to use. This ensures that the inverter can handle the peak power demands of your appliances and can.

For a 300 watt solar panel, you need anywhere between 500-1500 watt capacity inverter. However, the exact size you need will depend on the.

When picking an inverter for your 300 watt solar panel system, there are a few things to keep in mind. 1. Voltage compatibility: Ensure.

If you're planning to set up a small portable solar panel system for RVing/trips, consider investing in a portable solar power station. This is an all-in-one package that makes things simple. Just connect your solar panel to the power station, and it will store the power for you. You can then use the power to run any appliance of your choice. With .

What size inverter for 300 watt solar panel system?

For a 300 watt solar panel, you need anywhere between 500-1500 watt capacity inverter. However, the exact size you need will depend on the size of appliances you plan to use. What size solar inverter do I Need?

A 4.5 kW array (or ten 450-watt solar panels) would just about cover your consumption. The type of solar panels you choose can also impact the size of the inverter you need. Different types of solar panels have different wattage ratings and efficiency levels. The three main types of solar panels are monocrystalline, polycrystalline, and thin film.

How to choose a solar inverter?

Choose an inverter that has a surge watt rating equal to or greater than this value. As for voltage drop, check the wire length between your solar panels and the batteries. If the wire length is long, you may need to choose a lower voltage system (12V, 24V, or 48V) to minimize voltage drop.



Do I need an inverter size chart?

The need for an inverter size chart first became apparent when researching our DIY solar generator build. Solar generators range in size from small generators for short camping trips to large off-grid power systems for a boat or house. Consequently, inverter sizes vary greatly.

Why should you choose a solar inverter size?

Inverters play a vital role in converting the direct current (DC) generated by your solar panels into usable alternating current (AC) for your home. Selecting the proper inverter size ensures that your solar system operates at its full potential, ultimately impacting energy savings and system longevity.

Should your inverter size match your solar panel size?

Match your inverter to your lifestyle, not just your roof. If you're running a fridge, home office, and PS5 all day, size accordingly. If you're barely home, go leaner. Here's the cheat code: your inverter size should usually match your solar panel system's size in kilowatts.

How much power does an inverter need?

The continuous power requirement is actually 2250 but when sizing an inverter, you have to plan for the start up so the inverter can handle it. Third, you need to decide how long you want to run 2250 watts. Let's say you would like to power these items for an eight-hour period.



What size inverter should I use for a 300w 12a solar panel



What Size Solar Inverter Do I Need? Experts Break It Down

Picking the right solar inverter isn't rocket science, but it's not a wild guess either. Match your inverter size to your solar panel output, leave a little headroom, and don't cheap ...

[WhatsApp](#)

How to Choose the Right Size Solar Inverter: Step-by-Step with ...

This guide walks you through calculating inverter size based on panel capacity, power usage, and safety margins. We use real examples from installations in Texas and ...

[WhatsApp](#)



[What Size Inverter For 300 Watt Solar Panel?](#)

In this article, you will learn about what size inverter you need for a 300 watt solar panel, in combination with a 120Ah lithium iron phosphate battery and a 500 watt pure sine ...

[WhatsApp](#)



[How to calculate your solar power requirements](#)

A larger solar panel will collect more energy in less time, but just how big does the solar panel need to be? The power consumption of appliances is usually given in Watts. To ...



[WhatsApp](#)



[What size inverter do I need for solar panels](#)

In this post, you will learn how to determine the right inverter size tailored for your specific solar setup. Power Requirements: Assess the total wattage of all appliances you ...

[WhatsApp](#)



[How To Size A Solar Inverter in 3 Easy Steps](#)

In this guide, we share 3 easy steps on how to size a solar inverter correctly. We explain the key concepts that determine solar inverter sizing including your power needs, the type and number ...

[WhatsApp](#)



What Size Solar Panel Do I Need to Charge a 12v Battery?

Discover the right solar panel size to efficiently charge your 12V battery. Learn how to calculate wattage, consider battery capacity, and optimize your solar charging setup for maximum ...

[WhatsApp](#)

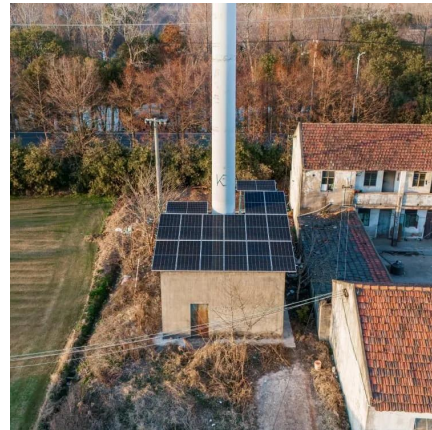




Choosing the Right Inverter Size for a 300W 12A Solar Panel A ...

Summary: Selecting the correct inverter size for a 300W 12A solar panel ensures optimal energy efficiency and system longevity. This guide breaks down key considerations, calculations, and ...

[WhatsApp](#)



Contact Us

For catalog requests, pricing, or partnerships, please visit:
<https://www.straighta.co.za>