

# What size inverter is suitable for a 200w solar panel





## Overview

---

To determine the appropriate size of inverter for your 200W solar power system, follow these 2 steps.

For a 200W solar panel system, you need anywhere between 300-1000 watt inverter to run AC appliances. However, the exact size of the inverter you need depends on the specific appliances you plan to use. At the end of this, I'll also share some of my.

Solar generators are an excellent option if you enjoy RV camping, solo trips, or simply want to avoid getting tangled up in wiring stuff. They come as a complete package with batteries, an inverter, and a charger controller. Personally, I use a portable solar.

If you plan to run AC appliances on your solar panels, then you will definitely need an inverter. However, if you're just using solar energy to charge devices like phones, laptops.

The inverter size should be 25% greater than the largest power load you will need. If you are going to use a 200 watt solar panel, you have to get a 250W inverter. A 100ah battery is also required if you want to store the solar power for use at night.



## What size inverter is suitable for a 200w solar panel

---



### What Size Inverter for 200W Solar Panel? Do you Really Need it?

For a 200W solar panel system, you need anywhere between 300-1000 watt inverter to run AC appliances. However, the exact size of the inverter you need depends on ...

[WhatsApp](#)

### [What Size Inverter Do I Need for a 100 Watt Solar Panel](#)

Installing 100W solar panels will allow you to experience the convenience of solar energy in use so that you can see why solar energy systems are so preferred by most people. ...

[WhatsApp](#)



### [Should I go for a larger MPPT to get more amps](#)

Hi I'm planning a small campervan setup using a 200Ah battery powered by just one 200W solar panel and just need to settle on the choice of Victron MPPT charge controller. ...

[WhatsApp](#)



### What Size Charge Controller Do I Need? - BougeRV Australia

What Size Charge Controller for a 200W Solar Panel? If you have a 200W solar panel with a Voc of 22V, and your system voltage is 12V, your



maximum charge current is ...

[WhatsApp](#)



### [How To Size A Solar Inverter in 3 Easy Steps](#)

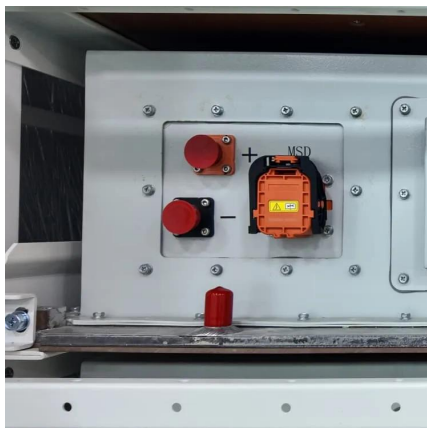
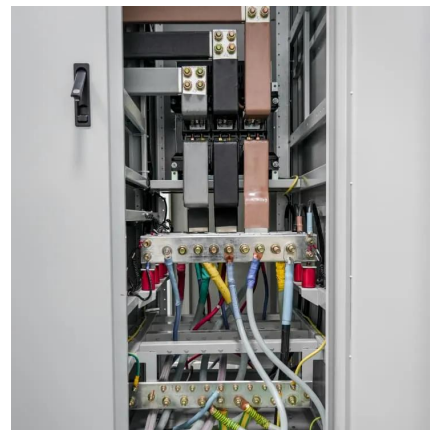
Solar inverters come in a range of sizes. What Size Solar Inverter Do I Need? Inverters come in different sizes starting from as little as 125 watts. The typical inverter sizes used for residential ...

[WhatsApp](#)

### **Solar Panel Inverter Size Calculator: Know What You Need , Angi**

For this reason, you should choose a solar inverter that's similar in size to the DC rating of your solar array, the collective number of panels feeding into the inverter. The DC ...

[WhatsApp](#)



### **What Size Solar Inverter Do I Need? Experts Break It Down**

Picking the right solar inverter isn't rocket science, but it's not a wild guess either. Match your inverter size to your solar panel output, leave a little headroom, and don't cheap ...

[WhatsApp](#)





## What Size Inverter Do You Need for a 200 Watt Solar Panel?

Discover the optimal inverter size for your 200-watt solar panel system with our comprehensive guide, ensuring efficient energy conversion and maximizing solar output.

[WhatsApp](#)



## [Solar Panel Wire Size \(Cable Gauge + Calculations Chart\)](#)

An array of solar panels will capture and convert the sun's energy to electrical power. The flow of charge in the wires to which the solar panels are connected is limited by ...

[WhatsApp](#)

## [What Size Inverter Do I Need for a Solar Panel System?](#)

In this article, we will discuss how to choose the right inverter size for your solar system. Total power of the solar panels. When selecting an inverter, it is important to first ...

[WhatsApp](#)



## Best Inverter For 200 Watt Solar Panel [Updated: August 2025]

The ECO-WORTHY 200W 12V Solar Panel Kit with Battery & Inverter stood out for its reliable 600W pure sine wave output, which handles sensitive electronics smoothly. Its ...

[WhatsApp](#)



### [What Size Inverter to Run a 200W Solar Panel?](#)

This guide will explain what inverter size is needed for a 200W solar panel and also what battery and charge controller sizes you have to get. The inverter size should be 25% greater than the ...

[WhatsApp](#)



### [DC MCB Amps Calculator - SuRCLe Solar Components](#)

Use this page to identify the suitable MCB amps for both solar and battery protection. Solar DC MCB Amps calculator This solar DC MCB amps calculator helps select the correct MCB for ...

[WhatsApp](#)

### [Battery For 200W Solar Panel \(What You Need\)](#)

A 200W solar panel offers various power applications from small fridges to laptops and smaller devices. But, to take advantage of the power this panel can generate in a day, you ...

[WhatsApp](#)





## Contact Us

---

For catalog requests, pricing, or partnerships, please visit:  
<https://www.straighta.co.za>