

What size battery should I use for a 270w photovoltaic panel





Overview

Which battery size is best for solar panels?

For homeowners looking for an optimal blend of performance and reliability, lithium-ion batteries are often the best choice. Understanding battery size for solar panels involves several steps. You must evaluate your energy consumption, solar output, and desired backup time. Here's how to navigate through this calculation process.

What size battery should a 10 kW solar system have?

10 kW solar system with a battery — The ideal size solar battery for a 10 kWp solar panel system is 20–21 kW, as it'll be able to make sure the battery is properly charged throughout the day. Which solar products are you interested in?

.

What is a solar panel and Battery sizing calculator?

A Solar Panel and Battery Sizing Calculator is an invaluable tool designed to help you determine the optimal size of solar panels and batteries required to meet your energy needs. By inputting specific details about your energy consumption, this calculator provides tailored insights into the solar setup that will best suit your requirements.

How do I choose a solar battery size?

Coordinate the sizing of your solar battery with the capacity and production of your solar panel system. The solar panels generate electricity that powers the home and charges the battery, so the sizing should be proportional to ensure efficient utilization of the solar energy harvested. Consider the pricing structure of your electrical grid rates.

How to choose a solar panel battery?



Compare your energy consumption with your solar panel output. Ensure your battery can manage excess energy generated during peak production times and supply power when production is low. This balance is crucial for optimal energy management. Selecting the right battery type is essential for maximizing the performance of your solar panel system.

How many kilowatts is a solar battery?

If you use 8 kilowatt hours (kWh) per day, then you'll need a battery with a capacity of at least 8 kilowatts (kW) to provide all of your energy needs during the day. Keep in mind that you won't always be at home though, so you could get away with a smaller battery. What size solar battery for solar panels?



What size battery should I use for a 270w photovoltaic panel



Solar Battery Size Calculator: What size battery do I need?

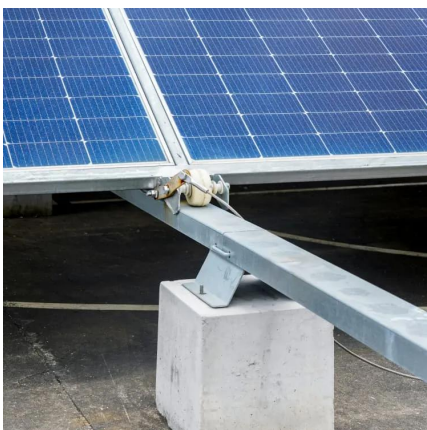
What size solar panel array do you need for your home? And if you're considering battery storage, what solar battery size would be most appropriate? This article includes tables ...

[WhatsApp](#)

What Size Battery Do You Need for Solar Panels: A Complete ...

Discover the essential guide to choosing the right battery size for your solar panel system. This article explores important factors such as daily energy consumption, battery ...

[WhatsApp](#)



[What Size Battery Do You Need? , Solar Calculator](#)

Our solar panel and battery size calculator will tell you how many panels you need, and what size battery you need. All you need to know is your daily electricity usage and an estimate of when ...

[WhatsApp](#)

How to Calculate Solar Panel, Battery, and Inverter Size

Calculate How Much Power You Will Need Before sizing your solar panel system components, it's essential to understand your energy needs. This



will help you determine the appropriate ...

[WhatsApp](#)



Choosing the Right Battery Size For Your Solar System , SolarEdge

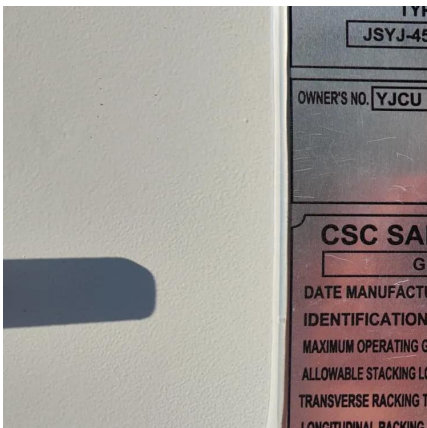
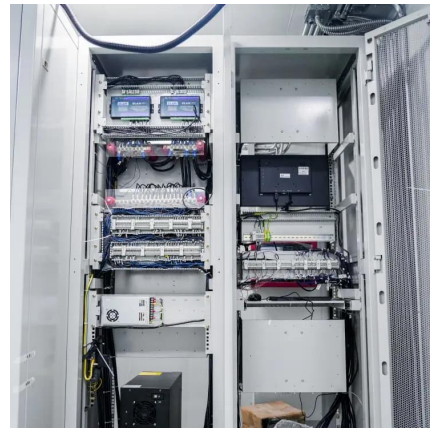
Proper battery sizing ensures that you have enough storage capacity to meet your energy needs, especially during periods of low solar production or grid outages.

[WhatsApp](#)

SolarWorld SW270M 270 Watt 24V Monocrystalline Solar Panel

SolarWorld SolarWorld SunModule Plus 270 Watt, 20V Monocrystalline Solar Panel (SW270M) (No reviews yet) Write a Review SKU: SW270M Weight: 151.00 LBS Contact for price, ...

[WhatsApp](#)



[Solar Battery Size Guide: kWh, Inverter & Runtime](#)

2 days ago · Size your solar battery using load profile, critical loads, efficiency and DoD. Calculator matches kWh, inverter and runtime for code-compliant installs.

[WhatsApp](#)



[How big an inverter should I use for a 270w solar panel](#)

You will also find out which batteries and solar charge controllers you will need, and exactly which AC appliances can be powered with a 100-watt solar panel. Finding the Right Inverter for a 100 ...

[WhatsApp](#)



Contact Us

For catalog requests, pricing, or partnerships, please visit:
<https://www.straighta.co.za>