

What power inverter should I use for a weighbridge





Overview

Before we go any further, we highly recommend that you choose a pure sine wave inverter. This type of inverter delivers high-quality electricity, similar to your utility company. This way, none of your appl.

Do I need grid power to install a weighbridge?

No need for grid power. Power our bridges with generators, solar panles or batteries. low voltage models available. Selecting the correct weighbridge for your requirements depends on a range of factors. Below are some of the most common considerations that should be taken into account when planning the install of a Weighbridge.

How do I choose the right inverter size?

Here is our last bit of advice on how to select the correct inverter size: Check our inverter size chart. List all your appliances in the function of their power output. Apply our inverter size formula. Do not exceed 85% of your inverter's maximum power continuously. Oversize your inverter for extra appliances in the future.

Which Inverter should I Choose?

If you wish to use those items with an inverter, then choose a Pure Sine Wave inverter. If you mostly want to run lights, TV, microwave oven, tools, etc, a Modified Sine Wave inverter is fine for your needs. We often are asked if computers will work with Modified Sine Wave.

How does a portable inverter work?

You just connect the inverter to a battery, and plug your AC devices into the inverter . and you've got portable power . whenever and wherever you need it. The inverter draws its power from a 12 Volt battery (preferably deep-cycle), or several batteries wired in parallel.

Can a weighbridge be run on a battery?

All of our weighbridges can be run either mains power or can be supplied to



run on low voltage, this can be battery, solar or generators.

How do I choose a power inverter cable?

Finding power inverter cables and power inverter cords that work safely is just as essential. In fact, it is very important to be sure you are using the appropriate cable size for your inverter and battery, due to safety concerns.



What power inverter should I use for a weighbridge



[What Size Power Inverter Do I Need To Run A Sump Pump?](#)

The inverter changes DC voltage into AC voltage. The DC voltage comes from the power source. The inverter takes that incoming power and generates the AC output the sump pump uses. ...

[WhatsApp](#)

[Do LiFePO4 batteries need a specific kind of inverter?](#)

I'm a total newbie at this, but I'm trying to decide on a 1000W pure sine wave inverter to pair with my LiFePO4 battery for my basic solar system for a van. I found a 1000W ...

[WhatsApp](#)



Sine Wave Inverters for Weighbridges Power Stability for ...

In industries where accurate weight measurement impacts revenue and compliance - logistics, mining, agriculture, and waste management - sine wave inverters have become indispensable ...

[WhatsApp](#)



Understanding Weighbridge Systems - What They Do, Why They ...

Weighbridge systems are not one-size-fits-all. One of the first things to consider is whether you need a fixed or portable setup. Fixed



weighbridges are installed on-site and built for long-term ...

[WhatsApp](#)



[TESTING/VERIFICATION MANUAL FOR WEIGHBRIDGES](#)

1. DEFINITION: A weighbridge shall mean a weighing instrument constructed with compound levers, with the indicator system carried on foundations separate from the lever system to ...

[WhatsApp](#)



Selecting the Proper Inverter / Frequency Converter for your

Whenever possible, we recommend using the low-frequency transformer isolated GS or Classic Series models for motor loads. The formula to use for all inverters which are to power motor ...

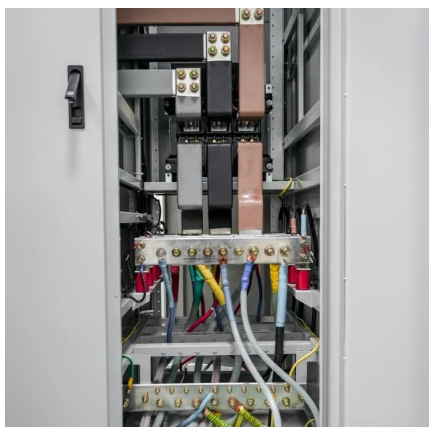
[WhatsApp](#)



What does a power inverter do, and what can I use one for?

The inverter draws its power from a 12 Volt battery (preferably deep-cycle), or several batteries wired in parallel. The battery will need to be recharged as the power is drawn out of it by the ...

[WhatsApp](#)

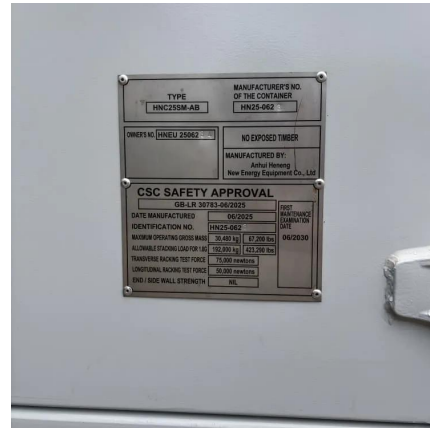




Inverter Wire Size Calculator

By using this inverter wire size calculator, you'll learn how to size battery cables, but that's only one step of the process. Check out the rest of our helpful guides in creating your off-grid power ...

[WhatsApp](#)



[What is weighbridge? , How does a weighbridge work](#)

Five main components for a truck weighbridge or truck scale: 1. Foundation - Permanent installations use a concrete foundation. 2. Steel Platform - This is the structure ...

[WhatsApp](#)

Frequently Asked Questions About Power Inverters , DonRowe

Short Answer: The size you choose depends on the watts (or amps) of what you want to run (find the power consumption by referring to the specification plate on the appliance or tool). We ...

[WhatsApp](#)



What is a Weighbridge? Types, Uses, Maintenance, and Principle

A weighbridge or a truck weighbridge scale is an instrument used to weigh very heavy loads carried by vehicles. This scale consists of a robust steel or concrete platform, a ...

[WhatsApp](#)



Contact Us

For catalog requests, pricing, or partnerships, please visit:
<https://www.straighta.co.za>