

# **What level is the inverter for a communication base station**





## Overview

---

What are the characteristics of different communication methods of inverters?

The characteristics of different communication methods of inverters are obvious, and the application scenarios are different. In order to better weave the underlying network of energy digitization and intelligent development, choose the most appropriate communication method according to local conditions.

How does a low voltage inverter work?

The data signal is connected to the low-voltage busbar through the power line on the AC side of the inverter, the signal is analyzed by the inverter supporting the data collector, and the communication is finally connected to the local power station management system or the cloud platform through the LAN or the Internet 2. Application scenario 4.

How much power does a cellular base station use?

This problem exists particularly among the mobile telephony towers in rural areas, that lack quality grid power supply. A cellular base station can use anywhere from 1 to 5 kW power per hour depending upon the number of transceivers attached to the base station, the age of cell towers, and energy needed for air conditioning.

What are the components of a base station?

**Power Supply:** The power source provides the electrical energy to base station elements. It often features auxiliary power supply mechanisms that guarantee operation in case of lost or interrupted electricity, during blackouts. **Baseband Processor:** The baseband processor is responsible for the processing of the digital signals.

How can the electronic industry reduce power requirements for base stations?

As a result, the electronic industry is exploring new methods to reduce the



power requirements for the electronic equipment used in the base stations. The first approach is to make the base stations more tolerant to heat which will then require less power for air conditioning.

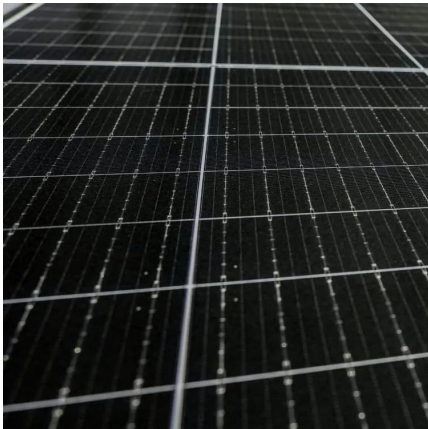
How does a base station work?

It usually connects the device to other networks or devices through a dedicated high bandwidth wire or fiber optic connection. Base stations typically have a transceiver, capable of sending and receiving wireless signals; Otherwise if they only send the trailer it will be considered a transmitter or broadcast point only.



## What level is the inverter for a communication base station

---



### Integrated Sensing and Communication Enabled Multiple Base Stations

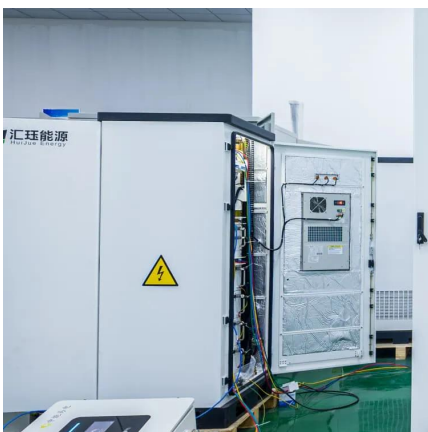
Driven by the intelligent applications of sixth generation (6G) mobile communication systems such as smart city and autonomous driving, which connect the physical and cyber ...

[WhatsApp](#)

### [What is a Base Station in Telecommunications?](#)

What is a Base Station? A base station is a critical component in a telecommunications network. A fixed transceiver that acts as the central communication hub for one or more wireless mobile ...

[WhatsApp](#)



### What Is the Role of a Base Station in Wireless Communication?

Introduction to Base Stations in Wireless Communication Base stations are critical components in wireless communication networks, serving as the intermediary between mobile ...

[WhatsApp](#)

### [Communication Base Station Energy Solutions](#)

Due to harsh climate conditions and the absence of on-site personnel to maintain fuel generators, the company required a reliable solution to ensure the base station's stable operation and ...





[WhatsApp](#)



## The Future of Hybrid Inverters in 5G Communication Base Stations

Modern hybrid inverter systems support remote diagnostics and real-time energy monitoring, aligning perfectly with the needs of decentralized telecom networks. This means ...

[WhatsApp](#)



## [Inverter communication mode and application scenario](#)

Serial inverters and energy storage inverters can be equipped with a data collector with a LAN port. The LAN port collector is connected to network devices such as routers through network ...

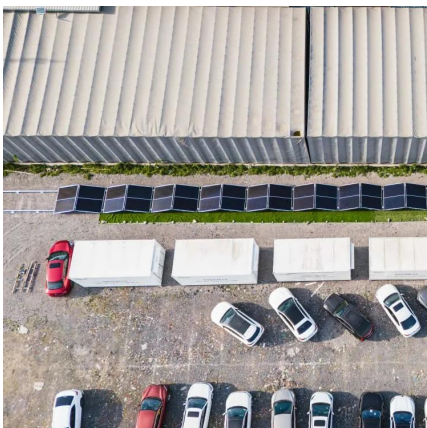
[WhatsApp](#)



## [Choosing the Optimal Channels for Base Stations: A ...](#)

In the world of wireless communication, the choice of channels for base stations plays a critical role in ensuring reliable service, minimizing interference, and optimizing ...

[WhatsApp](#)





## Contact Us

---

For catalog requests, pricing, or partnerships, please visit:  
<https://www.straighta.co.za>