

What kind of inverter is suitable for lithium battery





Overview

Answer: To choose the right inverter for lithium batteries, match the inverter's voltage and capacity to your battery's specifications, prioritize pure sine wave inverters for efficiency, ensure compatibility with lithium battery chemistry, and factor in safety features like overload protection. Why do lithium batteries need inverters?

With today's lithium batteries, inverters play a big part due to the energy that a lithium battery can deliver. For lithium batteries that run external BMS systems, the output current restrictions are much less compared to a lithium battery with an internal BMS system.

How do I choose a lithium-ion battery inverter?

Lithium-ion batteries are becoming increasingly popular for use in renewable energy systems because of their high energy density and long lifespan. When choosing an inverter for a system that uses lithium-ion batteries, it's important to select an inverter that is specifically designed to work with this type of battery.

Which is the best lithium battery for an inverter?

The best lithium battery for an inverter is a lithium ion battery. It offers a high power density, enabling it to store more energy and deliver peak performance, particularly during cloudy days or early morning hours before the sun comes up.

What are the different types of Inverter Batteries?

The most common type of inverter battery is lithium-ion. These batteries provide long-lasting power and can be recharged quickly, making them ideal for homes with electricity that disappears at all hours or if you want constant access to energy without waiting around on electric supply, periods as many do during peak times.

What are the features of a lithium ion inverter?



It is equipped with IP65 protection, natural convection cooling, and can be used in projects at altitudes of up to 4,000 meters and with temperatures ranging from -30 degrees Celsius to 60 degrees Celsius. The inverter incorporates a lithium-ion battery with a voltage range of 180-750 V and a maximum charge/discharge current of 25 A.

What are lithium ion batteries used for?

Lithium-ion batteries can be used with a variety of inverters to convert the stored DC power into AC power, and they are frequently employed in portable gadgets, electric cars, and renewable energy systems.



What kind of inverter is suitable for lithium battery



[What Size Inverter Can I Run Off a 100Ah Battery? A ...](#)

When selecting an inverter to pair with a 100Ah battery, it's crucial to understand the power requirements of your appliances and the capabilities of your inverter. The right ...

[WhatsApp](#)

Best Inverters for Lithium Batteries: Reliable Power Solutions for ...

Choosing the best inverter for lithium batteries is essential for maximizing the efficiency and longevity of your power setup. Whether for off-grid solar systems, RVs, or ...

[WhatsApp](#)



Best Inverters for Lithium Batteries to Power Your Off-Grid and ...

Below is a comparison table summarizing some top-rated inverters and inverter-inclusive setups that work well with lithium batteries for various applications including RVs, ...

[WhatsApp](#)



What Types of Batteries Are Compatible with MPPT Solar Charge

In order to consider whether the appropriate matching is the key to ensure the efficient and stable operation of the system, please refer to



the following brief selection guide: ...

[WhatsApp](#)



[Best Inverters for Lithium Ion Battery \[2023\]](#)

In general, using square wave inverters with lithium-ion batteries is not advised. Here are the most compatible options to go with: 1. Renogy 1000W Pure Sine Wave Inverter - ...

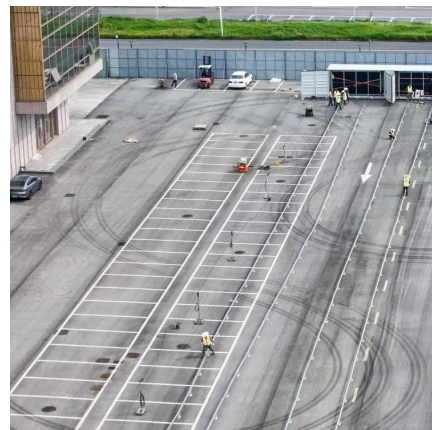
[WhatsApp](#)



[Do You Need a Special Inverter for Lithium Batteries?](#)

In this blog, we will explore the necessity of specialized inverters for lithium batteries, aiming to equip you with the knowledge to make informed decisions about your ...

[WhatsApp](#)



Which Battery is Best for Solar Inverter: A Comprehensive ...

Looking to choose the best battery for your solar inverter? This comprehensive guide simplifies the selection process by comparing lead-acid and lithium-ion batteries while ...

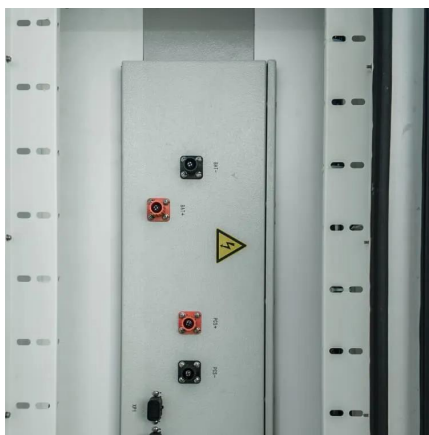
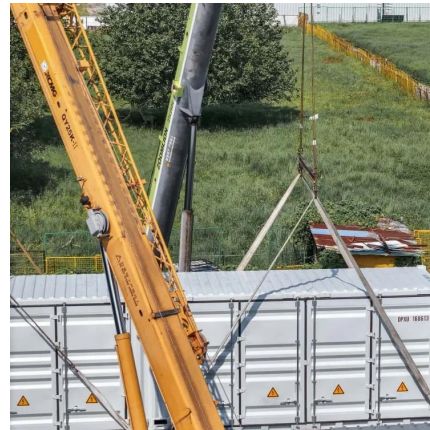
[WhatsApp](#)



[How to Choose the Right Inverter for Lithium Batteries?](#)

Answer: To choose the right inverter for lithium batteries, match the inverter's voltage and capacity to your battery's specifications, prioritize pure sine wave inverters for ...

[WhatsApp](#)



Best Inverter Battery for Home Use in India: An Ultimate Guide

In India, where power outages are common, having a dependable inverter system with a good battery for your house or office is essential. During power outages, an inverter ...

[WhatsApp](#)

[Do Lithium Batteries Need a Special Inverter?](#)

Lithium batteries, including lithium-ion batteries and lithium iron phosphate (LiFePO4) batteries, don't necessarily require a special inverter specifically designed for lithium batteries.

[WhatsApp](#)



[What Size Battery Do I Need for a 1000W Inverter?](#)

Calculating Battery Size for a 1000W Inverter
When selecting a battery to support a 1000W inverter, several factors must be taken into account, including the inverter's wattage, ...

[WhatsApp](#)



Complete Guide to Batteries for 110V 5kw Inverter System

If you have purchased the 5kW inverter system and don't know the number of batteries required, this guide is for you. We will discuss the number of batteries and their ...

[WhatsApp](#)



What Size Inverter Can I Run Off a 200Ah Battery?

When determining what size inverter can be run off a 200Ah battery, it's essential to consider both the power requirements of your devices and the characteristics of the battery itself. A typical ...

[WhatsApp](#)

Best Inverter For Lithium Ion Battery [Updated: August 2025]

After trying out several options, I found the Dewalt 350W Battery Power Inverter with USB, Type-C, DC, and LED truly stands out. Its multiple ports and built-in safety ...

[WhatsApp](#)





[Can Lithium Batteries Work With Any Type of Inverter?](#)

For optimal performance in home energy stems, choose an inverter specifically designed for lithium battery or LiFePO4 battery systems, and always verify compatibility before ...

[WhatsApp](#)

Contact Us

For catalog requests, pricing, or partnerships, please visit:
<https://www.straighta.co.za>