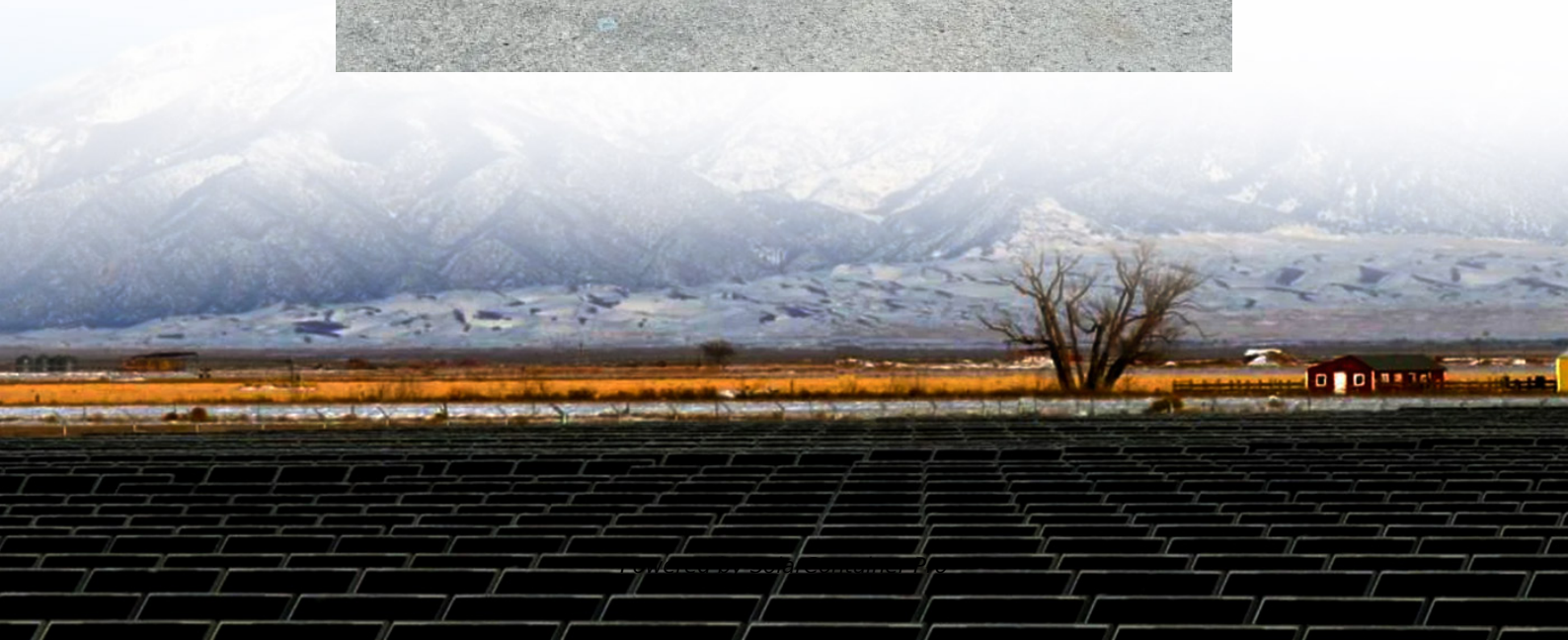


What is the size of the photovoltaic 570 panel





Overview

What is a 570w bifacial solar panel?

Maple Leaf Solar's 570W All-Black Bifacial Solar Panel redefines solar efficiency, providing 10-30% more power over its 30-year lifespan compared to conventional P-type modules. Featuring N-type solar cells with zero Light Induced Degradation (LID), it naturally increases power generation.

What are the different sizes of solar panels?

There are 3 standardized sizes of solar panels, namely: 60-cell solar panels size. The dimensions of 60-cell solar panels are as follows: 66 inches long, and 39 inches wide. That's basically a 66×39 solar panel. But what is the wattage?

That is unfortunately not listed at all. 72-cell solar panel size.

What is the standard size of a solar PV cell?

Depending on manufacturer and type, these dimensions are usually available in millimetres which can be easily converted to centimetres or meters. For example, a standard PV cell's dimensions in length and breadth are 156 mm respectively = $156/10 = 15.6$ cm. Thus, the standard size of a solar PV cell is approximately 15.6 cm by 15.6 cm.

How many solar panels can you put on a roof?

There is no standardized chart that will tell you, for example, "A typical 300-watt solar panel is this long and this wide." If you want to calculate how many solar panels you can put on your roof, you will obviously need to know the size of a solar panel. Example: 5kW solar system is comprised of 50 100-watt solar panels.

How many Watts Does a solar panel produce per square foot?

Dividing the specified wattage by the square footage of the solar panel will give us just this result: The average solar panel output per area is 17.25 watts



per square foot. Let's say that you have 500 square feet of roof available for solar panel installation.

How many kW does a solar panel need?

Required solar panel output = $30 \text{ kWh} / 5 \text{ hours} = 6 \text{ kW}$. Step- 4 Consider Climate Changes: To account for efficiency losses and weather conditions, add a buffer to your solar panel output requirements. Usually, it is 1.2 to 1.5 which is multiplied by the desired output.



What is the size of the photovoltaic 570 panel



[570W Photovoltaic Panel Size: The Complete Guide to ...](#)

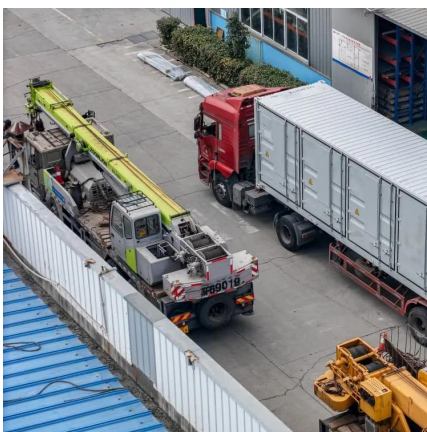
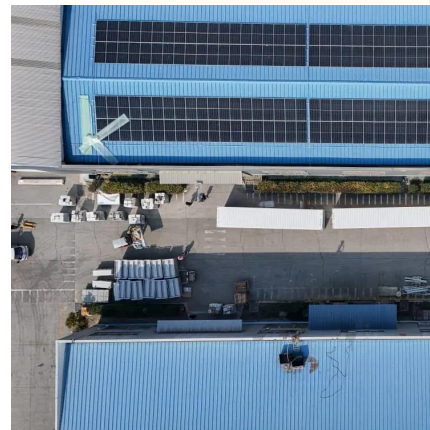
Meta description: Explore the critical dimensions of 570W photovoltaic panels and why size optimization matters for solar efficiency. Discover installation tips, industry trends, and ...

[WhatsApp](#)

[Standard Solar Panel Sizes And Wattages \(100W-500W ...](#)

The goal here is to get to the average solar panel size by wattage. You can find typical dimensions of 100W, 150W, 170W, 200W, 200W, 220W, 300W, 350W, 400W, and 500W solar ...

[WhatsApp](#)



[Beginner's Guide: Sizing Your Solar System . Renogy US](#)

Learn how to accurately size your solar system with this comprehensive guide. Determine the panels, batteries, controller, and inverter required for your setup. Calculate load sizing, solar ...

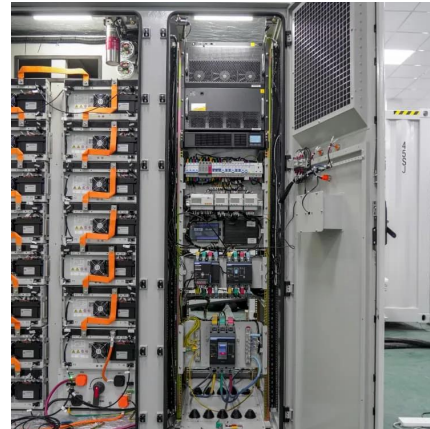
[WhatsApp](#)

[Maple Leaf All Black Bifacial Solar Panel 570W](#)

Maple Leaf Solar's 570W All-Black Bifacial Solar Panel redefines solar efficiency, providing 10-30% more power over its 30-year lifespan compared to conventional P-type modules. ...



[WhatsApp](#)



Hyperion (Runergy) 570W Solar Panel 144 Cells Bifacial HY ...

Hyperion (Runergy) made solar cells in DH144P8-570 two times smaller than the standard size, thus reducing power loss and improving low-light behavior. The efficiency of this model ...

[WhatsApp](#)



Hyperion (Runergy) 570W Solar Panel 144 Cells Bifacial HY-DH144P8-570

Hyperion (Runergy) made solar cells in DH144P8-570 two times smaller than the standard size, thus reducing power loss and improving low-light behavior. The efficiency of this model ...

[WhatsApp](#)



570 Watt Solar panels for sale , Prices, dimensions, weight, ...

Region: United States Features: High efficiency (high output) / Low Light Irradiance / Monocrystalline / Severe Weather Resistant
Panel Dimension: 1948.18x1092.2 mm
Inventory: ...

[WhatsApp](#)





[Solar panel sizes & dimensions: explained \[UK, 2025\]](#)

What size are solar panels in the UK? There are two ways to talk about solar panel size: watts (W) and physical dimensions, though the more common approach is watts. This ...

[WhatsApp](#)



[570 Photovoltaic panel size and weight](#)

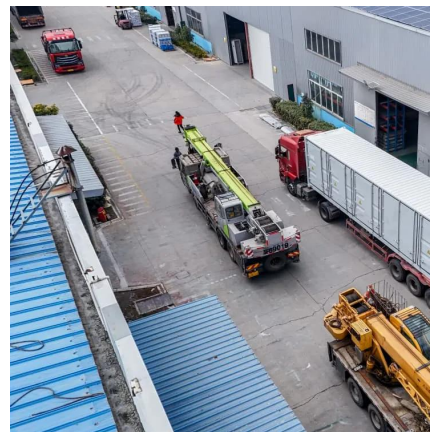
The variation in output will usually not change the size of a single solar panel. The standard size of a 250W solar panel is approximately 1.7m x 1.0m, with slight variations depending on the ...

[WhatsApp](#)

[What are the specifications of 570 photovoltaic panels](#)

What is a 570w bifacial solar panel? year lifespan compared to conventional P-type modules. Featuring N-type solar cells with zero Light Induced Degradation (LID), it naturally increases ...

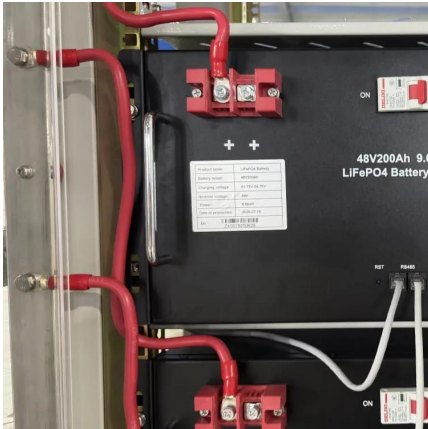
[WhatsApp](#)



[How Many kWh Does A Solar Panel Produce Per Day?](#)

Solar Panel Size (Wattage). Most common solar panel sizes include 100-watt, 300-watt, and 400-watt solar panels, for example. The biggest the rated wattage of a solar panel, the more kWh ...

[WhatsApp](#)



Runergy 570W (Pallet of 31) Bifacial Solar Panels USA Dual Glass

It delivers up to 570W of power and 23.0% efficiency, making it ideal for commercial rooftops, utility-scale arrays, and high-reflectivity surfaces such as canopies or agrivoltaics. Maximum ...

[WhatsApp](#)



Contact Us

For catalog requests, pricing, or partnerships, please visit:
<https://www.straightta.co.za>