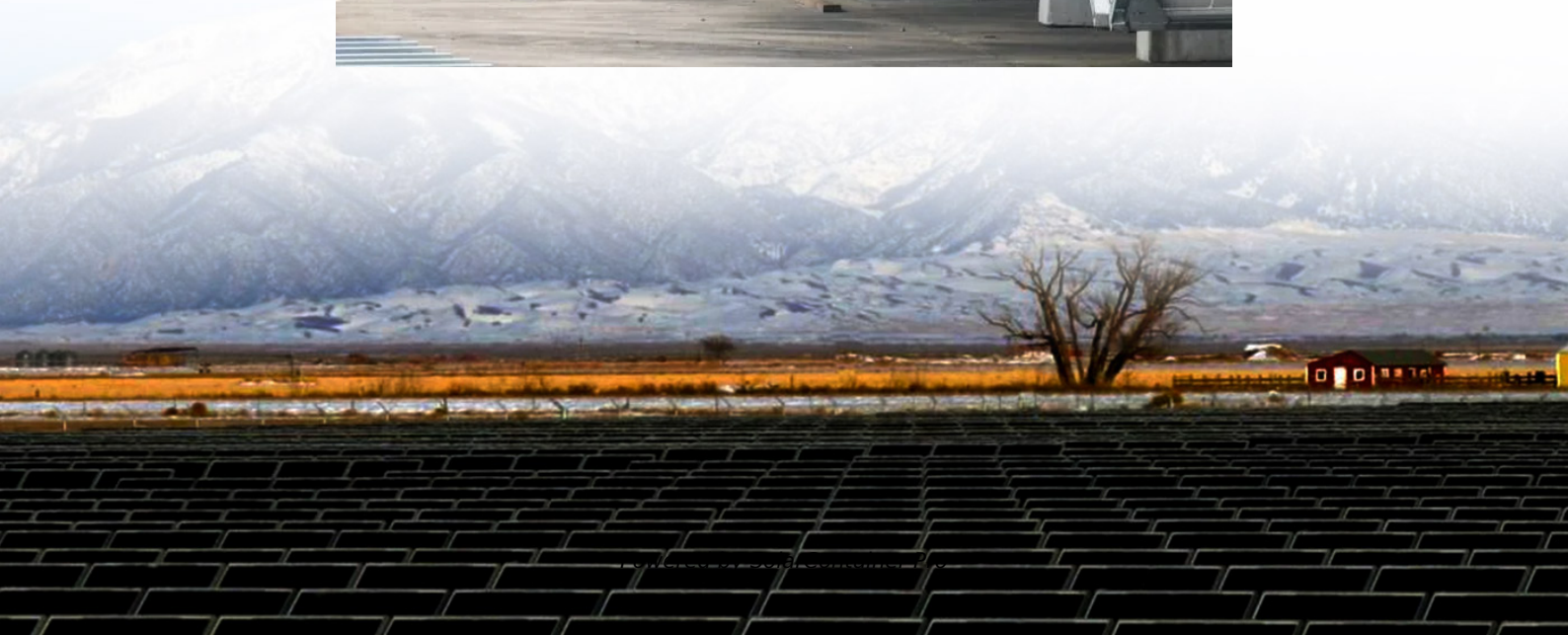


What is the size of photovoltaic panels 650 panel thickness





Overview

What are the different sizes of solar panels?

There are 3 standardized sizes of solar panels, namely: 60-cell solar panels size. The dimensions of 60-cell solar panels are as follows: 66 inches long, and 39 inches wide. That's basically a 66×39 solar panel. But what is the wattage?

That is unfortunately not listed at all. 72-cell solar panel size.

How does solar panel size affect a home?

Solar panel size directly affects: Choosing the right dimensions ensures that your system fits your space while generating enough electricity to meet your needs. Let's explore the most common solar panel size dimensions available today: 1. Residential Solar Panels These are the most popular panels for homes. 2. Commercial Solar Panels.

What are the dimensions of a residential solar panel?

Therefore, understanding these dimensions is essential for effective planning and installation. Residential solar panels are generally smaller to fit the limited roof space of a home. Common dimensions are approximately 65 x 39 inches.

How many solar panels does a solar PV system have?

Your system may consist of 20x330W panels, resulting in a 6,600W (6.6kW) solar PV system. A solar photovoltaic (PV) system's size or capacity is the maximum amount of electricity it can produce. It isn't about the number of solar panels but the system's overall capacity. When considering a solar panel's or system's size, three things are cited:.

How many cells are in a solar panel?

Every solar panel consists of solar cells, which are typically 6-by-6 inches. Based on the number of cells, there are two common types of solar panels available. Typically, residential solar panels contain 60 cells and commercial



panels have 72. Both types of solar panels have different dimensions and weights.

What are the different types of solar panels?

Traditionally, solar panels can be categorised into two sizes: 60-cell and 72-cell solar panels. The size in watts corresponds to their physical dimensions and power output.



What is the size of photovoltaic panels 650 panel thickness



[Solar Panel Size Chart - SizeChartly](#)

Answer: For residential use, the best solar panel size generally falls around 65 x 39 inches. These dimensions are designed to fit typical roof spaces while providing a good balance of efficiency ...

[WhatsApp](#)

650 Watt Solar panels' range of prices, dimensions, sizes, voltage

Introducing the EVO6 SE6-66HBD 650-670W by SUNEVO, a cutting-edge [] Introducing the MSM640-660S-D66, an extraordinary solar panel [] The LP210-M-66-MH-Bifacial solar panel ...

[WhatsApp](#)



[What are the specifications of 650 watt solar panels?](#)

The dimensions of these panels typically range from around 5.5 to 6.5 feet in length and 3.5 to 4.5 feet in width. This size influences how many panels can be placed on a rooftop ...

[WhatsApp](#)



[Solar Panel Size And Weight: A Comprehensive Guide](#)

When considering residential solar panels, typical configurations consist of 60 cells measuring approximately 3.25 feet by 5.5 feet. These



panels cover an area of 17.62 square ...

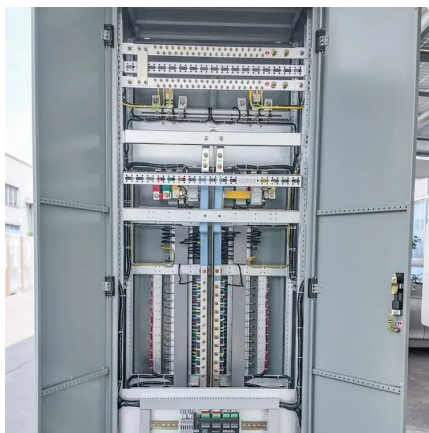
[WhatsApp](#)



Understanding Photovoltaic Panel Sizes - What You Need to ...

In this detailed guide, we'll explain how solar panel dimensions correlate with wattage, the different size standards, and how to calculate the best fit for your energy goals. ...

[WhatsApp](#)



Standard Solar Panel Sizes And Wattages (100W-500W ...

The goal here is to get to the average solar panel size by wattage. You can find typical dimensions of 100W, 150W, 170W, 200W, 200W, 220W, 300W, 350W, 400W, and 500W solar ...

[WhatsApp](#)



650W Solar Panel Guide 2025: Complete Specs, Testing & Top ...

650W panels deliver exceptional space efficiency: With efficiency ratings between 20.8% and 22.5%, these panels generate nearly double the power of standard residential ...

[WhatsApp](#)





Solar Panel Sizes And Wattage , Sizing, Dimensions & Weight

1 kW of solar panels = 4 kWh of electricity produced per day (roughly). For instance, each kW of solar panels will generate around 4 kWh of electricity per day. On a good ...

[WhatsApp](#)



[How Thick Are Solar Panels? \[Updated: September 2025\]](#)

Solar panels come in a variety of sizes, but they are generally around 66 by 40 inches and weigh around 42 pounds. The frame thickness of a solar panel can vary from 32 ...

[WhatsApp](#)

Understanding Photovoltaic Panel Sizes - What You Need to ...

In this detailed guide, we'll explain how solar panel dimensions correlate with wattage, the different size standards, and how to calculate the best fit for your energy goals.

[WhatsApp](#)



Understanding Solar Panel Dimensions In 2025: A Complete Size ...

Understanding solar panel dimensions is crucial for planning your solar system installation, maximizing efficiency, and ensuring compatibility with your available space. In this ...

[WhatsApp](#)



Contact Us

For catalog requests, pricing, or partnerships, please visit:
<https://www.straighta.co.za>