

# **What is the size of photovoltaic panel 55**





## Overview

---

To summarize, 55 cm solar panels yield between 80 and 100 watts, influenced heavily by various factors including technology, environmental conditions, and installation practices. Their compact size makes them suitable for numerous applications ranging from camping to remote monitoring. What are the different sizes of solar panels?

There are 3 standardized sizes of solar panels, namely: 60-cell solar panels size. The dimensions of 60-cell solar panels are as follows: 66 inches long, and 39 inches wide. That's basically a 66×39 solar panel. But what is the wattage?

That is unfortunately not listed at all. 72-cell solar panel size.

What are the dimensions of a residential solar panel?

Therefore, understanding these dimensions is essential for effective planning and installation. Residential solar panels are generally smaller to fit the limited roof space of a home. Common dimensions are approximately 65 x 39 inches.

How does solar panel size affect a home?

Solar panel size directly affects: Choosing the right dimensions ensures that your system fits your space while generating enough electricity to meet your needs. Let's explore the most common solar panel size dimensions available today: 1. Residential Solar Panels These are the most popular panels for homes. 2. Commercial Solar Panels.

How much do portable solar panels weigh?

Portable solar panels weigh from 10 to 30 lbs. The 5 watt panels are the lightest at 2 to 5 lbs. These lightweight solar panels are used to charge mobile phones and other devices. A single person can lift portable solar panels without any problems.

How do I choose the best solar panel size?



The easiest way for homeowners to figure out the best solar panel size for their needs is to work with a dedicated solar installer. Solar installers will size your system based on your energy needs, coupled with your available roof space and the sunlight in your area.

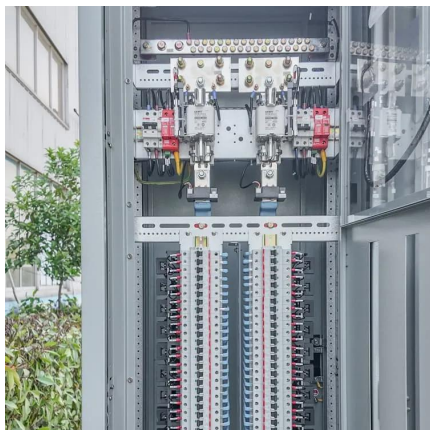
How many Watts Does a portable solar panel generate?

Portable solar panels are smaller, often half the size of regular solar arrays. Solar panels for homes average 250 to 400 watts. Many portable solar panels for RV are in the 100 to 300 watt range. The physical size of the panels often correlate to the watts, the bigger the panels the more watts it can generate.



## What is the size of photovoltaic panel 55

---



### Solar Panel Sizes And Wattage , Sizing, Dimensions & Weight

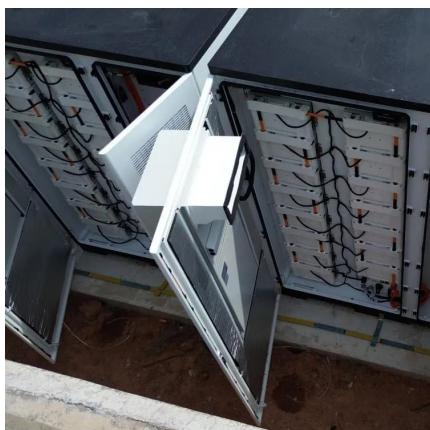
The size or dimensions of the solar panels, measured in height by width, will determine the number of solar panels that will fit on your roof and the wattage of solar panels ...

[WhatsApp](#)

### Understanding Solar Panel Dimensions In 2025: A Complete Size ...

Explore the most common solar panel dimensions in 2025, including residential and commercial sizes. Learn how solar panel size dimensions affect power, installation, and ...

[WhatsApp](#)



### Standard Solar Panel Sizes And Wattages (100W-500W ...

The goal here is to get to the average solar panel size by wattage. You can find typical dimensions of 100W, 150W, 170W, 200W, 200W, 220W, 300W, 350W, 400W, and 500W solar ...

[WhatsApp](#)

### What's the Average Solar Panel Size and Weight?

Most residential solar panels contain about 60 cells in a 6-by-10 grid configuration. The frame and space between cells add a few extra inches,





making the average residential ...

[WhatsApp](#)



### Understanding Photovoltaic Panel Sizes - What You Need to ...

In this detailed guide, we'll explain how solar panel dimensions correlate with wattage, the different size standards, and how to calculate the best fit for your energy goals. ...

[WhatsApp](#)



### [How Big is a Solar Panel? The Solar Panel Size Guide](#)

How Big Is a Solar Panel? What is the most common solar panel size for homes? For a residential solar panel, size is fairly consistent across manufacturers: 65 inches (1.65 meters) by 39 ...

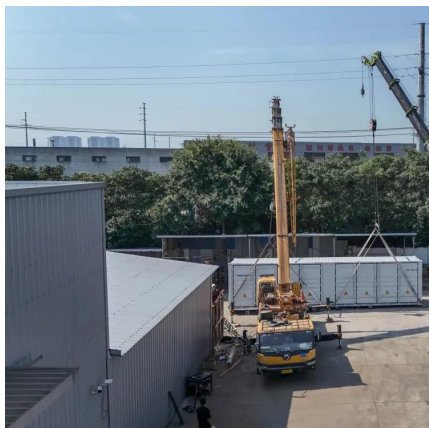
[WhatsApp](#)



### [Solar Panel Size Chart - SizeChartly](#)

Answer: For residential use, the best solar panel size generally falls around 65 x 39 inches. These dimensions are designed to fit typical roof spaces while providing a good balance of efficiency ...

[WhatsApp](#)

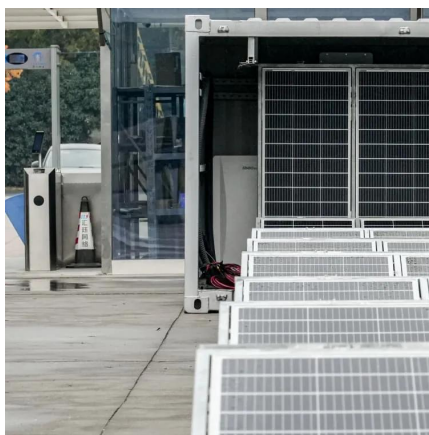




## Understanding Photovoltaic Panel Sizes - What You Need to ...

In this detailed guide, we'll explain how solar panel dimensions correlate with wattage, the different size standards, and how to calculate the best fit for your energy goals.

[WhatsApp](#)



## Complete Guide to Solar Panel Size

Many people want to know the physical size of solar panels, not just how many cells the hold. The average 60-cell solar panel is about 65 inches by 39 inches, or 5.4 feet by 3.25 feet, and ...

[WhatsApp](#)

## [Solar Panel Size Guide \(with 4 Charts\)](#)

Solar panel sizes are measured in two ways: watt output and physical dimensions. Physical dimensions refer to the height, length and width of the solar array. The wattage refers to how ...

[WhatsApp](#)



## Contact Us

For catalog requests, pricing, or partnerships, please visit:  
<https://www.straighta.co.za>