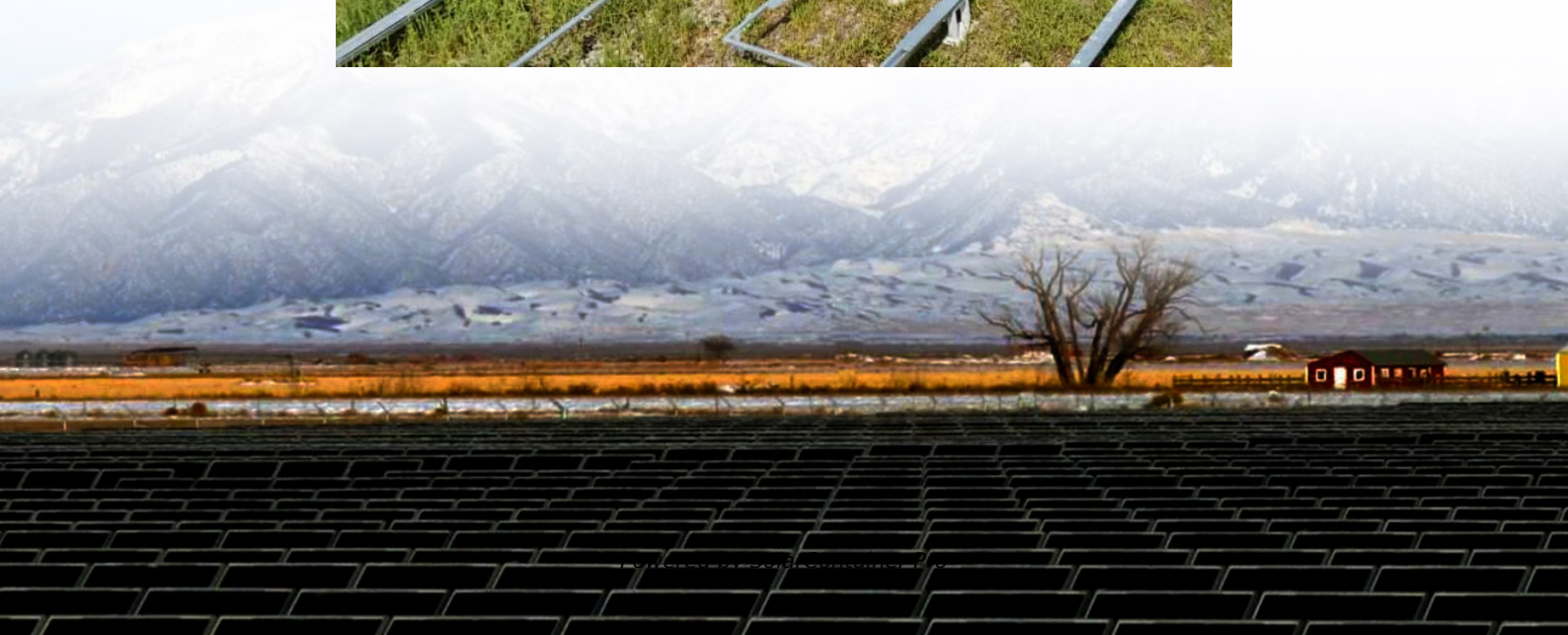


What is the size of double-glass photovoltaic solar panels





Overview

Double-glass solar modules are made up of two layers of tempered glass that cover both sides of the solar panel. As snow accumulates on a typical solar panel or people stomp on it (during installation), the solar cells bend dramatically, resulting in microcracks on the cells.

There is a clear distinction between single and double glass solar panels. This difference should be clear by this- .

The front surface of double glass mono solar cells has an emitter layer and the back side has a dark covering. Passivated Emitter and Rear.

Typically, solar panels have a front glass panel and a back plastic sheet. These single-sided glass panels are supported by frames across the.

What is a double glass (Dual Glass) solar panel?

A double glass (Dual Glass) solar panel is a glass-glass module structure where a glass layer is used on the back of the modules instead of the traditional polymer backsheet. Double glass solar panels were originally heavy and expensive, but the lighter polymer backing panels gained most of the market share.

What are single glass solar panels?

Single glass solar panels, also known as monofacial panels, are the traditional and most common type of solar panels used in residential and commercial installations. These panels consist of a layer of solar cells sandwiched between a glass front sheet and a polymer back sheet.

What is the difference between double-glass solar panels and single-sided solar panels?

The main difference between double-glass photovoltaic modules and single-sided glass solar panels lies in their construction and design, which can impact their durability, performance, and applications. Construction: Double-glass modules consist of two layers of glass sandwiching the solar cells and other components.



Are double glass panels better than single glass?

This efficiency boost comes with a price, though. Single glass panels are often slightly more efficient under ideal conditions due to their lighter weight, which allows for thinner layers between the glass and cells. However, double glass panels hold the edge in durability, lasting longer and experiencing less performance degradation over time.

Do bifacial solar panels have a glass back?

Instead of having an opaque backsheet, they have a glass back. But bifacial modules aren't the only type of panel to use double glass – some monofacial panels do as well. An example is right above my head as I'm typing this. Our 10kW solar system is made up of TrinaSolar 415W Vertex S+ panels. These have 1.6 mm glass sheets front and back.

Should I choose single-glass or double-glass solar panels?

Choosing between single-glass and double-glass solar panels depends on various factors specific to your situation: 1) Installation Location: If you're installing on a weight-sensitive roof, single glass panels might be preferable.



What is the size of double-glass photovoltaic solar panels



What is a Bifacial Solar Panel? A Deep Dive into Double-Sided Solar

Learn what is a bifacial solar panel, how it works, and whether it's the right choice for your solar needs. Explore the pros, cons, and considerations for bifacial solar panel installations.

[WhatsApp](#)

Bifacial solar panels: Benefits & Installation Scenarios (2024)

What is a bifacial solar panel? A bifacial solar panel is a type of solar module that is designed to capture sunlight on both the front and rear sides. Unlike traditional monofacial solar panels ...

[WhatsApp](#)



[Bifacial Solar Panel: Types, Benefits, Feature, Price](#)

Bifacial solar panels have a transparent back sheet or glass layer that allows light to pass through and be reflected off the surface beneath the panel, such as the ground or a rooftop, which then ...

[WhatsApp](#)



[What is the Double Glass Photovoltaic Solar Panel?](#)

Most common configuration for Bifacial Solar Panels is double glass. And even when bifacial modules have not have Fire Class A, still is much



more protect anti-fire than standard back ...

[WhatsApp](#)



The Difference Between Double-glass and Single-sided Glass Solar Panels

In summary, the choice between double-glass photovoltaic modules and single-sided glass solar panels depends on factors such as the intended application, environmental ...

[WhatsApp](#)



What is the Double Glass (Dual Glass) Photovoltaic Solar Panel?

What is the Double Glass Photovoltaic Solar Panel? Glass-glass module structures (Dual Glass or Double Glass) is a technology that uses a glass layer on the back of the ...

[WhatsApp](#)



What is the Difference between Single Glass and Double Glass Solar Panels

Double glass solar panels, also referred to as glass-glass or bifacial panels, are a newer technology in the solar industry. As the name suggests, these panels have glass on ...

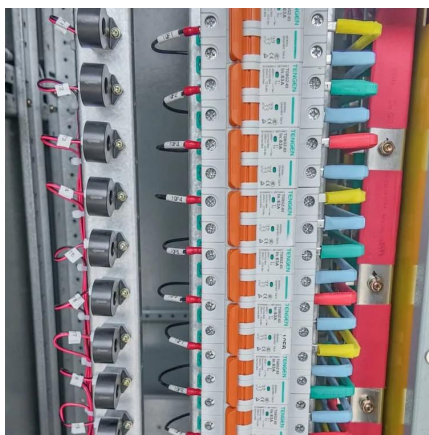
[WhatsApp](#)



Double Glass vs Single Glass Solar Panel: Which is Best?

Both types generate clean energy, but double glass panels generally shine brighter. They can capture 5-25% more sunlight due to their bifacial design, which means they absorb ...

[WhatsApp](#)



Single Vs. Double Glass Solar Panels

Our panels with 1.6mm front and back weigh in at 21kg, which is comparable to single glass. (But thicker glass can be a very good thing). They used to be more expensive - but the price gap ...

[WhatsApp](#)

Single vs. double glass solar panels - which is better?

To make purchasing decisions a little more complex for solar panel buyers, there may be a conflict between single and double/double glass panels. So, which is better?Back in ...

[WhatsApp](#)



2025 Complete Guide to Glass-Glass Solar Panels: The Top ...

What Are Glass-Glass PV Modules? Glass-glass PV modules, also known as double glass solar panels, are photovoltaic modules encapsulated with tempered glass on both the front and ...

[WhatsApp](#)



Contact Us

For catalog requests, pricing, or partnerships, please visit:
<https://www.straighta.co.za>