

## **What is the size of a set of 4 photovoltaic panels**





## Overview

---

What are the different sizes of solar panels?

There are 3 standardized sizes of solar panels, namely: 60-cell solar panels size. The dimensions of 60-cell solar panels are as follows: 66 inches long, and 39 inches wide. That's basically a 66×39 solar panel. But what is the wattage?

That is unfortunately not listed at all. 72-cell solar panel size.

Which solar panel size is suitable for homes?

Homes usually pick 60-cell panels for roofs when choosing the right solar panel. Businesses might choose 72-cell panels for more energy. The effectiveness of solar energy systems varies based on size and specs.

What is the typical size of commercial solar panels?

Commercial solar panels are usually bigger, with 72 cells. They measure about 80 inches by 40 inches. The size and layout of a solar panel impact its power output. Bigger panels can generate more energy.

How do I choose the right solar panel size?

To choose the right solar panel size, consider your roof space. Average roof space for solar panels is 280 to 350 square feet, with each standard panel taking up about 1.7 m<sup>2</sup>. For example, a 6.6 kW system needs around 29-32 m<sup>2</sup> of roof space. This helps avoid choosing a wrong system size, ensuring your solar investment lasts over 20 years.

How much do solar panels weigh?

Most solar panels are a little over 5 feet by 3 feet and weigh 40-45 pounds, but size varies by manufacturer. In this guide, we'll unpack solar panel size in greater detail, helping you determine how large of a system your property can accommodate before you purchase your panels.



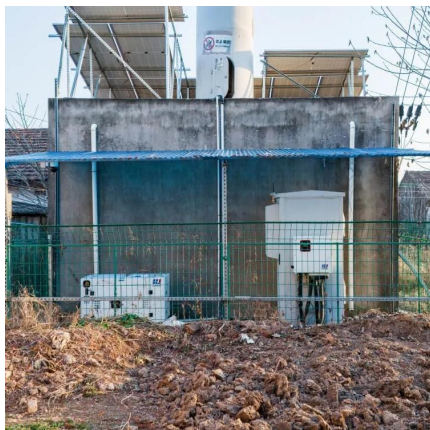
## How many solar panels do I Need?

Once you have your final array size, simply divide by the wattage of your desired solar panels to figure out how many panels you need. Using our example of a 7.2 kW (7,200-watt) array for 100% offset, here's a sample system that would cover our needs: 7.2 kW solar array with 400W Phono Solar panels:  $7,200 \text{ watts} / 400 \text{ watts} = 18 \text{ panels}$



## What is the size of a set of 4 photovoltaic panels

---



### Understanding Solar Panel Dimensions In 2025: A Complete Size ...

Understanding solar panel dimensions is crucial for planning your solar system installation, maximizing efficiency, and ensuring compatibility with your available space. In this ...

[WhatsApp](#)

### [How Big is a Solar Panel? The Solar Panel Size Guide](#)

How Big Is a Solar Panel? What is the most common solar panel size for homes? For a residential solar panel, size is fairly consistent across manufacturers: 65 inches (1.65 meters) by 39 ...

[WhatsApp](#)



### [What Is A Solar Array And Are They Right For Your Home?](#)

Here's a more detailed explanation: The term 'solar array size' describes a solar panel system's capacity to produce electricity. A solar array 300 watts in size, for instance, can produce 300 ...

[WhatsApp](#)



### [Solar Panel Size & Weight Guide \[+ Charts\] - Solartap](#)

Most solar panels are a little over 5 feet by 3 feet and weigh 40-45 pounds, but size varies by manufacturer. In this guide, we'll unpack solar





panel size in greater detail, helping ...

[WhatsApp](#)



### [Design and Sizing of Solar Photovoltaic Systems](#)

The most common PV module that is 5- to 25 square feet in size and weighs about 3-4 lbs/ft<sup>2</sup>. Often sets of four or more smaller modules are framed or attached together by struts in what is ...

[WhatsApp](#)



### [Standard Solar Panel Sizes And Wattages \(100W-500W ...](#)

The goal here is to get to the average solar panel size by wattage. You can find typical dimensions of 100W, 150W, 170W, 200W, 200W, 220W, 300W, 350W, 400W, and 500W solar ...

[WhatsApp](#)



### **A Comprehensive Solar Panel Size Chart: Find the Right Fit**

Solar panel size is crucial for matching energy production to what we use. For example, a 4 KW home solar system saves the atmosphere from about 199,697 lbs of CO<sub>2</sub> ...

[WhatsApp](#)





### [The best solar panel size guide every homeowner needs](#)

Solar cells are assembled in grids, and the most common configurations are 60-cell panels for residential use and 72-cell panels for commercial or utility use. A 60-cell panel ...

[WhatsApp](#)



### [Design and Sizing of Solar Photovoltaic Systems](#)

A PV Array is made up of PV modules, which are environmentally-sealed collections of PV Cells--the devices that convert sunlight to electricity. The most common PV module that is 5 ...

[WhatsApp](#)

### [How to Size a Solar System \[Step-by-Step Guide\]](#)

Once you have your final array size, simply divide by the wattage of your desired solar panels to figure out how many panels you need. Using our example of a 7.2 kW (7,200-watt) array for ...

[WhatsApp](#)



### **A Homeowner's Guide to Solar PV**

Solar panels that produce electricity are known as solar photovoltaic (PV) modules. These panels generate electricity when exposed to light. Solar PV is the rooftop solar you see in homes and ...

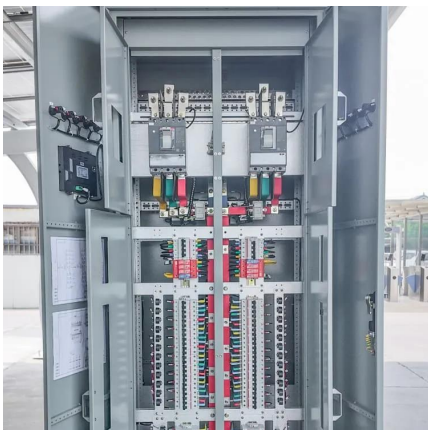
[WhatsApp](#)



### [Solar Panels: How Many and What Size Do I Need?](#)

A simple example would be a system requiring 1428Wh per day for 3.5 hours = 408 Watts PV array size. We will multiply this by 1.25 to account for losses, which puts the array size as 510W.

[WhatsApp](#)



### [Solar Panel Size Guide \(with 4 Charts\)](#)

Solar panel sizes are measured in two ways: watt output and physical dimensions. Physical dimensions refer to the height, length and width of the solar array. The wattage refers to how ...

[WhatsApp](#)

## **Contact Us**

For catalog requests, pricing, or partnerships, please visit:  
<https://www.straighta.co.za>