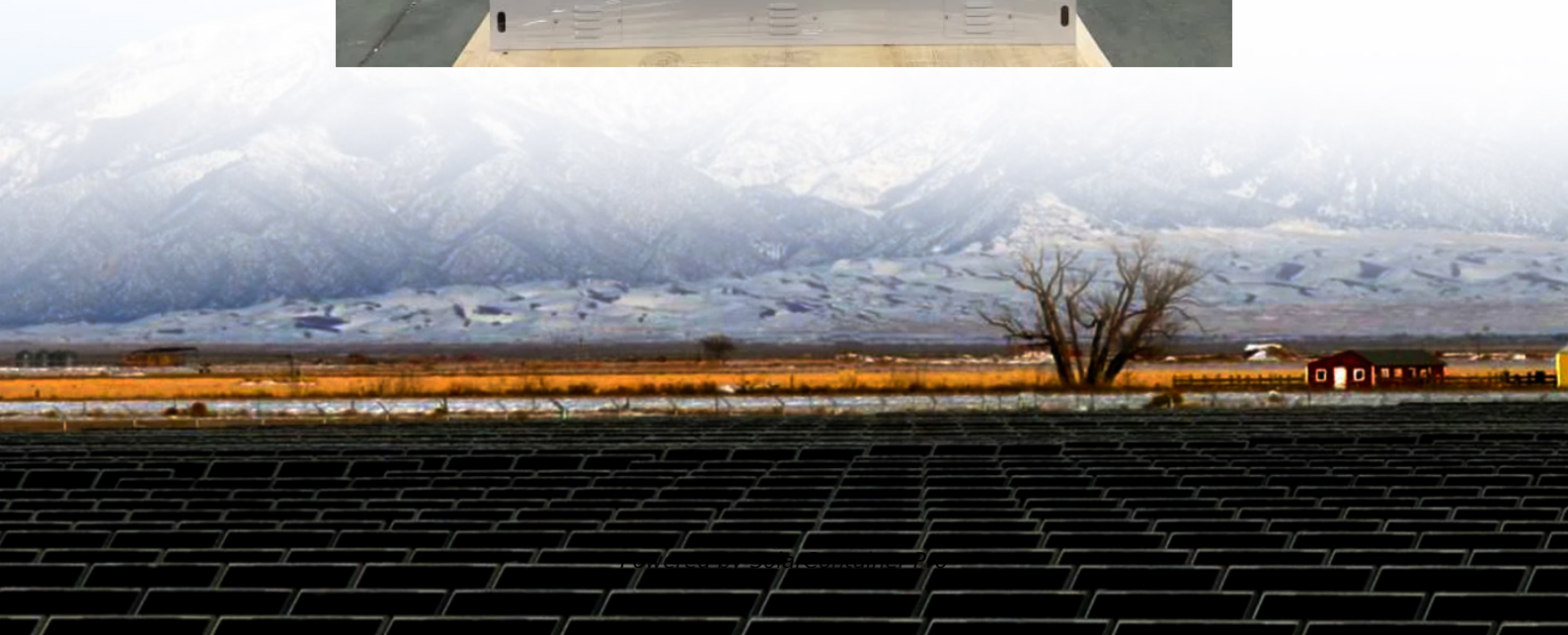


What is the size of a 40w photovoltaic panel





Overview

you'll learn, how much power you can expect from a 40-watt solar panel, what you can power with it, right size battery, charge controller, inverter, and cable size for a 40w solar panel.

By knowing how much power can a 40w solar panel produce will let you know the actual worth of your solar panel and also this will determine what you can run on your.

To calculate the value of amps or current use this formula ($\text{Amps} = \text{Watt/Volts}$) Under ideal sunlight conditions, a 12v 40W solar panel will produce 18 volts, 2.2 amps, and 40-watt voltage output will depend on the intensity of the sun so which means it will fluctuate a lot so does the current.

So you'll need a charge controller or regulator to manage the flow of voltage so you can charge your 12v battery. To calculate the size of the charge controller or regulator for your solar panel use this formula you'll need a 5A charge controller with a 40W solar panel but I would recommend a 10A charge controller which will give you a room.

A 40 W panel is an efficient solution for small-scale energy needs. Its compact size of approximately 26 x 22 x 1.2 inches and weight that's around 8 lbs make it a convenient on-the-go source of energy. Is a 40W solar panel enough?

40W solar panel is enough to recharge your small appliances like cell phones, portable Fans, and LED lights. So in short, you'll only be able to get 200 watts of total power output from your 40W solar panel so is that what you need?

then it is enough for you.

What is a 40 watt solar panel?

A 40-watt solar panel is just an accessory to help you conserve main battery power. It is a useful tool, not the primary power source unless you are really roughing it and cooking outside over a campfire. Also, it is a good backup power source when your main battery runs out and you still need lights and a little water, etc.



What are the different sizes of solar panels?

There are 3 standardized sizes of solar panels, namely: 60-cell solar panels size. The dimensions of 60-cell solar panels are as follows: 66 inches long, and 39 inches wide. That's basically a 66×39 solar panel. But what is the wattage?

That is unfortunately not listed at all. 72-cell solar panel size.

How many Watts Does a portable solar panel generate?

Portable solar panels are smaller, often half the size of regular solar arrays. Solar panels for homes average 250 to 400 watts. Many portable solar panels for RV are in the 100 to 300 watt range. The physical size of the panels often correlate to the watts, the bigger the panels the more watts it can generate.

How many volts does a 12V 40W solar panel produce?

Under ideal sunlight conditions, a 12v 40W solar panel will produce 18 volts, 2.2 amps, and 40-watt voltage output will depend on the intensity of the sun so which means it will fluctuate a lot so does the current. So you'll need a charge controller or regulator to manage the flow of voltage so you can charge your 12v battery.

How many amps does a 40 watt solar panel produce?

To calculate the value of amps or current use this formula (Amps = Watt/Volts) Under ideal sunlight conditions, a 12v 40W solar panel will produce 18 volts, 2.2 amps, and 40-watt voltage output will depend on the intensity of the sun so which means it will fluctuate a lot so does the current.



What is the size of a 40w photovoltaic panel



[Standard Solar Panel Sizes And Wattages \(100W-500W ...](#)

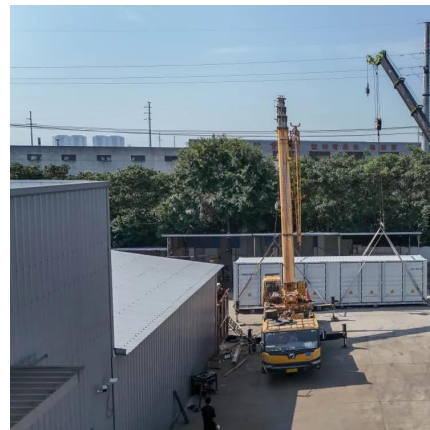
The goal here is to get to the average solar panel size by wattage. You can find typical dimensions of 100W, 150W, 170W, 200W, 200W, 220W, 300W, 350W, 400W, and 500W solar ...

[WhatsApp](#)

40 Watt Solar For RV: What Can a 40-Watt Solar Panel Power?

To get 20 amps an hour, you would need either 3- 100 watt solar panels or 1- 300 watt solar panel. The 40-watt is just too weak to do a good job or even do a bad job slowly.

[WhatsApp](#)



[40 Watt Solar Panel: Everything You Need To Know](#)

you'll learn, how much power you can expect from a 40-watt solar panel, what you can power with it, right size battery, charge controller, inverter, and cable size for a 40w solar ...

[WhatsApp](#)



[40 Watt vs. 50 Watt Solar Panel: What's the Difference?](#)

The size of 40W and 50W solar panels is 3 sq. ft. (same) but the major difference is it's color. The solar cells color of the 50W Monocrystalline Solar



Panel is dark black.

[WhatsApp](#)



[Solar Panel Size Guide \(with 4 Charts\)](#)

Many portable solar panels for RV are in the 100 to 300 watt range. The physical size of the panels often correlate to the watts, the bigger the panels the more watts it can generate. Here ...

[WhatsApp](#)

[Solar Panel Size Chart - SizeChartly](#)

Answer: For residential use, the best solar panel size generally falls around 65 x 39 inches. These dimensions are designed to fit typical roof spaces while providing a good balance of efficiency ...

[WhatsApp](#)



What Size Portable Solar Panel Do You Need? (Wattage Explained)

Here's a quick breakdown of common devices: If you're camping with only a phone and a flashlight, a 40W panel may be enough. But if you plan to power a laptop, fan, or even a mini ...

[WhatsApp](#)





[59 Solar PV Power Calculations With Examples Provided](#)

Learn the 59 essential solar calculations and examples for PV design, from system sizing to performance analysis. Empower your solar planning or education with SolarPlanSets

[WhatsApp](#)



[Waterproof 40W Type-C & DC Outputs Solar Panel Charger](#)

Portable & IP67 waterproof 40W solar charger, with USB Type-C 40W and DC 40W outputs ports & QC3.0 fast charging. Get a balance between charging ability and portability.

[WhatsApp](#)



[40 watt solar panel - 40w solar panel kit for home](#)

Small Solar Panel Specs 40w solar panel A 40 W panel is an efficient solution for small-scale energy needs. Its compact size of approximately 26 x 22 x 1.2 inches and weight ...

[WhatsApp](#)



Contact Us

For catalog requests, pricing, or partnerships, please visit:
<https://www.straightta.co.za>