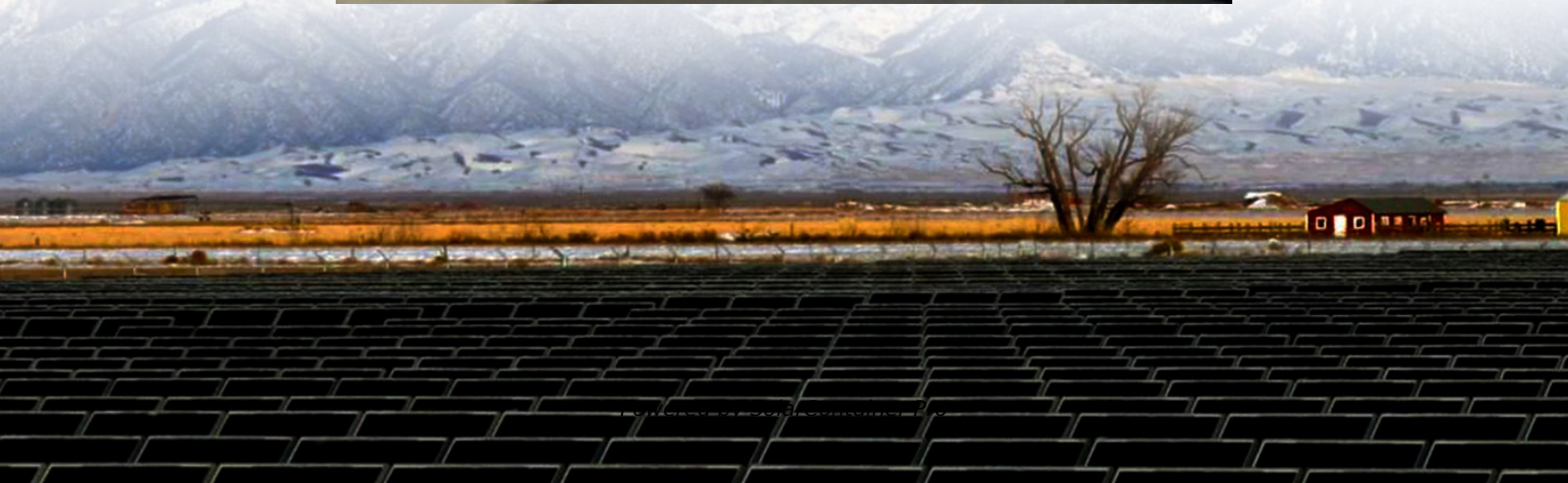


What is the reason for the outdoor energy of the base station





Overview

How much power does a cellular base station use?

This problem exists particularly among the mobile telephony towers in rural areas, that lack quality grid power supply. A cellular base station can use anywhere from 1 to 5 kW power per hour depending upon the number of transceivers attached to the base station, the age of cell towers, and energy needed for air conditioning.

How does a base station affect the environment?

A base station spends its working life providing broadband connectivity to consumers and businesses, and unsurprisingly this accounts for the vast majority (93%) of greenhouse gas emissions. Luckily, there is plenty that we can do to minimize the environmental impact.

How can the electronic industry reduce power requirements for base stations?

As a result, the electronic industry is exploring new methods to reduce the power requirements for the electronic equipment used in the base stations. The first approach is to make the base stations more tolerant to heat which will then require less power for air conditioning.

What is a base station?

Base stations are the parts of telecom networks that connect our mobile phones to the internet. They are often attached to the masts you see on top of buildings or along the side of motorways. They transmit radio signals across a geographical area, receiving replies from mobile phones that are within this coverage area (or cell).

Do base stations use more energy than the cradle to the grave?

Base stations today consume more than 70% of the total energy used in mobile networks. As an industry, we need to look at the entire lifecycle in a way that is no longer linear (from the cradle to the grave), but circular (what



happens beyond the 'grave') to find ways to minimize the environmental impact.

How long does a base station last?

A base station might typically be part of a mobile network for 5-10 years, and during that time, a busy site could handle a Petabyte of data. A base station spends its working life providing broadband connectivity to consumers and businesses, and unsurprisingly this accounts for the vast majority (93%) of greenhouse gas emissions.



What is the reason for the outdoor energy of the base station



Telecommunication base station system working principle and ...

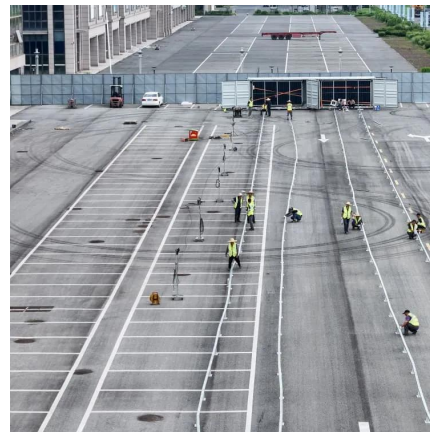
When the output mains power is cut off, the rectifier module stops working, and the solar energy cannot supply power normally. The system output load is powered by the battery ...

[WhatsApp](#)

How Solar Energy Systems are Revolutionizing Communication Base

Energy consumption is a big issue in the operation of communication base stations, especially in remote areas that are difficult to connect with the traditional power grid, ...

[WhatsApp](#)



Renewable Energy Sources for Power Supply of Base ...

It is shown that powering base station sites with such renewable energy sources can significantly reduce energy costs and improve the energy efficiency of the base station sites in rural areas.

[WhatsApp](#)

Cradle to the Grave: Sustainability and the Life of a Base Station

Base stations require energy storage primarily for efficient energy management, uninterrupted power supply, renewable energy integration, and



enhanced operational ...

[WhatsApp](#)



What is large-scale base station energy storage? , NenPower

Large-scale base station energy storage refers to the implementation of substantial energy storage systems in telecommunication infrastructure to enhance efficiency ...

[WhatsApp](#)



Why 5kWh Portable Power Stations Are Essential for Modern Living

4 days ago· The reason is that with the ever-growing number of electronic devices and outdoor activities, as well as remote employment, one needs to access power anywhere. Portable ...

[WhatsApp](#)



How Solar Energy Systems are Revolutionizing Communication ...

Energy consumption is a big issue in the operation of communication base stations, especially in remote areas that are difficult to connect with the traditional power grid, ...

[WhatsApp](#)





[Explainer: Base Load and Peaking Power](#)

When renewable energy advocates talk about phasing out coal-fired power plants in favor of renewables, they'll often use one of a pair of phrases to describe a power plant's output: "base ...

[WhatsApp](#)



Base Station Energy Storage: The Unsung Hero of the World ...

This isn't sci-fi - it's the base station energy storage revolution reshaping our world power grid. Let's unpack how these unassuming tech hubs are becoming grid game-changers.

[WhatsApp](#)



What is the work of energy storage base station , NenPower

Energy storage base stations are pivotal in transforming how we manage energy. They act as reservoirs, absorbing surplus energy during off-peak hours and discharging it ...

[WhatsApp](#)



Cradle to the Grave: Sustainability and the Life of a Base Station

Most base station sites are powered from the electricity grid, and replacing this with 100% solar energy is not always viable. However, adding a single solar panel to each site ...

[WhatsApp](#)



Telecommunication base station system working principle and ...

The ESB-series outdoor base station system utilizes solar energy and diesel engines to achieve uninterrupted off grid power supply. Solar power generation is the use of ...

[WhatsApp](#)



What is a base station energy storage power station , NenPower

The successful operation of base station energy storage power stations hinges on their ability to harness renewable energy. The growing trend toward sustainability and ...

[WhatsApp](#)



Optimal configuration of 5G base station energy storage ...

The high-energy consumption and high construction density of 5G base stations have greatly increased the demand for backup energy storage batteries. To maximize overall ...

[WhatsApp](#)





Contact Us

For catalog requests, pricing, or partnerships, please visit:
<https://www.straighta.co.za>