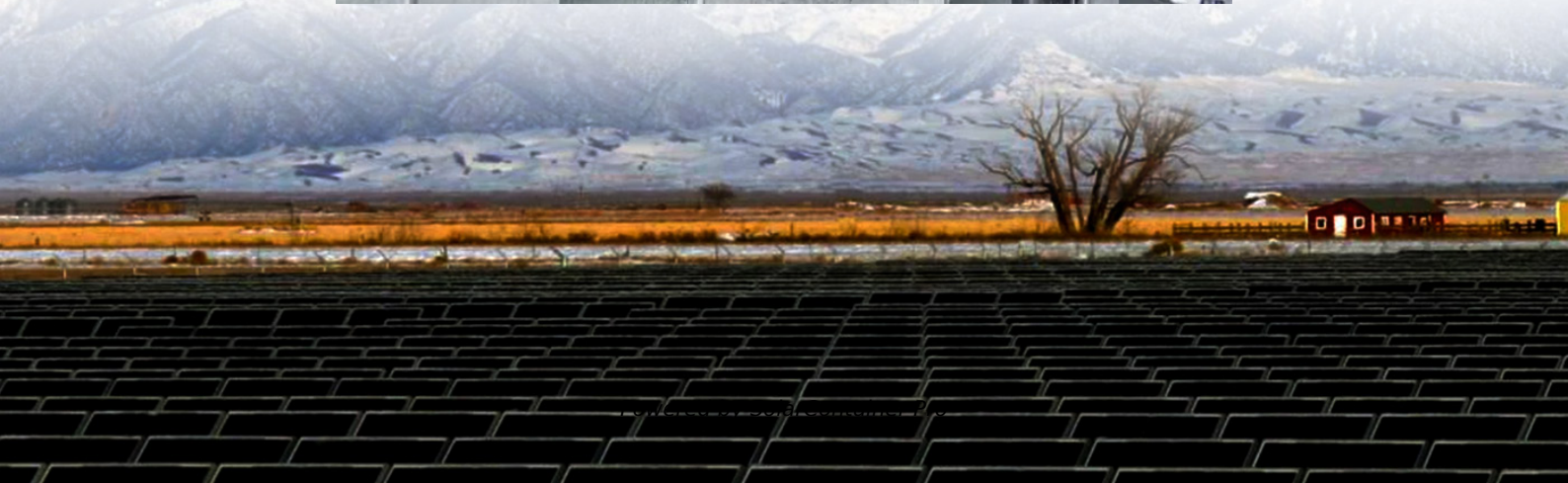
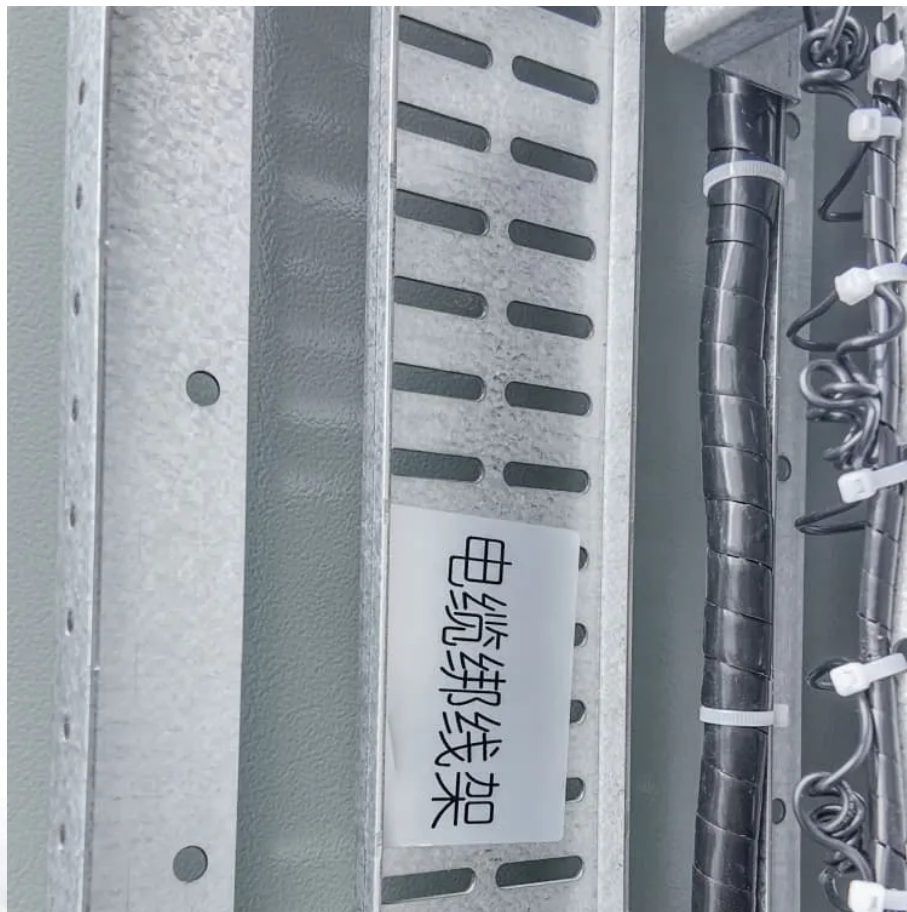


What is the price of photovoltaic panels on the slope of the roof





Overview

The angle of your roof's tilt is simply the slope of your roof. It plays a pretty big role in determining how your solar panels will be installed. That's because the sun isn't always shining directly overhead; sometimes it hits the Earth at an angle. Furthermore, the closer your location sits to the equator, the.

One of the ways solar panel models differ is in their positioning on your roof—in other words, are they fixed or are they adjustable?

As you might guess from their name, fixed panels stay stationary.

The tilt angle of your roof matters a lot when it comes to a fixed solar system, because once the panels go up, they will stay there unless you have an installer come out and readjust the mount. There.

An energy professional, who can weigh your home's individual circumstances, can help you determine the very best angle of the solar panels for your home, but there are also some guidelines you can use to help you figure it out ahead of time. There's a formula you can use to get a general sense of the right angle for your panels: If your home's.

The sun's path changes throughout the year; the days are longer during the summer, which means you get the most sunlight because of the sun's summer path. You will find that your solar panels are able to produce the most energy during the summer because of this. During the winter, the sun's rays are less direct because its path has changed.

How much does a solar roof cost?

The cost of solar roofing tiles is \$21 to \$40 per square foot installed or \$4 to \$14 per watt, depending on the brand, style, roof size and complexity, and kW needed. Solar shingles typically cost more than solar panels. *Includes roof replacement. Before tax credits and incentives. Get free estimates from solar panel installers near you.

Are flat roofs a viable solar energy producing surface?

Not only are flat roofs a viable solar electricity producing surface, but the cost



can be on par with that of standard sloped roof installation. Use this solar calculator to get a ballpark of how much solar would cost for you home and how much you can save by going solar.

How does the slope of a roof affect solar panels?

The slope or pitch of a roof plays a significant role in determining the most efficient installation of solar panels. Roof pitch is usually measured in degrees, and it indicates the angle of the roof relative to the ground. The average roof slope can range between 30° and 40°. Let's explore how this affects solar panel installations:.

What is a good roof slope for solar panels?

Roof pitch is usually measured in degrees, and it indicates the angle of the roof relative to the ground. The average roof slope can range between 30° and 40°. Let's explore how this affects solar panel installations: For most residential properties, a roof with a slope between 30° and 40° is considered optimal for solar panel installation.

Is a solar roof better than a traditional roof?

However, a solar roof reduces electric bills, is usually considered more aesthetically appealing than solar panels, and is more likely to receive HOA approval in some communities. Traditional solar panels produce more power, cost less, and provide a higher return on investment (ROI) than a solar roof. Does a solar roof increase home value?

.

How does roof tilt affect solar panels?

The pitch of your roof will impact your solar panels' tilt. A solar contractor or professional will determine the optimal tilt to maximize your solar energy production. The angle of your roof's tilt, or slope, is a crucial factor in this calculation.



What is the price of photovoltaic panels on the slope of the roof



[Best Roof Pitch for Solar Panels vs Solar Panel Tilt](#)

There are several factors in your control when it comes to finding the ideal pitch for your solar panels. Solar contractors recommend using the latitude of your home's location as ...

[WhatsApp](#)

[Solar Panels on a Flat Roof: 5 Things to Know](#)

Costs are on par with the typical pitched roof. Not only are flat roofs a viable solar electricity producing surface, but the cost can be on par with that of standard sloped roof ...

[WhatsApp](#)



[Roof Pitch for Solar Panels Calculator](#)

Flush mounting can be a simple and cost-effective solution for steep roofs. On the other hand, roofs with a shallow slope (less than 30°) may need to have the solar panels tilted to a higher ...

[WhatsApp](#)

Slope, pitch, gradient of a roof or solar panels (calculator and ...

Free calculator online of the slope or pitch of a roof or photovoltaic solar panels. Use the length and rise of the roof to find the slope, or enter the



slope and the run length to get ...

[WhatsApp](#)



[What is the Best Solar Panel Roof Slope?](#)

While I am not a fan of government subsidies, they are very generous when it comes to solar energy. Including them in the calculation, it absolutely makes sense to install on roofs which ...

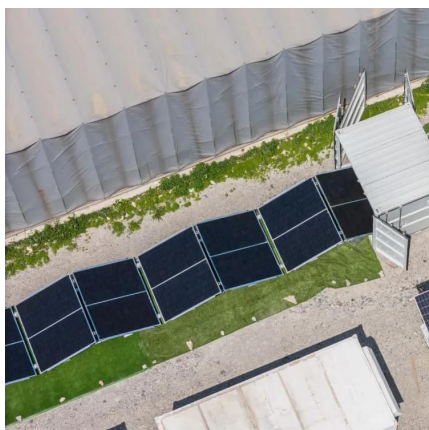
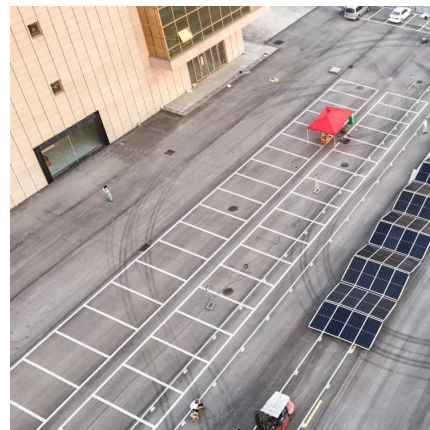
[WhatsApp](#)



[2025 Solar Roof Cost , Solar Shingles vs. Panels Prices](#)

The cost of solar roofing tiles is \$21 to \$40 per square foot installed or \$4 to \$14 per watt, depending on the brand, style, roof size and complexity, and kW needed. Solar shingles ...

[WhatsApp](#)



What Is the Best Roof Pitch for Solar Panels? Understanding the ...

In determining what is the best roof pitch for solar panels, the optimal angle typically lies between 30 to 45 degrees, although this range differs depending on your ...

[WhatsApp](#)



What is the appropriate slope for solar panels? , NenPower

The appropriate slope for solar panels is typically between 30 to 45 degrees, but it can vary depending on latitude, desired energy efficiency, and local climate conditions. The ...

[WhatsApp](#)



Contact Us

For catalog requests, pricing, or partnerships, please visit:
<https://www.straighta.co.za>