

What is the power source of the signal base station





Overview

A BTS is usually composed of: Transceiver (TRX) Provides transmission and reception of signals. It also does sending and reception of signals to and from higher network entities (like the base station controller in mobile telephony). This can be separated into a dedicated device known as a Remote radio head (RRH). Power amplifier (PA) Amplifies the signal from TRX for transmission through antenna; may be in.

Power Supply: The power source provides the electrical energy to base station elements. It often features auxiliary power supply mechanisms that guarantee operation in case of lost or interrupted electricity, during blackouts. What are the components of a base station?

Power Supply: The power source provides the electrical energy to base station elements. It often features auxiliary power supply mechanisms that guarantee operation in case of lost or interrupted electricity, during blackouts. Baseband Processor: The baseband processor is responsible for the processing of the digital signals.

Do base stations need a power supply?

Power supply: The base station requires a power supply to operate. It may be connected to the electrical grid or have a backup power source like batteries or generators in case of power outages. 7. Backhaul connection: The base station needs a backhaul connection to connect to the core network.

What are the functions of a base station?

2. Antenna: The base station has one or more antennas to transmit and receive signals. Antennas are responsible for radiating the signals into the air and capturing the signals from the air. 3. Baseband processing unit: It is responsible for processing the signals received from the transceiver.

How do cellular base stations work?

Most transceivers in the cellular base stations are run by 48 VDC to charge the batteries and power the communication equipment. The air conditioning of the base station runs at 220 VAC. These base stations can be powered by two



types of diesel generators.

How does a base station amplify a signal?

Signal Amplification: The received signals are typically weak, so the base station amplifies and strengthens them using sophisticated radio frequency (RF) equipment. This ensures that the signals are strong enough to be processed and transmitted further.

Why are base stations important in cellular communication?

Base stations are important in the cellular communication as it facilitate seamless communication between mobile devices and the network communication. The demand for efficient data transmission are increased as we are advancing towards new technologies such as 5G and other data intensive applications.



What is the power source of the signal base station



What is a Base Station?

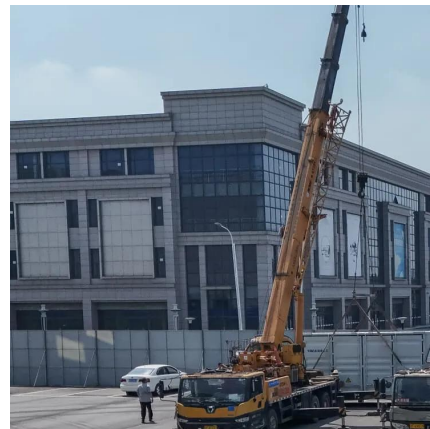
A BTS is usually composed of: Transceiver (TRX) Provides transmission and reception of signals. It also does sending and reception of signals to and from higher network entities (like the base station controller in mobile telephony). This can be separated into a dedicated device known as a Remote radio head (RRH). Power amplifier (PA) Amplifies the signal from TRX for transmission through antenna; may be in...

[WhatsApp](#)

The Inner Workings of Steam Base Stations: A Comprehensive ...

What are the key differences between different models of steam base stations? Different models of steam base stations mostly vary in their specifications, functionality, and ...

[WhatsApp](#)



7 Best Ham Radio Base Stations in 2025

Power Output: Measured in watts, the power output is directly related to the performance of the ham radio base station. Some models can have a rated output of up to 100 watts, which is ...

[WhatsApp](#)



What is Telecommunication Base Station , China Hop

To supply power, it is necessary to first introduce



municipal AC power and then convert it into DC power through the power supply. Not only that, but also consider abnormal situations: what ...

[WhatsApp](#)



What is the difference between Base Station and Repeater

In summary, both base stations and relay stations play indispensable roles in wireless communication systems. As the core of mobile communication networks, base stations ...

[WhatsApp](#)



[How solar-powered base station signals are transmitted](#)

Radio waves serve as the medium for transmitting signals, which are generated and modulated by base station equipment. The specific frequency used can vary based on the ...

[WhatsApp](#)



Understanding the Basics: What is a Base Transceiver Station?

The base station itself consists of antennas, transceivers, a baseband unit (BBU) that handles the digital processing of radio signals, and other hardware that process the signals.

[WhatsApp](#)



Starlink Network Architecture: User Terminal, Satellite, Ground Station

The ground station processes the request, relays the data back to the satellite, which then sends it to the user terminal. This communication process is crucial for delivering ...

[WhatsApp](#)



Contact Us

For catalog requests, pricing, or partnerships, please visit:
<https://www.straighta.co.za>