

What is the inverter voltage when fully charged





Overview

Many inverters have a built-in voltage display showing the battery's current charge level. A reading between 12 and 14 volts generally means it's fully charged. How do you know if an inverter battery is charging?

Some inverters have a built-in light or sound mechanism. However, in atypical systems, a specific light color indicates whether the battery is charging, charged or uncharged. There are also inverter battery low and overload indicators. Some inverters incorporate sound. When the battery is fully charged, a "beep" will notify you.

How do you know if an inverter battery is full?

When an inverter battery is charging, the voltage is 14.4-14.6 volts. When the charge is almost done, the voltage drops to around 13.7 volts. When the battery charge reaches float level, the charge controller should indicate it is full. A high quality charge controller provides all the information you need about the battery charge.

Why is my inverter battery not charging?

The inverter battery might not be charging due to several potential reasons. First, check if the battery connections are secure and free from corrosion, as poor connections can impede charging. Ensure that the charging cable or wire is intact and undamaged.

What does trickle charge mean on an inverter?

Inverters also have a trickle charge mode. If turned on, it will continuously charge the battery so it is always full. This feature ensures that the battery is always fully charged. Depending on the inverter, you may or may not be able to turn this feature off. How do you charge a dead inverter battery?

.

Can a battery run an inverter?



The first major issue with using this rating for inverter use is the terminal voltage rating of 7.2V. Let's say that a battery can produce 300 DC amps for 30 seconds, while maintaining 7.2V. While this is great for starting a cold engine, it is not for running an inverter.

How do you monitor an inverter battery charge?

Another way to monitor an inverter battery charge is through a voltmeter. A voltmeter is used to measure electric potential between two points in an electronic circuit. To use a voltmeter, connect it to the red and black terminals of the battery. Do this only if the battery has not been used for at least two hours.



What is the inverter voltage when fully charged



[How Do I Know If My Inverter Battery Is Full?](#)

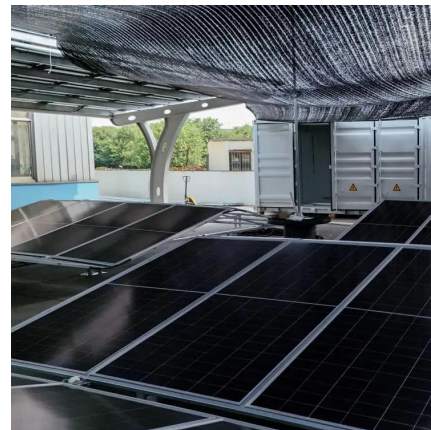
It is crucial to determine if your inverter battery is fully charged to ensure optimal performance and avoid overcharging. This article will provide a comprehensive guide on how ...

[WhatsApp](#)

Why Is My Inverter Turning On But No Output A Practical Guide

For a 12V system, a fully charged battery should read around 12.6 to 12.8 volts. If the voltage is significantly lower, your battery may be nearly discharged or failing.

[WhatsApp](#)



Low voltage alarm and full battery. Is my inverter broken?

The low voltage alarm on both my inverter and charge controller are triggered whenever I try to use anything high powered (around 750w or 1000w) It is a 2000w off-grid ...

[WhatsApp](#)

Understanding Battery Specifications and How They Apply to your Inverter

The first major issue with using this rating for inverter use is the terminal voltage rating of 7.2V. Let's say that a battery can produce 300



DC amps for 30 seconds, while maintaining 7.2V.
...

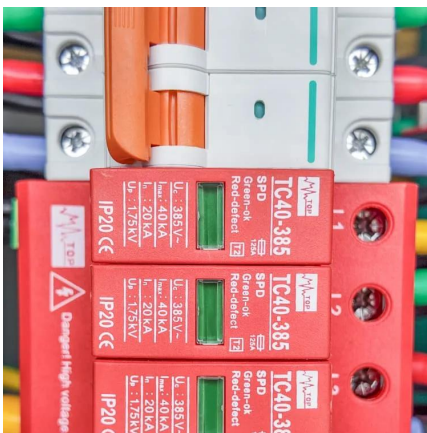
[WhatsApp](#)



[How to Check and Maintain Your Inverter Battery Voltage](#)

Here are a few ways to measure the voltage in your inverter battery. Inverter Display: For further instructions on figuring out the voltage readings, review the manual that ...

[WhatsApp](#)



Battery is immediately throwing the inverter into alarm mode

The battery voltage when fully charged is 12.84v or better but as soon as it's hooked up to the inverter (via 2/0 (I know overkill)) the inverter will go into alarm mode. Both inverters do this. ...

[WhatsApp](#)



How to Know If Your Inverter Battery Is Fully Charged: Simple

To determine if your inverter battery is fully charged, you can use a multimeter to check the voltage level of the battery. A multimeter is a simple device that measures electrical ...

[WhatsApp](#)





How to Know If Your Solar Battery is Fully Charged (3-Step Guide)

Your solar inverter shows the State of Charge (SoC) as a percentage, making it the easiest way to know if your battery is full. Simply press any button to wake the screen and look for the battery ...

[WhatsApp](#)



[What to Do When Your Inverter Battery is Fully Charged?](#)

Typically, a green or blue light signals a full charge. A multimeter can help you check the battery voltage. A reading between 12 to 14 volts usually indicates that the battery is fully charged. ...

[WhatsApp](#)

Contact Us

For catalog requests, pricing, or partnerships, please visit:
<https://www.straighta.co.za>