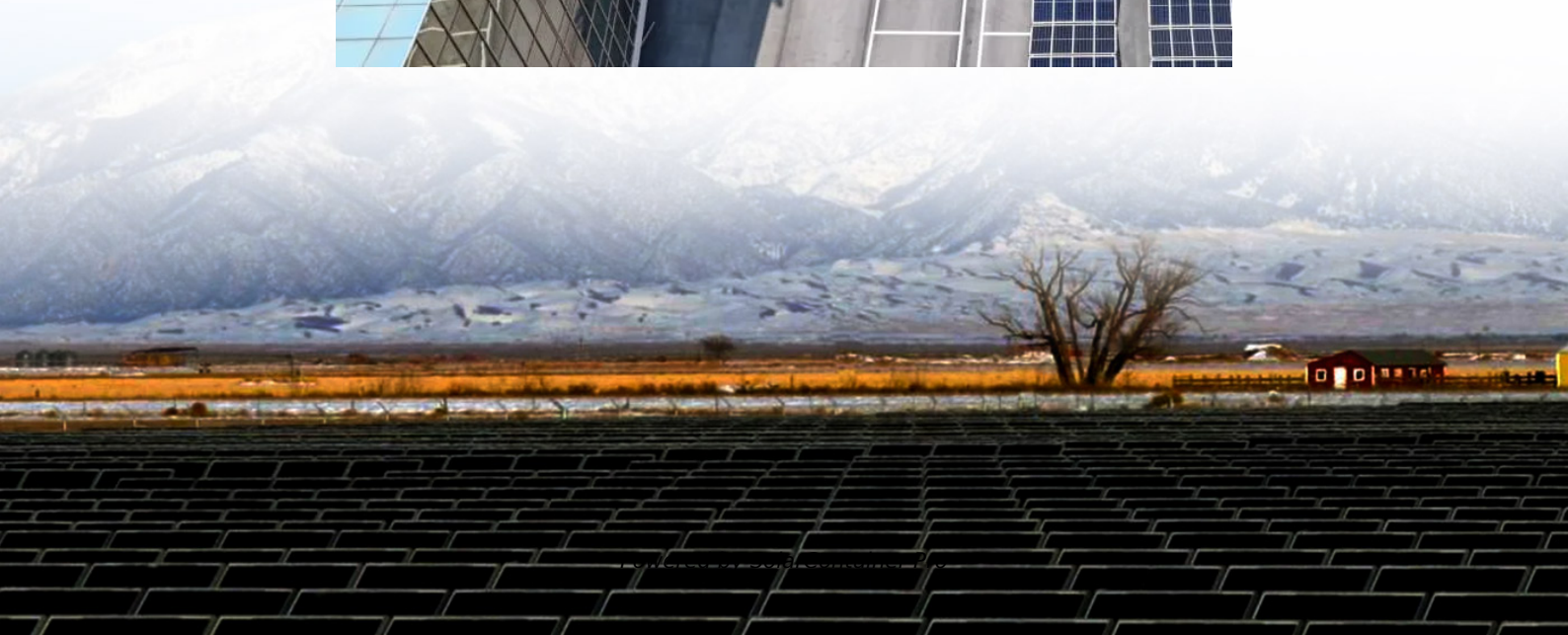
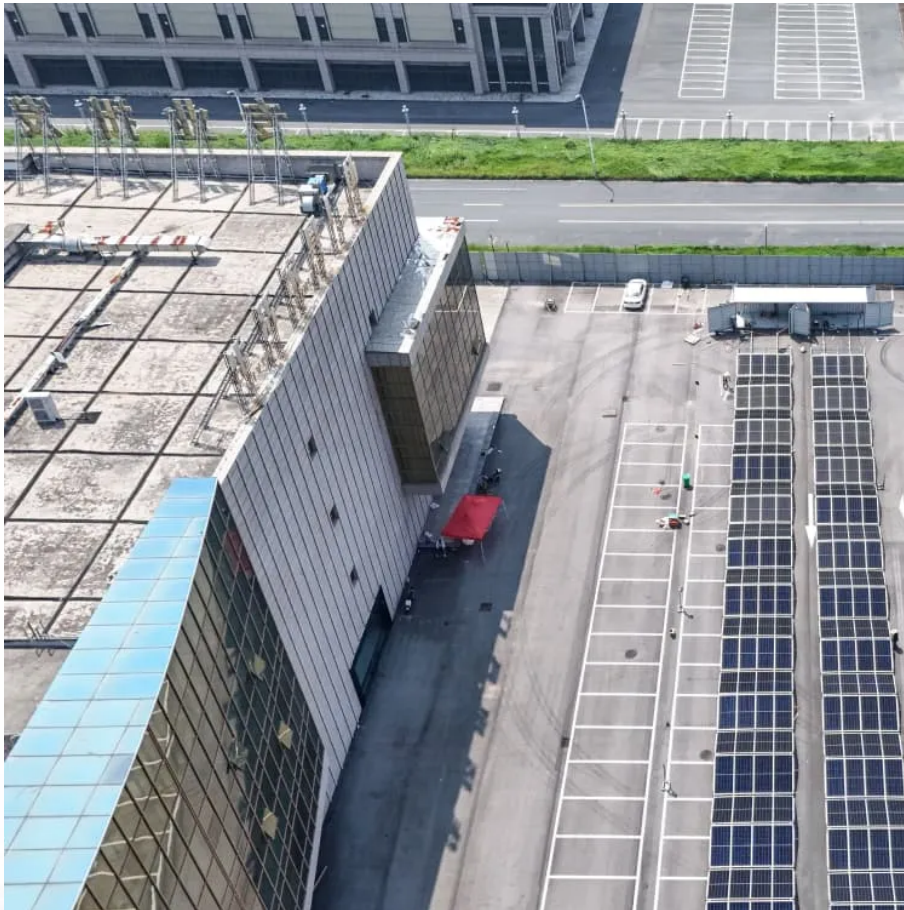


# **What is the input voltage of Huijue 10kw inverter**





## Overview

---

How much power does an inverter need?

It's important to note what this means: In order for an inverter to put out the rated amount of power, it will need to have a power input that exceeds the output. For example, an inverter with a rated output power of 5,000 W and a peak efficiency of 95% requires an input power of 5,263 W to operate at full power.

How do you classify an inverter based on its power output?

Using the CEC efficiency, the input power to the inverter must be  $P_{IN} = P_{OUT} / \text{CEC Efficiency} = 3,300 \text{ W} / 0.945 = 3,492 \text{ W}$ . Inverters can be classed according to their power output. The following information is not set in stone, but it gives you an idea of the classifications and general power ranges associated with them.

What is the output voltage of a grid-tie inverter?

For inverters designed for residential use, the output voltage is 120 V or 240 V at 60 Hz for North America. It is 230 V at 50 Hz for many other countries. **Peak Efficiency** The peak efficiency is the highest efficiency that the inverter can achieve. Most grid-tie inverters have peak efficiencies above 90%.

What are inverter specifications?

Specifications provide the values of operating parameters for a given inverter. Common specifications are discussed below. Some or all of the specifications usually appear on the inverter data sheet. **Maximum AC output power** This is the maximum power the inverter can supply to a load on a steady basis at a specified output voltage.

What is an example of a power inverter?

Common examples are refrigerators, air-conditioning units, and pumps. **AC output voltage** This value indicates to which utility voltages the inverter can



connect. For inverters designed for residential use, the output voltage is 120 V or 240 V at 60 Hz for North America. It is 230 V at 50 Hz for many other countries.



## What is the input voltage of Huijue 10kw inverter

---



### [1.5kw-10kw HJ-HIH48 Hybrid Solar Inverter](#)

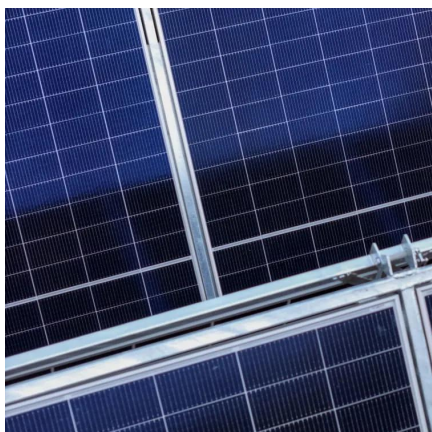
The HJ-HIH48 series is the next-generation hybrid inverter solution for intelligent, efficient, and economical solar energy storage and use. Be it residential, commercial, or off-grid areas, it ...

[WhatsApp](#)

### [Single-phase energy storage inverter \(hybrid grid\)](#)

Single-phase energy storage inverter (hybrid grid) Type : Single-phase Inverter Power : 10KW Model : HJ-HIH4814S This inverter features a conversion efficiency of up to 98%, supports ...

[WhatsApp](#)



### [10-12kW Three-Phase Low Voltage Off-Grid Inverter](#)

The 10-12 kW three-phase low-voltage off-grid inverter is specifically designed for households or small businesses with high-power appliances, capable of outputting three-phase 400-volt AC ...

[WhatsApp](#)

### **Grid Tie 6KW Inverter , Maximize Solar Efficiency for Rooftop ...**

The Huijue Grid Tie 6KW Inverter is designed for high performances, suitable for residential and commercial solar power systems. Engineered for



maximum efficiency up to 98.4% with dual ...

[WhatsApp](#)



### [Single-phase energy storage inverter \(hybrid grid\)](#)

This inverter features a conversion efficiency of up to 98%, supports 160% DC overprovisioning and 200% emergency output power, is compatible with high-current and high-power ...

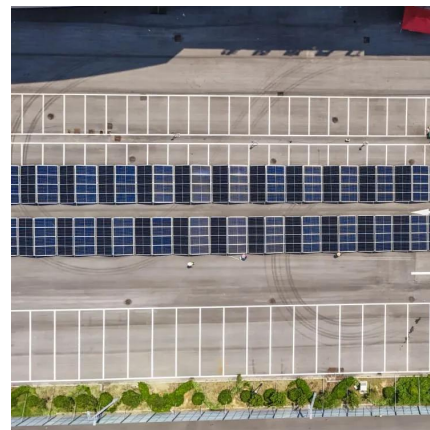
[WhatsApp](#)



### **10kW Solar Inverter Systems Explained , Huijue Group South Africa**

The secret sauce lies in the voltage window - most quality 10kW inverters can handle 600-800VDC input, giving you that sweet spot between efficiency and safety. Take Huijue's HT ...

[WhatsApp](#)



### **INVT Solar XG 3-10kW Single-phase On-grid Solar Inverter**

XG3-10kW single-phase on-grid solar inverter is a string inverter developed by INVT Solar specifically for residential users, with small size, light weight, easy installation and ...

[WhatsApp](#)





## Contact Us

---

For catalog requests, pricing, or partnerships, please visit:  
<https://www.straighta.co.za>