

What is the flywheel energy storage mode





Overview

Flywheel energy storage (FES) works by accelerating a rotor () to a very high speed and maintaining the energy in the system as . When energy is extracted from the system, the flywheel's rotational speed is reduced as a consequence of the principle of ; adding energy to the system correspondingly results in an increase in the speed of th.

How does Flywheel energy storage work?

Flywheel energy storage (FES) works by accelerating a rotor (flywheel) to a very high speed and maintaining the energy in the system as rotational energy.

What is the difference between a flywheel and a battery storage system?

Flywheel Systems are more suited for applications that require rapid energy bursts, such as power grid stabilization, frequency regulation, and backup power for critical infrastructure. Battery Storage is typically a better choice for long-term energy storage, such as for renewable energy systems (solar or wind) or home energy storage.

What is flywheel technology?

We will explore its advantages, applications across various industries, and a comparative analysis with other storage methods. Flywheel technology is a sophisticated energy storage system that uses a spinning wheel to store mechanical energy as rotational energy. This system ensures high energy output and efficient recovery.

Why do flywheel energy storage systems have a high speed?

There are losses due to air friction and bearing in flywheel energy storage systems. These cause energy losses with self-discharge in the flywheel energy storage system. The high speeds have been achieved in the rotating body with the developments in the field of composite materials.

How does a flywheel work?



Here's a breakdown of the process: **Energy Absorption:** When there's surplus electricity, such as when the grid is overproducing energy, the system uses that excess power to accelerate the flywheel. This energy is stored as kinetic energy, much like how the figure skater speeds up their spin by pulling in their arms.

What is flywheel energy storage system topology?

Flywheel energy storage system topology. Another method used in flywheel energy storage systems is to store energy with high speed. In this method the rotating object is rotated up to 100,000 rpm . The rotating object weight is low in this method. This method is used in small applications in terms of volume and weight.



What is the flywheel energy storage mode



Technology: Flywheel Energy Storage

FESS is used for short-time storage and typically offered with a charging/discharging duration between 20 seconds and 20 minutes. However, one 4-hour duration system is available on the ...

[WhatsApp](#)

Chinese scientists extend lifecycle of flywheel energy storage

Flywheel energy storage, also known as kinetic energy storage, is a form of mechanical energy storage that is a suitable to achieve the smooth operation of machines and ...

[WhatsApp](#)



Flywheel energy storage

OverviewMain componentsPhysical characteristicsApplicationsComparison to electric batteriesSee alsoFurther readingExternal links

Flywheel energy storage (FES) works by accelerating a rotor (flywheel) to a very high speed and maintaining the energy in the system as rotational energy. When energy is extracted from the system, the flywheel's rotational speed is reduced as a consequence of the principle of conservation of energy; adding energy to the system correspondingly results in an increase in the speed of th...

[WhatsApp](#)



Flywheel Energy Storage System: What Is It and How Does It ...

In a flywheel energy storage system, electrical energy is used to spin a flywheel at incredibly high speeds. The flywheel, made of durable materials like composite carbon fiber, stores energy in ...

[WhatsApp](#)



Strength Analysis of Carbon Fiber Composite Flywheel Energy Storage

The dimensions of the flywheel energy storage device for power frequency regulation using carbon fiber composite materials, as described in reference [24], simplify the ...

[WhatsApp](#)

Control of a High Speed Flywheel System for Energy Storage ...

A flywheel energy storage system is an alternative technology that is being considered for future space missions. Flywheels offer the advantage of a longer lifetime, higher efficiency and a ...

[WhatsApp](#)



Flywheel Energy Storage: A Comprehensive Guide

Flywheel energy storage (FES) is a kinetic energy storage technology that utilizes a rotating flywheel to store energy. The flywheel is connected to an electrical machine that acts ...

[WhatsApp](#)



Flywheel Energy Storage: The Key To Sustainable Energy Solutions

Flywheel energy storage is a promising technology that can provide fast response times to changes in power demand, with longer lifespan and higher efficiency compared to other ...

[WhatsApp](#)



[What is the flywheel energy storage mode? . NenPower](#)

At its core, flywheel energy storage operates by converting electric energy into kinetic energy. This transformation occurs via a rotor, which spins at high speeds, effectively ...

[WhatsApp](#)

A review of control strategies for flywheel energy storage system ...

The flywheel energy storage system (FESS) offers a fast dynamic response, high power and energy densities, high efficiency, good reliability, long lifetime and low maintenance ...

[WhatsApp](#)



A review of flywheel energy storage systems: state of the art and

In this paper, state-of-the-art and future opportunities for flywheel energy storage systems are reviewed. The FESS technology is an interdisciplinary, complex subject that ...

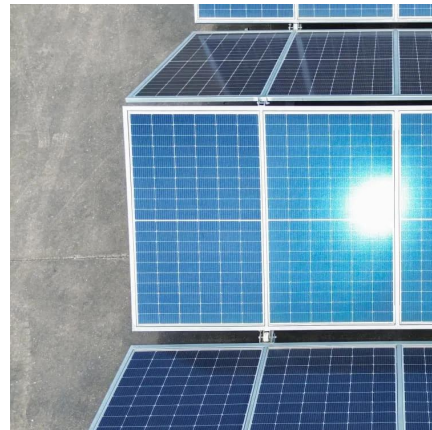
[WhatsApp](#)



[Modelling and Demonstration of Flywheel Energy Storage](#)

An energy storage system in the micro-grid improves the system stability and power quality by either absorbing or injecting power. It increases flexibility in the electrical system by ...

[WhatsApp](#)



Contact Us

For catalog requests, pricing, or partnerships, please visit:
<https://www.straighta.co.za>