

What is the capacity of a portable emergency power supply





Overview

Why should you choose a portable power station?

A portable power station with a higher capacity will be able to store more energy and therefore power devices for a longer period of time. This number stipulates the maximum number of watts the power station can generate for one hour. For example, a 1,000-watt power station will charge a device that requires 1,000 watts for one hour.

What is an emergency power supply?

An emergency power supply is a system designed to deliver electricity when the main power source fails. □ Provides backup electricity during outages to maintain safety and operations □ Supports essential systems like alarms, elevators, and life-support equipment □ Uses generators, batteries, or UPS systems to ensure uninterrupted power.

What is the output wattage of a portable power station?

The output wattage of the portable power station refers to the maximum amount of power the power station can output at any given time. It's essential to ensure that the output wattage is greater than the highest wattage of any device you plan to power.

What are the different types of portable power stations?

Regardless of the energy source, portable power stations come in various sizes. These sizes range from small models to support small electrical devices to heavy-duty models to keep your devices running for several hours. HOW DOES A PORTABLE POWER STATION WORK?

A portable power station stores electricity within a battery.

How long does a portable power station last?

A portable power station's lifespan depends on the type of battery inside. Most



new portable power stations, including all the models we recommend here, feature LiFePO4 battery technology, which lasts far longer than older lithium-ion technology. How much more?

LiFePo4 power stations will last for more than 3,000 charge cycles, or about 10 years.

What is a portable power station?

A portable power station is simply a large-built battery that you can charge and then transport to different locations for use. It holds electrical energy and allows you the privilege to energize your devices when you are out of reach with the conventional power socket.



What is the capacity of a portable emergency power supply



What Size Portable Power Station Do I Need: Expert Tips Revealed

4 days ago · Choosing the right capacity for a portable power station can feel like a puzzle. You want to make sure you have enough power to keep your devices running without going ...

[WhatsApp](#)

The 3 Best Portable Power Stations of 2025 , Reviews by Wirecutter

Each model is required to have a rated battery capacity of at least 300 watt-hours (Wh), which allows you to run a 300-watt appliance for one hour. Each model needs a max ...

[WhatsApp](#)



10 Best Power Stations for Emergency Preparedness: Stay ...

The Anker SOLIX F2000 Portable Power Station stands out as an ideal choice for individuals and families seeking reliable backup power during emergencies, thanks to its ...

[WhatsApp](#)

The best home battery and backup systems of 2025: Expert tested

We tested and researched the best home battery and backup systems from brands like EcoFlow and Tesla to help you find the right fit to keep



you safe during outages or reduce ...

[WhatsApp](#)



Complete Guide To Portable Power Supply: Pros& Cons, How to ...

A portable power supply is a large-capacity power supply that can store electric energy in portable power stations. These portable power stations are ideal for use inside or ...

[WhatsApp](#)



How to Select the Right Size Portable Power Station For Your ...

To select the correct portable power station for your needs, the capacity should be greater than the total wattage required. However, it's important to note that the capacity of the portable ...

[WhatsApp](#)



[FEMA P-1019 Emergency Power Systems for Critical ...](#)

Chapter 6 provides design considerations and best practices for emergency power systems in new critical facilities, including how to decide on what functions in a critical facility ...

[WhatsApp](#)

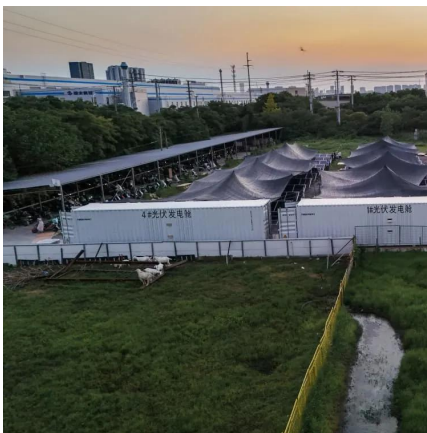




Emergency Electricity Source Explained: What Is, Types, How

What Are The Benefits of Emergency Electricity Source? Traditionally, generators propelled by gasoline, propane, diesel fuel, and renewable energy provide emergency ...

[WhatsApp](#)



[8 Best Portable Power Stations \(2025\): Power Capacity](#)

Figure out how much power you need. The capacity is listed in watt-hours (Wh) or sometimes kilowatt-hours (kWh). If you think about the devices you want to run and how long ...

[WhatsApp](#)

[MARBERO Portable Power Station 88Wh Camping Lithium ...](#)

The two AC output ports will power home appliances, such as small TVs, game consoles, projectors, etc. BRIGHT LIGHTS: With three levels of brightness, the portable power bank can ...

[WhatsApp](#)



[Emergency Power Supply: Backup Electricity Explained](#)

Portable supplies are a versatile and eco-friendly option for emergency power supply. A portable generating station is a large battery that can be charged using solar power panels, a wall ...

[WhatsApp](#)



Contact Us

For catalog requests, pricing, or partnerships, please visit:
<https://www.straighta.co.za>