

What is the best base station communication frequency





Overview

What frequency should a ham radio base station use?

Generally, frequencies below 1GHz are preferable for amateur ham radio base stations because it can penetrate through the obstacles like buildings without reducing their intensity. So if you want to use it in densely populated areas, you need to consider the frequencies to guarantee communication efficiency.

Are base stations better than handheld ham radios?

On the other hand, a base stations offer several benefits over handheld ham radios. Here are a few advantages of using a ham radio base station: Base stations have higher power output, allowing for greater communication range. This means you can reach other amateur radio operators who may be far away.

Can a ham radio base station be used for emergency communication?

Yes, ham radio base stations can be used for emergency communication as they offer greater power and range compared to handheld radios. They are commonly utilized by amateur radio operators during emergencies and natural disasters. Can I connect my ham radio base station to a computer?

.

Which frequency band is best for a base station?

Mid-frequency bands (1 GHz – 6 GHz) provide a balance of coverage and speed. High-frequency bands (above 6 GHz) allow for higher data rates but shorter range. Choosing the appropriate frequency band based on these characteristics can optimize your base station performance.

What is the Best ham radio base station?

ICOM 7300 is one of the top-quality ham radio base stations you may find in the market. The most marvelous feature of this model is that it has a 4.3-inch



touch-screen waterfall display that works with spectrum scope, making it easy to find out the weak signals and adjust resolution bandwidth.

How many channels does a mobile radio base station have?

The mobile radio base station features up to two hundred channels giving you a wide variety to choose from, and given that it has a powerful output of 50W, this makes it a good bargain. The display synchronization function also makes it a great choice since it can simultaneously showcase two channels, including the names and frequencies.



What is the best base station communication frequency



Top 5 Ham Radio Antennas for Maximum Range and Clarity: ...

Choosing the right ham radio antenna can enhance both the range and the clarity of transmissions. This article will introduce the top five ham radio antennas that stand out in ...

[WhatsApp](#)

[10 Best GMRS Base Station Radio 2025: Most Powerful](#)

When selecting a base station antenna, understanding the frequency range is crucial for achieving optimal network coverage. This article will explore how to choose the appropriate frequency ...

[WhatsApp](#)



10 Best Ham Radio Base Station For Long Range Communication

Frequency: Lower frequency below 1 GHZ is always preferable for amateur ham radio base station operation. This is because it has a short wavelength which can quickly propagate ...

[WhatsApp](#)

[The Range of Ham Radio: A Guide to How Far You Can Talk](#)

If you're considering getting your ham radio license or you're trying to choose a radio service that's right for you, the answer is simple -



amateur radio, also known as ham radio - has the ...

[WhatsApp](#)



7 Best Ham Radio Base Stations 2025 - Ham Radio Transceiver

Whether you are a serious radio fan or a beginner, you won't be disappointed. The first feature we like about this model is that It receives frequencies ranging from 0.030MHz to ...

[WhatsApp](#)



10 Best Ham Radio Base Station For Long Range Communication

I've read Commercial (30-50) will yield 50-100 miles, and I've read 2m SSB would do this and more. 10 and 6 SSB would probably not get out that far. Also read that a 2m SSB ...

[WhatsApp](#)



[Choosing the Optimal Channels for Base Stations: A ...](#)

In this extensive article, we explore the various factors that influence channel selection for base stations, the impact of the wireless environment, and best practices for ...

[WhatsApp](#)

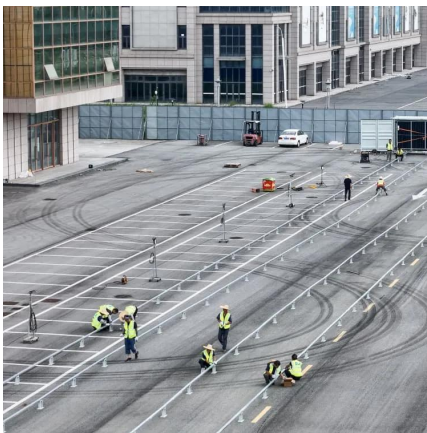




[Base Station Antenna Frequency Selection](#)

When selecting a base station antenna, understanding the frequency range is crucial for achieving optimal network coverage. This article will explore how to choose the appropriate frequency ...

[WhatsApp](#)



Best Ham Radio Base Stations Of 2025 - Review and Comparison

Keep reading to get an unbiased analysis that will help you narrow down your ham radio base station selection based on key parameters, such as sound quality, transmission ...

[WhatsApp](#)

Opinion-best freq for consistent, reliable comments 0-100 miles??

I've read Commercial (30-50) will yield 50-100 miles, and I've read 2m SSB would do this and more. 10 and 6 SSB would probably not get out that far. Also read that a 2m SSB ...

[WhatsApp](#)



Contact Us

For catalog requests, pricing, or partnerships, please visit:
<https://www.straightta.co.za>