

# What is the auxiliary voltage of the inverter





## Overview

---

What is the AC output voltage of a power inverter?

The AC output voltage of a power inverter is often regulated to be the same as the grid line voltage, typically 120 or 240 VAC at the distribution level, even when there are changes in the load that the inverter is driving. This allows the inverter to power numerous devices designed for standard line power.

What is auxiliary supply & auxiliary voltages?

What is auxiliary supply & auxiliary voltages ?

Which circuit are you referring to. Usually, an auxiliary supply is a power supply that provides an auxiliary voltage. An example will clear this up. Say you have a switching circuit with rating 220VAC input and 12VDC output.

How much power does an inverter need?

It's important to note what this means: In order for an inverter to put out the rated amount of power, it will need to have a power input that exceeds the output. For example, an inverter with a rated output power of 5,000 W and a peak efficiency of 95% requires an input power of 5,263 W to operate at full power.

How do you classify an inverter based on its power output?

Using the CEC efficiency, the input power to the inverter must be  $P_{IN} = P_{OUT} / \text{CEC Efficiency} = 3,300 \text{ W} / 0.945 = 3,492 \text{ W}$ . Inverters can be classed according to their power output. The following information is not set in stone, but it gives you an idea of the classifications and general power ranges associated with them.

What voltage is a 12V inverter?

Inverters come in various configurations, each designed for specific power systems. Common rated input voltages include 12V, 24V, and 48V. The choice



depends on the application, the size of the power system, and the available power source. A 12V inverter is commonly used for smaller applications, such as in vehicles or small off-grid setups.

What is an example of an auxiliary power supply?

Another good example of an auxiliary supply exists in the TV power supply. There is the main power supply which powers the TV and the related circuitry. Then, there is the auxiliary power supply, which is a lower power supply, that is always active and is used to receive the signal from the remote to turn the system on.



## What is the auxiliary voltage of the inverter

---



### [Inverter Specifications and Data Sheet](#)

This is also known as the surge power; it is the maximum power that an inverter can supply for a short time. For example, some appliances with electric motors require a much higher power on ...

[WhatsApp](#)

### Considerations for auxiliary flyback power supplies (Rev. A)

Designed to provide power to the control, signal-chain, sensing and gate-driver devices, the auxiliary power supply typically comes in the form of an isolated flyback controller that converts ...

[WhatsApp](#)



### Understanding Inverter Voltage: Definition, Functions, Type, and ...

What is the Inverter Voltage? Inverter voltage is a voltage generated by the inverter after several electrons that converts a series of direct current (DC) into alternating ...

[WhatsApp](#)

### [What is auxiliary supply & auxiliary voltages](#)

The controller and driver sections of this circuit also need to be powered. 12VDC output is your main output and you have another output (may or may not be 12VDC) that is the ...



[WhatsApp](#)



### **Inverter Transformers for Photovoltaic (PV) power plants: ...**

In this paper, the author describes the key parameters to be considered for the selection of inverter transformers, along with various recommendations based on lessons learnt. This ...

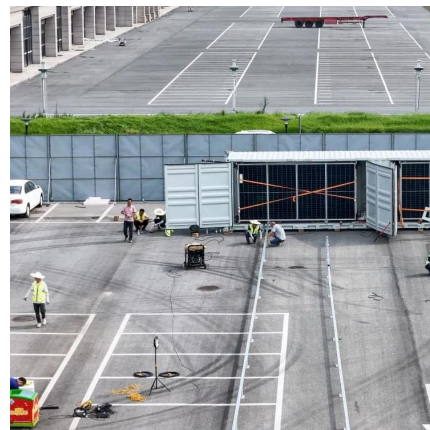
[WhatsApp](#)



### DESIGN AND DEVELOPMENT OF AUXILIARY POWER ...

Control IC UCx84x. Auxiliary Power Supply is a vital part in an Inverter. It powers the control, signal acquisition and conditioning units of an Inverter. A Digital Signal Processor acts as the ...

[WhatsApp](#)



### "power Inverters" . "power Inverters" at Temu(TM)

Only Today, Enjoy "power Inverters" Up To 90% Off Your Purchase. Hurry & Shop Now. Come and check "power Inverters" at a low price, you'd never want to miss it.

[WhatsApp](#)







## [Chapter 7 Homework 1 Flashcards , Quizlet](#)

Technician A says the high-voltage battery is connected to the auxiliary battery through a set of high-voltage relays or contactors. Technician B says the high-voltage system shares the ...

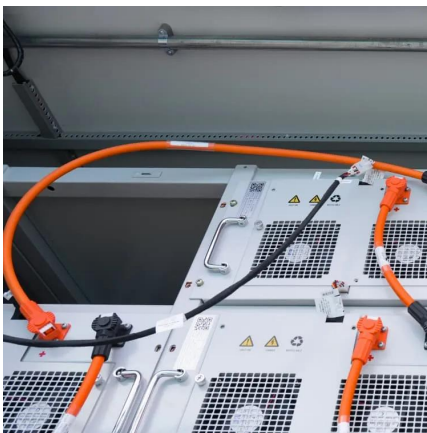
[WhatsApp](#)



## **Understanding the Auxiliary Voltage of Inverters Key Applications ...**

What Is the Auxiliary Voltage of an Inverter? The auxiliary voltage of an inverter refers to the secondary power supply required to operate the inverter's control circuits, cooling systems, or ...

[WhatsApp](#)



## **Understanding the Auxiliary Voltage of Inverters Key Applications ...**

The auxiliary voltage of an inverter refers to the secondary power supply required to operate the inverter's control circuits, cooling systems, or communication modules. Unlike the main output ...

[WhatsApp](#)



## **Contact Us**

For catalog requests, pricing, or partnerships, please visit:  
<https://www.straightta.co.za>