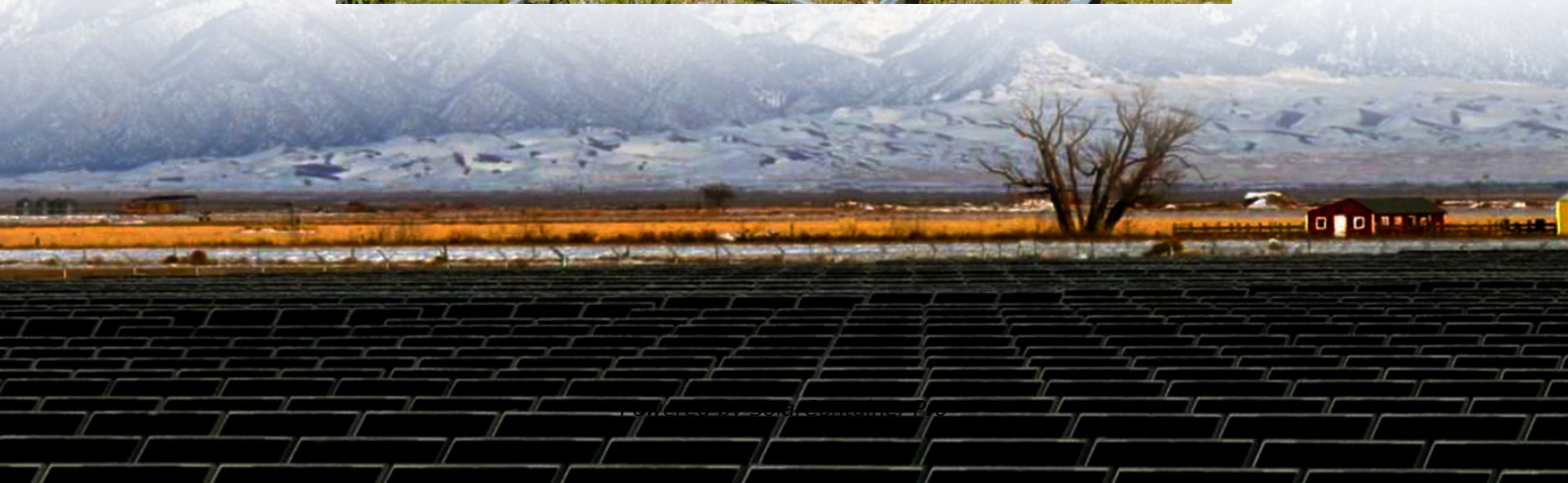


What is the appropriate current for the base station power supply





Overview

How do I choose the right size power supply for my Radio?

To the average layperson, all this sounds overly complicated. So to simplify the process, here are some general guidelines for choosing the right size power supply for your radio. Use the manufacturer's amp rating of the radio as the rule. Use the maximum, or peak load rating of the radio, not the standby or typical draw.

How many amps should a power supply have?

If connecting multiple radios, add up the total amps of all the radios during peak load combined. For example, let's say you have a 50 watt radio and the maximum draw is listed at 10 amps. Buying a power supply advertised with a peak load of 10 amps might still be a bad move. First, power supplies have two amp ratings: continuous and maximum.

Can a mobile radio be used as a base station?

Of course, there is a little matter of power. A mobile radio is specifically designed to operate on DC power from a vehicle. It has no internal power transformer or inverter of its own, so it isn't made to plug into the AC wall outlet of a home or office building. In that case, how do you power a mobile radio for use as a base station?

That's easy.

Do mobile radios need a power supply?

Mobile radios have different power requirements, and power supplies have different power ratings. Choose the correct power supply for your radio, and you may have years of clean power with no noisy interference and uninterrupted service. Choose the wrong one, and your radio may not be able to transmit or even stay on from the start.

How much power does a PSU need during a quiescent period?



During quiescent periods—typically 5 ms to 100 ms—the PSU must minimize all load power with the basic functions of the antenna unit remaining active. It also must be able to ramp up to full power whenever the antenna wants to check for any active users within its range.

Should I buy a power supply with a peak load of 10 amps?

Buying a power supply advertised with a peak load of 10 amps might still be a bad move. First, power supplies have two amp ratings: continuous and maximum. The continuous rating is usually the number that you want to look for. Also consider the load.



What is the appropriate current for the base station power supply



Optimizing the power supply design for communication base stations

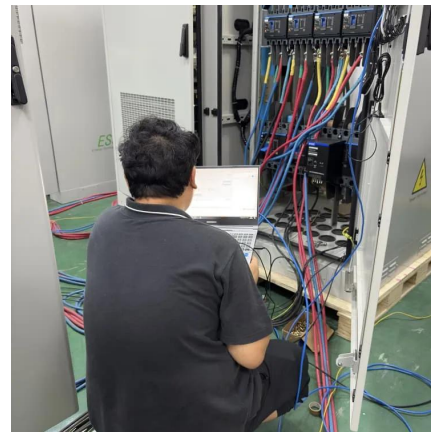
Comprehensively evaluate various factors and select the most suitable power system design scheme to ensure the stable and reliable operation of the base station.

[WhatsApp](#)

[Replacement Headset Power Adapter for the Valve Index](#)

Worst case look up the "Belker 36W Universal" as you can achieve the following 12v 2.5 amp safely with a 3.5mm x 1.35mm connector. Hey I just stumbled across this and am ...

[WhatsApp](#)



what kind of power supplies do you guys use for base station

That radio should run from 11.73v to 15.87v but at 12v and 5 amps, you'll probably put too much demand on that little power supply. I use a switching power supply similar to this ...

[WhatsApp](#)



[Building better power supplies for 5G base stations](#)

Building better power supplies for 5G base stations Authored by: Alessandro Pevere, and Francesco Di Domenico, both at Infineon



Technologies Infineon Technologies - Technical ...

[WhatsApp](#)



Why don't base stations come with built-in power supplies? : r

But why aren't there any base stations with built-in power supplies? It just adds an additional hassle to buying a base station, and takes up more room. Not to mention that it adds to the ...

[WhatsApp](#)

5G macro base station power supply design strategy and ...

"In terms of primary power supply, we see a very obvious trend of requiring high efficiency and high power density. Now the efficiency of power supply should reach 97%, or ...

[WhatsApp](#)



The power supply design considerations for 5G base stations

During quiescent periods--typically 5 ms to 100 ms--the PSU must minimize all load power with the basic functions of the antenna unit remaining active. It also must be able to ...

[WhatsApp](#)



[Recommendations for Power Supply for HF Transceiver](#)

The modern HF rigs with built in power supplies, modern repeaters, base stations, etc. all use switching power supplies successfully. I'd recommend doing your own research on ...

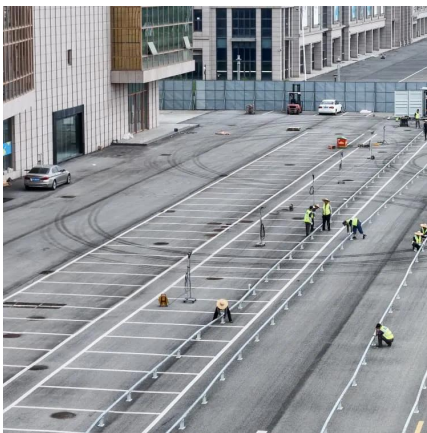
[WhatsApp](#)



[Base station power supply-Shenzhen Hongmei power ...](#)

With the development of mobile communication network services towards dataization and grouping, the development trend of mobile communication base stations is inevitably towards ...

[WhatsApp](#)



Selecting the Right Supplies for Powering 5G Base Stations

These tools simplify the task of selecting the right power management solutions for these devices and, thereby, provide an optimal power solution for 5G base stations components.

[WhatsApp](#)



[Choosing the right size power supply for your radio](#)

How do you power a mobile radio for use as a base station? Get a power supply. But this isn't a cut and dry, one-size-fits-all sort of thing. Here's how to choose the right power ...

[WhatsApp](#)



what kind of power supplies do you guys use for base station

That radio should run from 11.73v to 15.87v but at 12v and 5 amps, you'll probably put too much demand on that little power supply. I use a switching power supply similar to this one. There ...

[WhatsApp](#)



Selecting the Right Supplies for Powering 5G Base Stations

These tools simplify the task of selecting the right power management solutions for these devices and, thereby, provide an optimal power solution for 5G base stations components.

[WhatsApp](#)

Contact Us

For catalog requests, pricing, or partnerships, please visit:
<https://www.straighta.co.za>