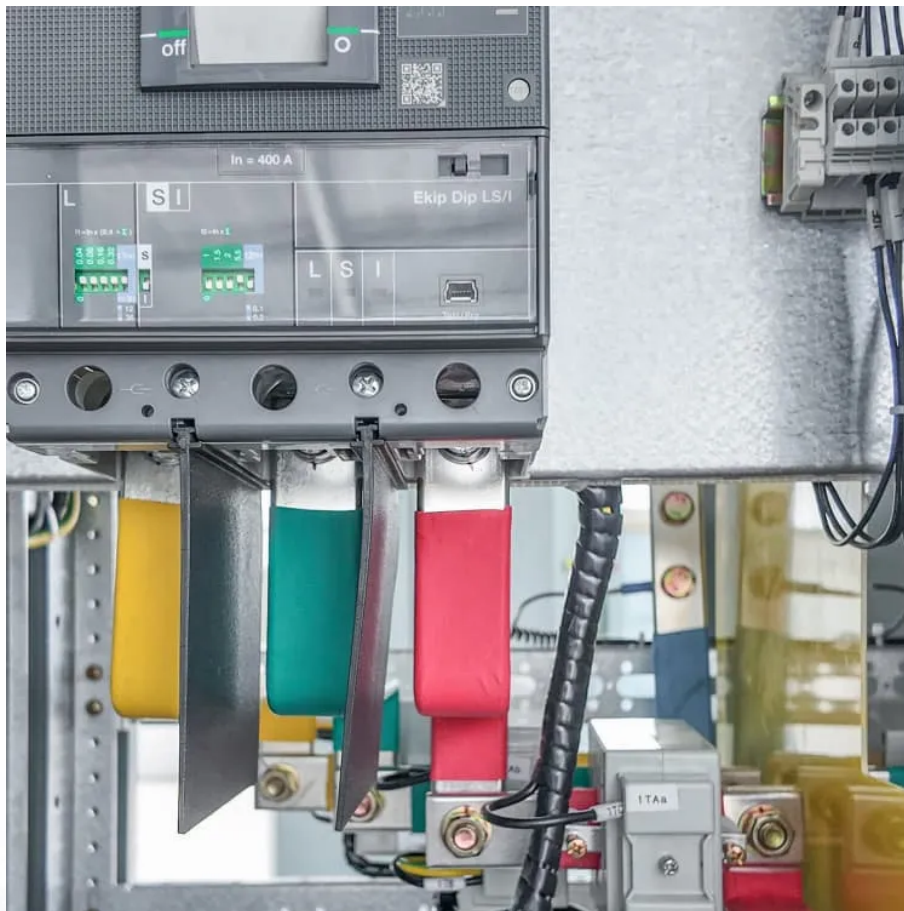


What is base station-free communication





Overview

A base transceiver station (BTS) or a baseband unit (BBU) is a piece of equipment that facilitates between (UE) and a network. UEs are devices like (handsets), phones, computers with connectivity, or antennas mounted on buildings or telecommunication towers. The network can be that of any of the wireless communication technologies like , , , or other .

The base station subsystem (BSS) is the section of a traditional which is responsible for handling traffic and signaling between a and the network switching subsystem. The BSS carries out of speech channels, allocation of radio channels to mobile phones, , and reception over the and many othe.

What is a base station in telecommunications?

In telecommunications, a base station is a fixed transceiver that is the main communication point for one or more wireless mobile client devices. A base station serves as a central connection point for a wireless device to communicate.

What is a base station in a cellular network?

A base station, also known as a cell site or cell tower, is an integral part of a cellular network. It serves as a central hub for communication between mobile devices and the network infrastructure. Here is a simplified explanation of how a base station works: 1.

How does a base station communicate with a client device?

Generally, if client devices wanted to communicate to each other, they would communicate both directly with the base station and do so by routing all traffic through it for transmission to another device. Base stations in cellular telephone networks are more commonly referred to as cell towers.

What is a base transceiver station?

One key component in mobile networks is the Base Transceiver Station, often abbreviated as BTS. But what is base transceiver station, and why is it so crucial to the functioning of our mobile phones?



At its core, a BTS is the equipment that facilitates wireless communication between the mobile network and your phone.

Why are base stations important in cellular communication?

Base stations are important in the cellular communication as it facilitate seamless communication between mobile devices and the network communication. The demand for efficient data transmission are increased as we are advancing towards new technologies such as 5G and other data intensive applications.

Is a base station a transmitter or broadcast point?

Base stations are generally a transceiver, capable of sending and receiving wireless signals; otherwise, if they only transmitted signals out, they would be considered a transmitter or broadcast point. A base station will have one or more radio frequency (RF) antennas to transmit and receive RF signals to other devices.



What is base station-free communication



[GSM Architecture: Understanding the 2G Network](#)

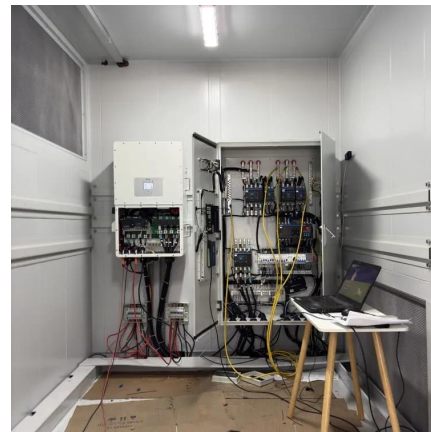
During the network entry process, the Mobile subscriber, or Mobile Station, is assigned one channel frequency and one time slot by the Base Station Subsystem. These resources ...

[WhatsApp](#)

Base Stations and Cell Towers: The Pillars of Mobile Connectivity

Base stations and cell towers are critical components of cellular communication systems, serving as the infrastructure that supports seamless mobile connectivity. These ...

[WhatsApp](#)



Base station subsystem

Overview
Base transceiver station
Base station controller
Packet control unit
BSS interfaces
See also

The base station subsystem (BSS) is the section of a traditional cellular telephone network which is responsible for handling traffic and signaling between a mobile phone and the network switching subsystem. The BSS carries out transcoding of speech channels, allocation of radio channels to mobile phones, paging, transmission and reception over the air interface and many othe...

[WhatsApp](#)





[What is Base Station \(BS\) . IGI Global](#)

The base station is at the upper level of the hierarchical WSN. It provides the communication link between the sensor network and the end-user. It contains the antennas and other equipment ...

[WhatsApp](#)



Understanding the Basics: What is a Base Transceiver Station?

At its core, a BTS is the equipment that facilitates wireless communication between the mobile network and your phone. This piece of technology is the backbone of ...

[WhatsApp](#)

Base transceiver station

A base transceiver station (BTS) or a baseband unit (BBU) is a piece of equipment that facilitates wireless communication between user equipment (UE) and a network. UEs are devices like mobile phones (handsets), WLL phones, computers with wireless Internet connectivity, or antennas mounted on buildings or telecommunication towers. The network can be that of any of the wireless communication technologies like GSM, CDMA, wireless local loop, Wi-Fi, WiMAX or other

[WhatsApp](#)



Contact Us

For catalog requests, pricing, or partnerships, please visit:
<https://www.straightta.co.za>