

# What is a power station in Congo Brazzaville





## Overview

---

Which power stations are in the Republic of the Congo?

This article lists power stations in the Republic of the Congo . / 2.93472°S 16.12778°E / -2.93472; 16.12778 ( Imboulou Hydroelectric Power Plant) / 3.89444°S 13.76444°E / -3.89444; 13.76444 ( Moukouloulou Hydroelectric Power Plant) / 4.30111°S 15.20667°E / -4.30111; 15.20667 ( Djoue Hydroelectric Power Plant).

What is Congo Brazzaville?

Congo Brazzaville, also known as the Republic of Congo or the 'Other Congo', is a country located near Kinshasa. It might not be as illustrious as the Democratic Republic of Congo, but it has a lot to offer and makes for a perfect follow-up to our DRC Tour.

What happened to Brazzaville power plant?

The complex is built on the Djoué River, a tributary of the majestic Congo. The water intake is built inside a gravity dam to retain water for Brazzaville's electricity demand. Since its construction in the 1950s, there have been many incidents. The most significant one occurred in April 2007, when the power plant was flooded.

What will a rehabilitation project do for Djoué - Republic of Congo?

This important rehabilitation project will give this strategic power plant a new lease on life and will supply the Congolese population with a clean source of renewable energy. Djoué - Republic of Congo: ANDRITZ HYDRO will modernize the water power plant.

How much hydropower does the Republic of Congo have?

The Republic of Congo has a technically feasible hydropower potential equivalent to 3,942 MW, of which only about 4% has been developed. A big part of it could be developed in the north of the country in the Plateaux



region, the Sangha region and Cuvettes and Cuvettes-Ouest. The south of the country also offers opportunities – almost 1,400 MW.

Why does Brazzaville have a water intake?

The water intake is built inside a gravity dam to retain water for Brazzaville's electricity demand. Since its construction in the 1950s, there have been many incidents. The most significant one occurred in April 2007, when the power plant was flooded. It has been out of operation since then.



## What is a power station in Congo Brazzaville

---



### Congo plans to double power generation to 1500MW by 2030

The Republic of the Congo has disclosed plans to double its power generation capacity to 1,500 MW by 2030 through the development of its renewable energy potential, the ...

[WhatsApp](#)

### Power plant profile: Centrale Electrique du Congo (CEC) Pointe ...

This information is drawn from GlobalData's Power Intelligence Center, which provides detailed profiles of over 170,000 active, planned and under construction power plants ...

[WhatsApp](#)



### Congo adds new CEC unit but falls short on grid infrastructure

President Denis Sassou Nguesso on 17 February inaugurated a 170MW third turbine at Eni's Centrale Electrique du Congo (CEC) gas-fired power plant at Côte Matève, in ...

[WhatsApp](#)

## [DOES CONGO BRAZZAVILLE HAVE HYDROPOWER](#)

What is the Nadarivatu hydroelectric power plant project? The Nadarivatu Hydroelectric Power Plant project involves the construction of a hydroelectric power plant on the upper reaches





of ...

[WhatsApp](#)



### [From Gas to Solar: Congo's Approach to Energy Security](#)

Congo's Gas Revolution Congo's national oil company Société Nationale des Pétroles du Congo is set to release its Gas Master Plan during the inaugural Congo Energy & ...

[WhatsApp](#)



### **Hydropower in the Republic of Congo**

Located less than 10 km from the capital, HPP Djoué supplies Brazzaville with electricity and is strategically important for electricity generation in the Republic of Congo. The complex is built ...

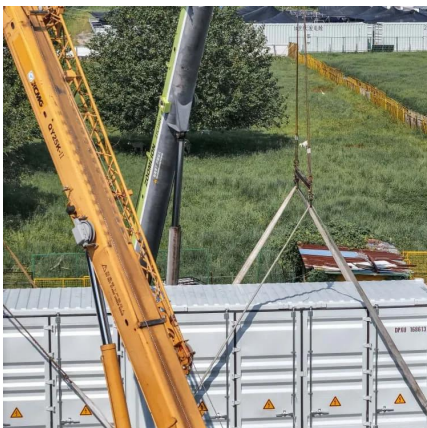
[WhatsApp](#)



### [Liouesso Hydroelectric Power Station](#)

The power station is located in the town of Ouessou, in Ouessou District, in the Sangha Region of the Republic of the Congo. Ouessou sits on the Sangha River, a tributary of the Congo River, ...

[WhatsApp](#)

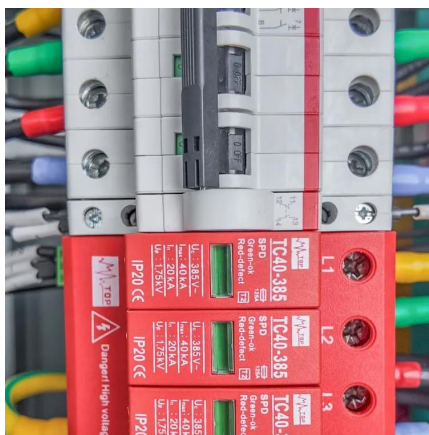




### Energy Capital & Power / Press release , Centrale Électrique du ...

With maintenance nearing completion on one of the three turbines at the 484 MW gas-fired Centrale Électrique du Congo (CEC) power plant, the Republic of Congo's state ...

[WhatsApp](#)



### Congo Ultra Green Corp brightens hopes of ailing solar panel firm

The document also plans to complete financing for the power transmission line and transformer station in Maloukou. Maloukou was chosen because it hosts an industrial and ...

[WhatsApp](#)

### Energy Capital & Power / Press release , Centrale Électrique du Congo

With maintenance nearing completion on one of the three turbines at the 484 MW gas-fired Centrale Électrique du Congo (CEC) power plant, the Republic of Congo's state ...

[WhatsApp](#)



### [WHY DID ENI BUILD TWO POWER PLANTS IN CONGO BRAZZAVILLE](#)

It is a configuration of two water reservoirs at different elevations that can generate power as water moves down from one to the other (discharge), passing through a turbine.

[WhatsApp](#)



## Contact Us

---

For catalog requests, pricing, or partnerships, please visit:  
<https://www.straighta.co.za>