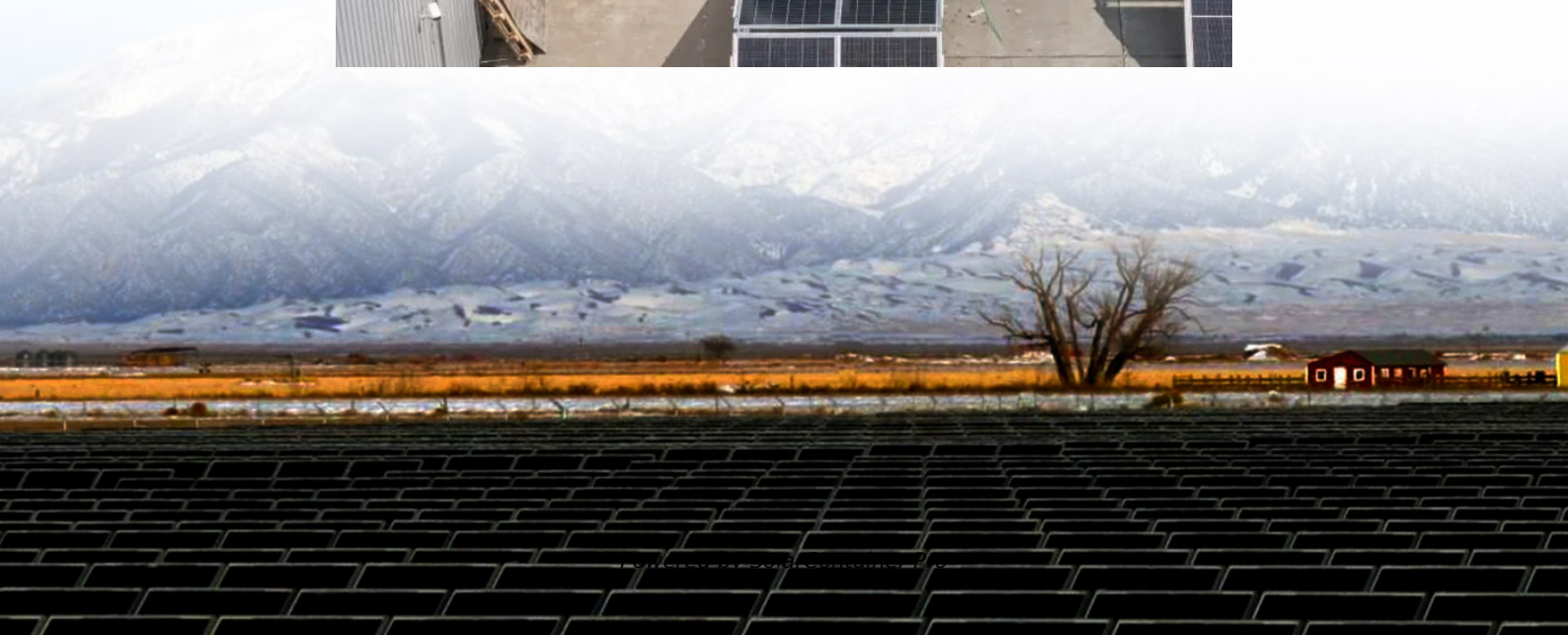


# **What is a fully automatic double-glass module**





## Overview

---

What is a dual-glass module?

Dual-glass type modules (also called double glass or glass-glass) are made up of two glass surfaces, on the front and on the rear with a thickness of 2.0 mm each. Some manufacturers, in order to reduce the weight of the modules, have opted for a thickness of 1.6 mm. DualSun has chosen to stay with a thickness of 2.0 mm for reasons explained below.

What is a dual glass solar panel?

In contrast, dual-glass solar panels replace the backsheet with a second layer of tempered glass on the rear side of the module. The combined strength of using two sheets of glass makes the solar panel less prone to becoming deformed or for microcracks to form in the cells.

Why are double glass modules symmetrical?

Mechanical constraints on cells: the fact that the structure of the double glass modules is symmetrical implies that the cells are located on a so-called neutral line, the upper part of the module being in compression during a downward mechanical load and the lower glass surface being in tension.

Are double-glass solar modules reactive or non-reactive?

Furthermore, comparing to plastic backsheets (the back material of single-glass solar module) which are reactive, glass is non-reactive. This means that the whole structure of Raytech double-glass solar modules (two layers of glass and one layer of solar cells in the middle) are highly resistant to chemical reactions such as corrosion as a whole.

What is the difference between Raytech double glass solar modules?

Whereas for Raytech double-glass solar modules, with the increased strength brought by two layers of glass, a lot less deformation will happen in the solar cells, the possibility of microcracks formed on the solar cells will decrease



significantly.

Why is double glass important for solar panels?

Double Glass is especially important in photovoltaic facilities such as solar power plants and for the expected long service life of modules. Why is solar double glass more durable?

Why is double glass used in solar panels?



## What is a fully automatic double-glass module

---



### What are the differences between single-glass and double-glass ...

This means that the whole structure of Raytech double-glass solar modules (two layers of glass and one layer of solar cells in the middle) are highly resistant to chemical ...

[WhatsApp](#)

### About the advantages of double-sided double-glass modules and ...

Solar panels that can generate electricity on both sides are called bifacial modules, and are generally in the form of double-glazing. This article compiles the advantages of double-sided ...

[WhatsApp](#)



### DAH Solar Full-Screen Double-Glass PV Module: The Preferred ...

It is the first double-glass PV module in the industry that has no frames on all four sides of the front. The global patent no-frame structure design allows the module to be anti-dust and no ...

[WhatsApp](#)

### N?-????-HD108N-11BB-410-425-182-A

N-type High Efficiency Mono Black Silicon Half-Cell Double Glass Module \*STC: Irradiance 1000 W/m<sup>2</sup>, Cell Temperature 25°C, AM1.5 The data above is for reference only and the ...



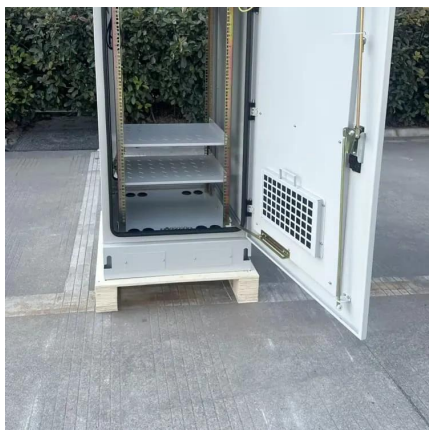
[WhatsApp](#)



### Double glass frameless module with hook automatic assembly ...

An automatic assembly device, frameless technology, applied in workpiece clamping devices, manufacturing tools, etc., can solve the problems of difficult fitting of reserved holes, easy to ...

[WhatsApp](#)



### What is the difference between single-glass and double-glass

Save Money and Improve Energy Efficiency with Double-Glass PV Modules, and take the First Step towards Sustainable Living. With Joey from MaySun Solar to discover the advantages of

[WhatsApp](#)



### Why Dual-Glass is the best solar panel technology for rooftops

In contrast, dual-glass solar panels replace the backsheet with a second layer of tempered glass on the rear side of the module. The combined strength of using two sheets of ...

[WhatsApp](#)





## Second Glass Loading & Placement Machine , Solar Panel ...

A second glass loading and placement machine is a high-precision dual-glass panel making machine. The loading machine can adapt to different specifications of glass and has a ...

[WhatsApp](#)



## [Double-glass Solar Module Machines , PV Module Assembly](#)

Double-glass solar module machines include second glass loading & placement machines and automatic edge taping machines. They are mainly used to load and place dual glasses and for ...

[WhatsApp](#)

## What is the Double Glass (Dual Glass) Photovoltaic Solar Panel?

Glass-glass module structures (Dual Glass or Double Glass) is a technology that uses a glass layer on the back of the modules instead of the traditional polymer backsheet.

[WhatsApp](#)



## Single-glass versus double-glass: a deep dive into module ...

Double-glass modules, with their performance in the face of salt mist, high temperatures and high humidity, have won the market's favour. However, this trend is not ...

[WhatsApp](#)



### **What is the Double Glass(Dual Glass) Photovoltaic Solar Panel?**

What is the Double Glass Photovoltaic Solar Panel? Glass-glass module structures (Dual Glass or Double Glass) is a technology that uses a glass layer on the back of ...

[WhatsApp](#)



### **What is the difference between single-glass and double-glass**

Save Money and Improve Energy Efficiency with Double-Glass PV Modules, and take the First Step towards Sustainable Living. With Joey from MaySun Solar to discover the advantages of

[WhatsApp](#)

## **Contact Us**

For catalog requests, pricing, or partnerships, please visit:  
<https://www.straighta.co.za>