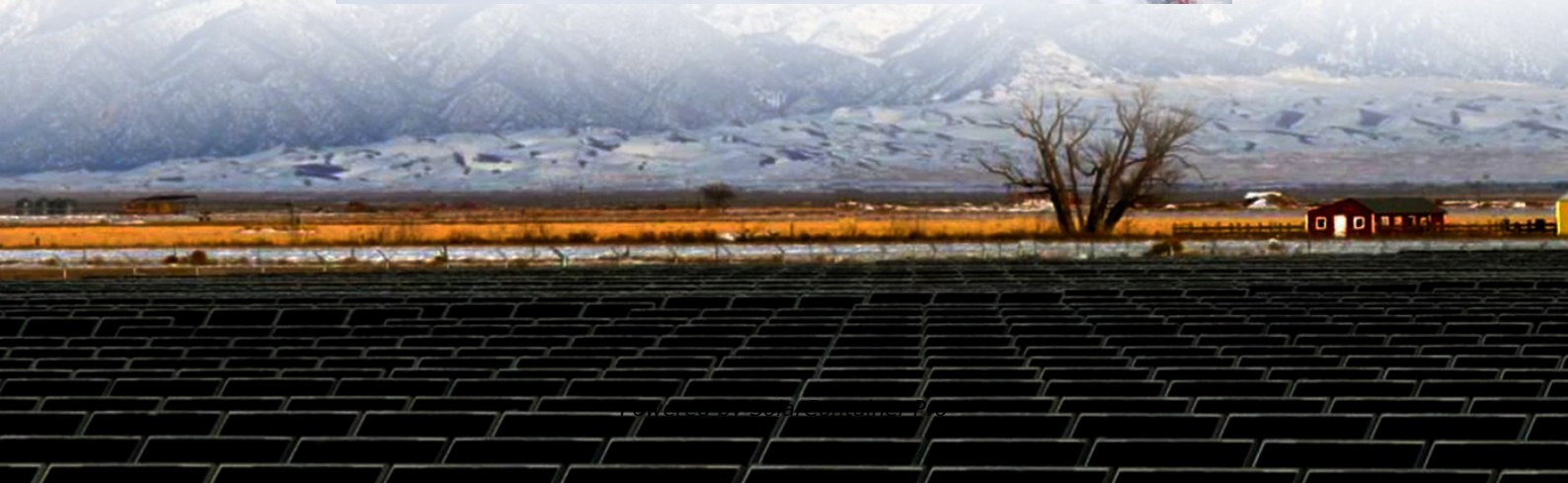


What inverter capacity should be used for a 50kw power station





Overview

Before we go any further, we highly recommend that you choose a pure sine wave inverter. This type of inverter delivers high-quality electricity, similar to your utility company. This way, none of your appliances run the risk of being damaged. Now, when it comes to sizing your inverter, you always need to check.

We have summarized the appliances that inverters from 300W to 3000W can run depending on their rated maximum power. Note to our readers: Use the above formula to determine.

Why should you choose a solar inverter rated in kW?

Inverters must handle peak solar input, battery charging, and load output—all at once. Choosing an inverter rated in kW (not just kVA) gives you a clearer view of real usable power. This prevents undersizing and keeps your solar-storage system running efficiently.

What is a 50kw solar power system?

Type: 50KW Hybrid Solar System The 50kw solar power system consists of solar panels, a 50kw solar hybrid inverter, 81.92kwh solar batteries lithium-ion type, mounting structures, and solar accessories, it is suitable for single phase electricity power needs in residential and commercial areas with high-power consumption needs.

How many kW can a 10 kVA inverter handle?

If your inverter has a power factor of 0.9, then a 10 kVA inverter will deliver only 9 kW of real output. This means the inverter can only handle 10.2 kW of actual load—not 12. Understanding this gap helps avoid overspending on capacity or overloading your system. How does this apply to solar and hybrid inverter systems?

.

How much power does a 5 kW inverter use?



If your system pushes 5,000 watts, a 5,000-watt (or 5 kW) inverter is usually the move. But it's not always one-to-one. Some setups undersize the inverter a bit—say, 4.6 kW for 5 kW of panels—to save cash without losing much power. It's a balancing act between cost, performance, and when you actually use electricity.

Do I need an inverter size chart?

The need for an inverter size chart first became apparent when researching our DIY solar generator build. Solar generators range in size from small generators for short camping trips to large off-grid power systems for a boat or house. Consequently, inverter sizes vary greatly.

How to choose a solar inverter?

Choose an inverter that has a surge watt rating equal to or greater than this value. As for voltage drop, check the wire length between your solar panels and the batteries. If the wire length is long, you may need to choose a lower voltage system (12V, 24V, or 48V) to minimize voltage drop.



What inverter capacity should be used for a 50kw power station



[The Complete Off Grid Solar System Sizing Calculator](#)

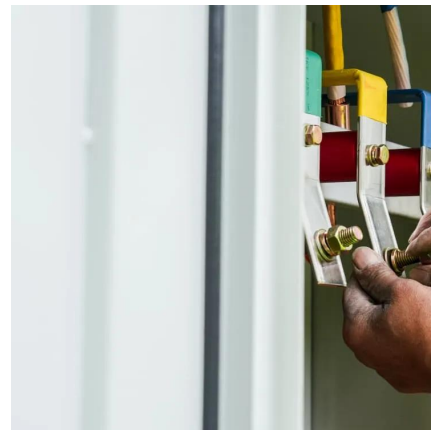
Below is a combination of multiple calculators that consider these variables and allow you to size the essential components for your off-grid solar system: The solar array. The ...

[WhatsApp](#)

[How To Size A Solar Inverter in 3 Easy Steps](#)

Choose an inverter that has a surge watt rating equal to or greater than this value. As for voltage drop, check the wire length between your solar panels and the batteries. If the wire length is ...

[WhatsApp](#)



Understanding Solar Inverter Sizes: What Size Do You Need?

One of the major things to consider when installing solar is the size of your solar inverter. You might have heard about 'undersizing' and 'oversizing' your solar PV system, but ...

[WhatsApp](#)

How much electricity can a 50kw energy storage inverter store?

A 50kW energy storage inverter can store and manage approximately 200 kWh of electricity. This is based on its ability to convert and



optimize energy from renewable sources, ...

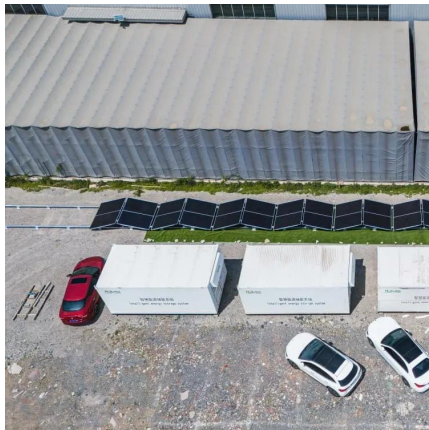
[WhatsApp](#)



Arnergy 50kW Inverter with Scalable (50kWh to 75kWh) LFP ...

Fulfill your high-capacity energy demands for commercial and residential purposes with the highly reliable Arnergy 50kW solar inverter and battery battery system that delivers a massive ...

[WhatsApp](#)



50kW Solar Power System for Commercial and Industrial Energy

The 50kw solar power system consists of solar panels, a 50kw solar hybrid inverter, 81.92kwh solar batteries lithium-ion type, mounting structures, and solar accessories, it is suitable for ...

[WhatsApp](#)



What Size Solar Inverter Do I Need? Experts Break It Down

But before you start soaking up the sun, you'll need the right inverter to match your system. This guide breaks down what size solar inverter you actually need--so your setup ...

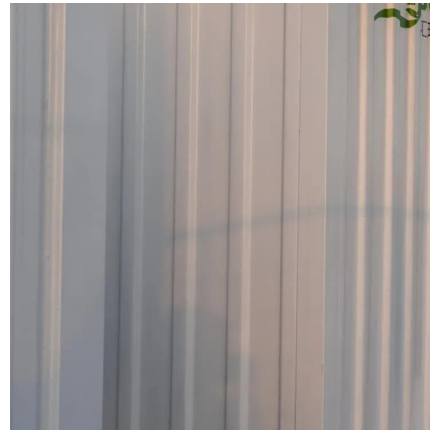
[WhatsApp](#)



[Ultimate Guide to Sizing Your Solar PV System](#)

The larger your battery, the more energy you can store for later use. 5. Inverter Capacity
Inverters convert the DC output of your panels to AC power for household or commercial use. Your ...

[WhatsApp](#)



[How to Decide Solar Inverter Capacity for Your Home](#)

Choosing the right solar inverter capacity is crucial for ensuring that your solar power system operates efficiently and meets your home's energy needs. Whether you're a first-time solar ...

[WhatsApp](#)

[How To Size A Solar Inverter in 3 Easy Steps](#)

When building a solar system, designing an off-grid power setup, or running appliances on backup power, one of the most essential steps is determining the correct inverter size. Choosing the ...

[WhatsApp](#)



Design Recommendations for Central Inverters in Utility-Scale ...

The Inverter Loading Ratio (ILR), which evaluates the reduced AC size of the Power Conversion System (PCS) in comparison to its DC size should be above 1.0. Maintaining a ...

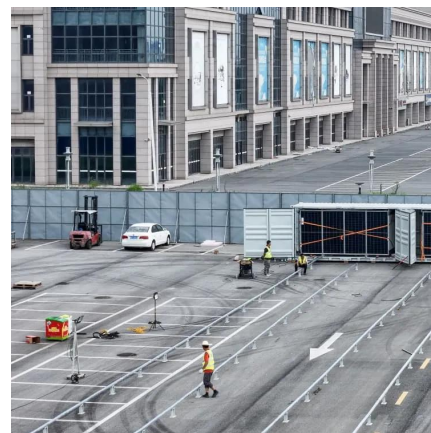
[WhatsApp](#)



Solar Inverter Sizing Guide for Maximum Efficiency , Mingch

This article explains how to calculate your inverter size, what affects it, and how to avoid costly mistakes, especially when using high-efficiency solutions like MINGCH Electrical's ...

[WhatsApp](#)



How Many Solar Panels Are Needed for a 50kW Solar System?

The inverter power must typically match the load power. Below are several 50kW inverters we can provide, including 50kW grid-tied inverters, 50kW off-grid inverters, and 50kW hybrid inverters.

[WhatsApp](#)

Understanding Inverter Power Ratings: kW vs kVA Explained

kW refers to the real or usable power output of an inverter. kVA represents the total power capacity it can carry, including power lost in phase difference (reactive power). For example, ...

[WhatsApp](#)





Contact Us

For catalog requests, pricing, or partnerships, please visit:
<https://www.straighta.co.za>