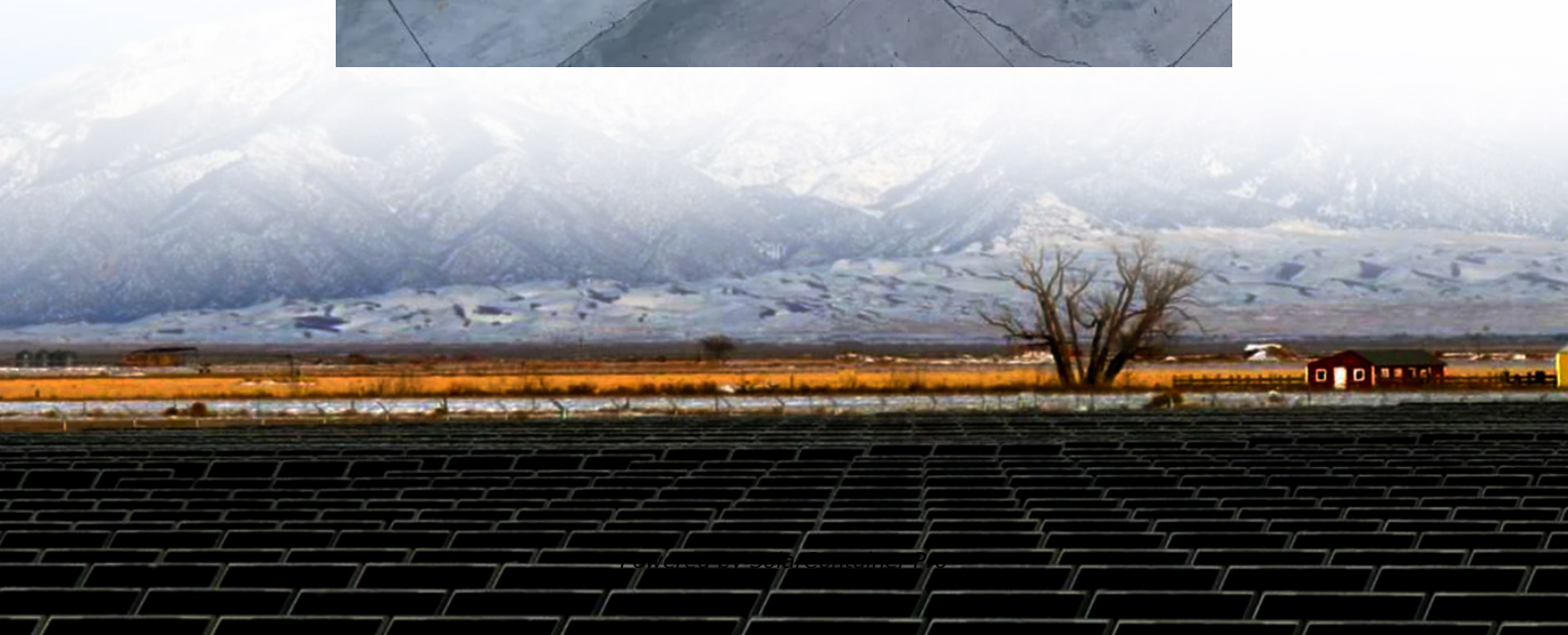


What equipment is required for energy storage power station





Overview

What are battery storage power stations?

Battery storage power stations are usually composed of batteries, power conversion systems (inverters), control systems and monitoring equipment. There are a variety of battery types used, including lithium-ion, lead-acid, flow cell batteries, and others, depending on factors such as energy density, cycle life, and cost.

What types of batteries are used in a battery storage power station?

There are a variety of battery types used, including lithium-ion, lead-acid, flow cell batteries, and others, depending on factors such as energy density, cycle life, and cost. Battery storage power stations require complete functions to ensure efficient operation and management.

What is an energy storage system?

An energy storage system (ESS) for electricity generation uses electricity (or some other energy source, such as solar-thermal energy) to charge an energy storage system or device, which is discharged to supply (generate) electricity when needed at desired levels and quality. ESSs provide a variety of services to support electric power grids.

Do energy storage power plants need a maintenance plan?

At every stage, compliance with regulatory requirements, safety standards and technical specifications is critical to ensuring the successful and efficient operation of an energy storage plant. Operation and maintenance plans for energy storage power plants cover all key aspects to ensure optimal performance and reliability.

What is the construction process of energy storage power stations?

The construction process of energy storage power stations involves multiple key stages, each of which requires careful planning and execution to ensure



smooth implementation.

Why do battery storage power stations need a data collection system?

Battery storage power stations require complete functions to ensure efficient operation and management. First, they need strong data collection capabilities to collect important information such as voltage, current, temperature, SOC, etc.



What equipment is required for energy storage power station



[Energy Storage Power Station Project Equipment: Key ...](#)

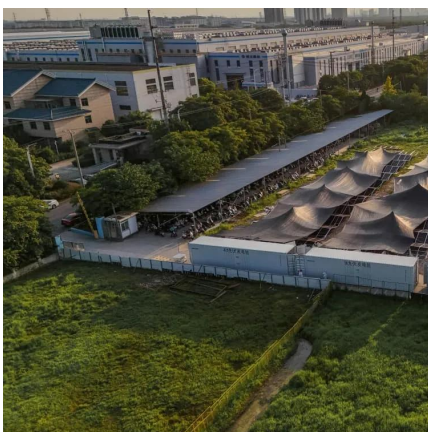
This article is for anyone from curious homeowners to hard-hat engineers - basically, anyone who wants to understand the nuts, bolts, and lithium-ion batteries behind modern energy storage ...

[WhatsApp](#)

[Battery storage power station - a comprehensive guide](#)

The guide covers the construction, operation, management, and functionalities of these power stations, including their contribution to grid stability, peak shaving, load shifting, ...

[WhatsApp](#)



Balance-of-System Equipment Required for Renewable Energy ...

A grid-connected system -- one that is connected to the electric grid -- requires balance-of-system equipment that allows you to safely transmit electricity to your loads and to comply with your ...

[WhatsApp](#)

Electricity explained Energy storage for electricity generation

They must use electricity supplied by separate electricity generators or from an electric power grid to charge the storage system, which makes



ESSs secondary generation sources. ESSs use ...

[WhatsApp](#)



What equipment does an energy storage power station need?

A variety of energy storage technologies are employed in power stations, with each offering distinct advantages. Lithium-ion batteries are at the forefront due to their high energy ...

[WhatsApp](#)



Energy Storage Power Station Costs: Breakdown & Key Factors

3 days ago · What factors influence O& M costs of energy storage power stations? Energy storage system O& M costs depend on equipment quality, fault rates, maintenance schedules, ...

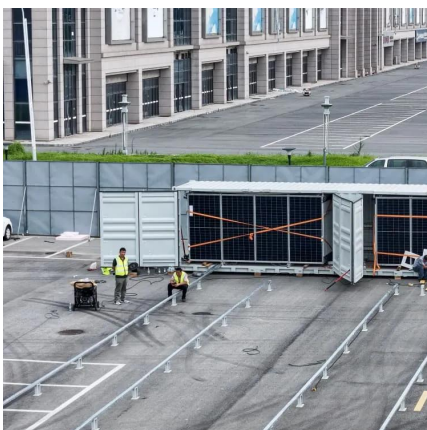
[WhatsApp](#)



What equipment does the energy storage power station control?

At the heart of energy storage power stations lies a complex network of equipment designed to store, manage, and dispatch energy. Each component possesses distinct ...

[WhatsApp](#)





1.Steam Thermal Power Plant and Coal Handling , PPTX , Power and Energy

This document provides information about the coal handling system used in steam thermal power plants. It discusses the various components of a coal handling system including coal delivery, ...

[WhatsApp](#)



[Electrical Systems of Pumped Storage Hydropower Plants](#)

Executive Summary While the concept of pumped storage hydropower (PSH) is not new, adjustable-speed pumped storage hydropower (AS-PSH) is equipped with power electronics; ...

[WhatsApp](#)



Battery energy storage system (BESS) integration into power ...

Primary power source support: in remote oil and gas operations where diesel or gas generators are the primary power source, BESS can store excess energy and provide backup power ...

[WhatsApp](#)



A Simple Guide to Energy Storage Power Station Operation and ...

In this blog post, we'll break down the essentials of energy storage power station operation and maintenance. We'll explore the basics of how these systems work, the common ...

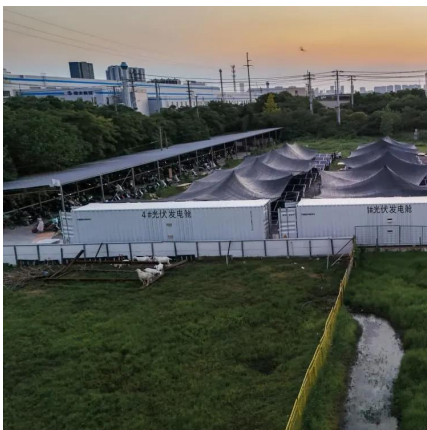
[WhatsApp](#)



What equipment does a low-voltage energy storage power station ...

1. Low-voltage energy storage power stations utilize various equipment to efficiently manage, store, and distribute energy, including 1. Energy storage devices, 2. Power ...

[WhatsApp](#)



Essential Equipment for Energy Storage Systems: A 2025 Guide

Imagine your smartphone's power bank - now scale it up to power entire cities. That's essentially what modern energy storage equipment does, but with far more complexity ...

[WhatsApp](#)

[Battery storage power station - a comprehensive guide](#)

The guide covers the construction, operation, management, and functionalities of these power stations, including their contribution to grid stability, peak shaving, load shifting, and backup ...

[WhatsApp](#)





Electricity explained Energy storage for electricity generation

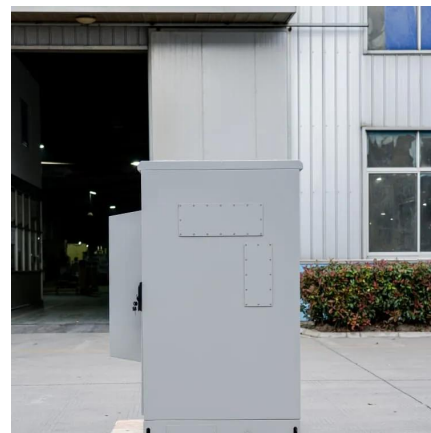
They must use electricity supplied by separate electricity generators or from an electric power grid to charge the storage system, which makes ESSs secondary generation ...

[WhatsApp](#)

[Energy storage power plant equipment](#)

What are battery storage power stations? Battery storage power stations are usually composed of batteries, power conversion systems (inverters), control systems and monitoring equipment. ...

[WhatsApp](#)



What equipment does an energy storage power station need?

Energy storage power stations require a variety of specialized equipment to ensure efficient and reliable operation. 1. Energy storage technologies, 2. Power conversion systems, ...

[WhatsApp](#)

Contact Us

For catalog requests, pricing, or partnerships, please visit:
<https://www.straightta.co.za>