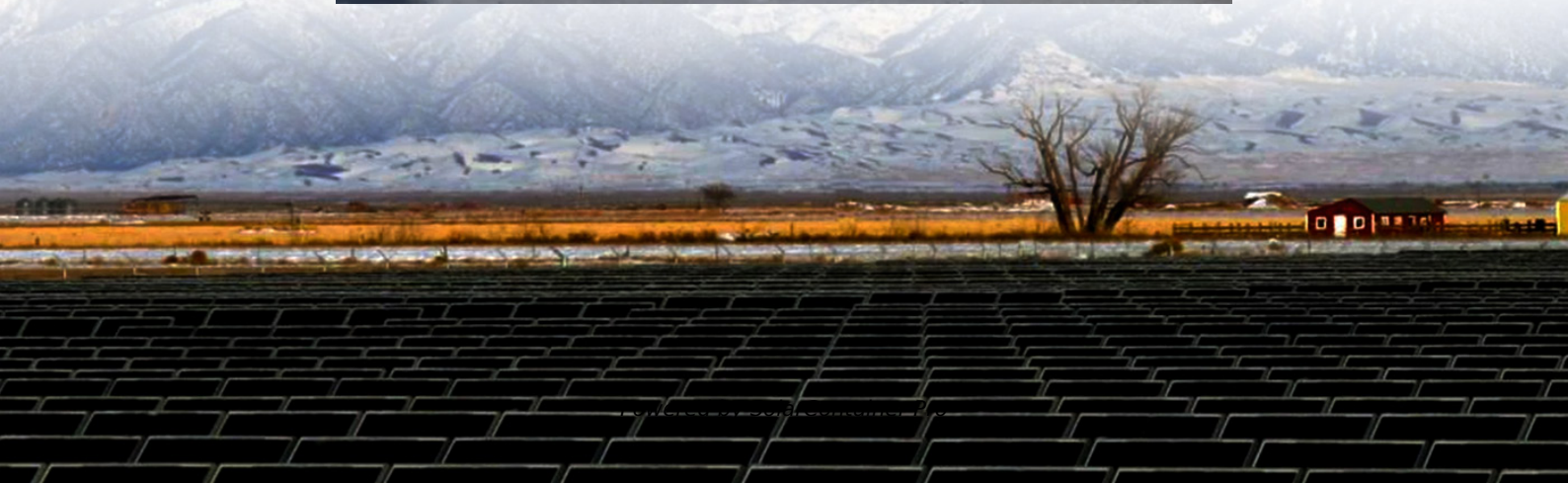


What equipment does a communication base station have





Overview

In the area of wireless computer networking, a base station is a radio receiver/transmitter that serves as the hub of the local wireless network, and may also be the gateway between a wired network and the wireless network. It typically consists of a low-power transmitter and .

The hardware components of a base station include antennas, radios, and processing units, while the software components include network management software and control software. Antennas are a key component of a base station, providing the interface between the wireless device and the base station. What is a base station in telecommunications?

In telecommunications, a base station is a fixed transceiver that is the main communication point for one or more wireless mobile client devices. A base station serves as a central connection point for a wireless device to communicate.

What is a base station in a wireless network?

In the area of wireless computer networking, a base station is a radio receiver/transmitter that serves as the hub of the local wireless network, and may also be the gateway between a wired network and the wireless network. It typically consists of a low-power transmitter and wireless router.

How does a wireless device communicate with a base station?

When a wireless device, such as a mobile phone, communicates with a base station, the device sends a signal to the base station, which converts the signal into digital form and sends it to the network. Similarly, when the network sends data to the device, the base station converts the digital data into a wireless signal that the device can receive.

What does a base station do?

Base stations are responsible for transmitting and receiving data to and from wireless devices, as well as managing network resources and ensuring reliable and efficient communication. The basic function of a base station is to convert wireless signals into digital signals that can be transmitted over a wired



network infrastructure.

How does a base station communicate with a client device?

Generally, if client devices wanted to communicate to each other, they would communicate both directly with the base station and do so by routing all traffic through it for transmission to another device. Base stations in cellular telephone networks are more commonly referred to as cell towers.

Why are base stations important for modern telecommunications?

In summary, base stations are critical for modern telecommunications as they serve as the link between mobile devices and the extensive network infrastructure that spans the globe. The strategic deployment and ongoing improvement of these stations are essential for maintaining global connectivity.



What equipment does a communication base station have



[Radio Base Stations for Secure Communication](#)

In the world of radio communications, a radio base station plays a vital role in ensuring reliable and seamless communication across a wide area. Whether used in mobile networks, ...

[WhatsApp](#)

What Is Base Station in Mobile Communication? - The Heart of ...

At the heart of this system lies the base station, a crucial component that enables seamless communication between mobile devices and the network. In this blog post, we will ...

[WhatsApp](#)



Base Stations and Cell Towers: The Pillars of Mobile Connectivity

It consists of electronic equipment, including transceivers, antennas, and signal processors, that manage the communication within a specific geographical area or "cell."

[WhatsApp](#)



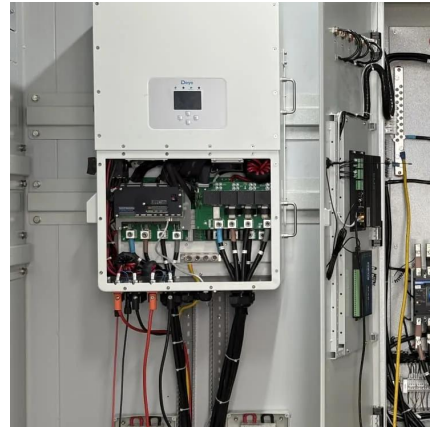
Guide to Base Station Communications Equipment , Office of ...

The first section discusses the frequency bands available to law enforcement agencies and factors that affect coverage in communications



between base and mobile stations. Advantages ...

[WhatsApp](#)



Base station

OverviewComputer networkingLand surveyingWireless communicationsSee also

In the area of wireless computer networking, a base station is a radio receiver/transmitter that serves as the hub of the local wireless network, and may also be the gateway between a wired network and the wireless network. It typically consists of a low-power transmitter and wireless router.

[WhatsApp](#)

Setting Up a Base Station CB Radio for Long Range Communication

A base station CB radio is a fixed communication device designed for long-range communication, often used in industries like trucking, off-roading, and rural settings.

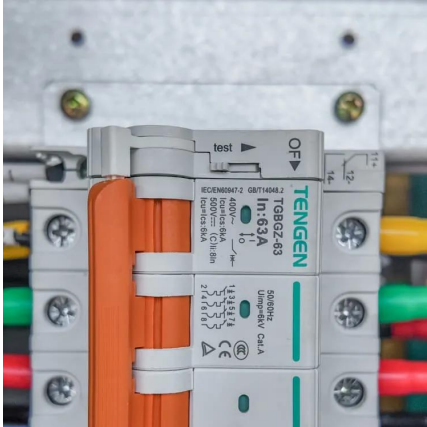
[WhatsApp](#)



The Base Station in Wireless Communications: The Key to ...

Equipped with an electromagnetic wave antenna, often placed on a tall mast, the base station enables communication between mobile terminals (such as mobile phones or ...

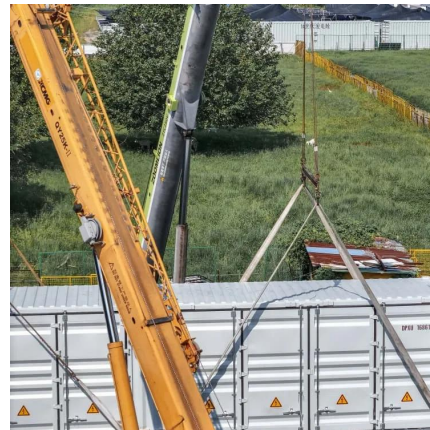
[WhatsApp](#)



[Air Force Tactical Communications Flashcards Quizlet](#)

Study with Quizlet and memorize flashcards containing terms like When you first turn on the AN/PRC-163, what will happen?, The multiband, handheld radio_____ (PA) is used for both ...

[WhatsApp](#)



Contact Us

For catalog requests, pricing, or partnerships, please visit:
<https://www.straighta.co.za>