

What equipment are commonly used in energy storage power stations





Overview

What are battery storage power stations?

Battery storage power stations are usually composed of batteries, power conversion systems (inverters), control systems and monitoring equipment. There are a variety of battery types used, including lithium-ion, lead-acid, flow cell batteries, and others, depending on factors such as energy density, cycle life, and cost.

What types of batteries are used in a battery storage power station?

There are a variety of battery types used, including lithium-ion, lead-acid, flow cell batteries, and others, depending on factors such as energy density, cycle life, and cost. Battery storage power stations require complete functions to ensure efficient operation and management.

Why do battery storage power stations need a data collection system?

Battery storage power stations require complete functions to ensure efficient operation and management. First, they need strong data collection capabilities to collect important information such as voltage, current, temperature, SOC, etc.

What is a battery energy storage system design plan?

Detailed battery energy storage system design plans were developed based on site surveys, geological assessments and technical specifications. This includes producing construction blueprints, drafting drawings from various disciplines (structural, civil engineering, electrical, etc.), and signing technical agreements with equipment manufacturers.

Why is system control important for battery storage power stations?

Secondly, effective system control is crucial for battery storage power stations. This involves receiving and executing instructions to start/stop operations and power delivery. A clear communication protocol is crucial to



prevent misoperation and for the system to accurately understand and execute commands.

What is the construction process of energy storage power stations?

The construction process of energy storage power stations involves multiple key stages, each of which requires careful planning and execution to ensure smooth implementation.



What equipment are commonly used in energy storage power station



What is the principle of solar energy storage power station?

Solar energy storage power stations operate on the storage of energy harnessed from sunlight for later use, facilitating a reliable energy supply regardless of the time of day. 1. ...

[WhatsApp](#)

What is the most advanced energy storage power station ...

This paper presents a comprehensive review of the most popular energy storage systems including electrical energy storage systems, electrochemical energy storage systems, ...

[WhatsApp](#)



Pumped storage power stations in China: The past, the present, ...

The pumped storage power station (PSPS) is a special power source that has flexible operation modes and multiple functions. With the rapid economic development in ...

[WhatsApp](#)

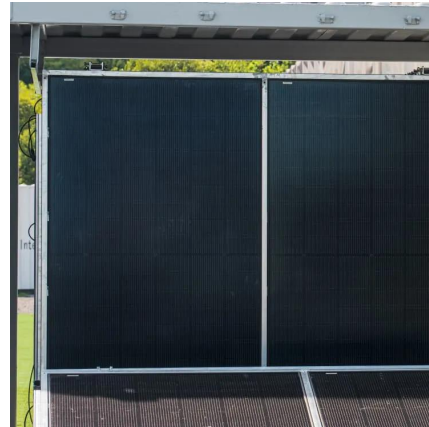
A Simple Guide to Energy Storage Power Station Operation and ...

Modern energy storage facilities are equipped with advanced monitoring systems and automation tools. These tools continuously



collect data on battery performance, ...

[WhatsApp](#)



Power Plant Energy Storage Equipment: The Backbone of Modern Energy

Modern power plants use: Lithium-ion batteries:
The rockstars of energy storage, powering
everything from Tesla's Megapack (which can
store 3 MWh--enough to power 3,000 ...

[WhatsApp](#)



[Battery storage power station - a comprehensive guide](#)

Battery storage power stations are usually
composed of batteries, power conversion
systems (inverters), control systems and
monitoring equipment. There are a variety of
battery types ...

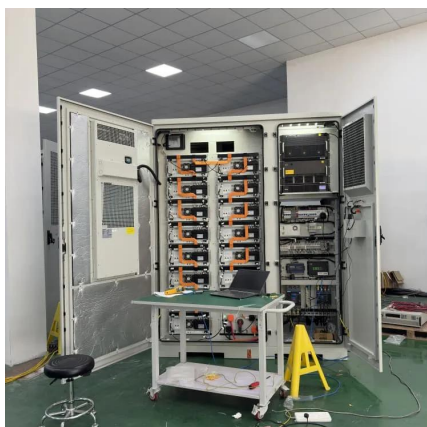
[WhatsApp](#)



What equipment does the energy storage power station control?

At the heart of energy storage power stations lies
a complex network of equipment designed to
store, manage, and dispatch energy. Each
component possesses distinct ...

[WhatsApp](#)





Major Electrical Equipment in a Power Station: A Comprehensive ...

The efficiency, reliability, and safety of power stations heavily depend on a wide range of electrical equipment. Each piece of equipment plays a specific role in the generation, ...

[WhatsApp](#)



What types of equipment are there in energy storage power stations

This detailed overview highlights how diverse equipment types cater to the varying needs of energy storage, contributing to efficiency and sustainability across energy systems.

[WhatsApp](#)

What types of equipment are there in energy storage power ...

This detailed overview highlights how diverse equipment types cater to the varying needs of energy storage, contributing to efficiency and sustainability across energy systems.

[WhatsApp](#)



Essential Equipment for Energy Storage Systems: A 2025 Guide

Imagine your smartphone's power bank - now scale it up to power entire cities. That's essentially what modern energy storage equipment does, but with far more complexity ...

[WhatsApp](#)



Electricity explained Energy storage for electricity generation

Energy storage for electricity generation An energy storage system (ESS) for electricity generation uses electricity (or some other energy source, such as solar-thermal energy) to charge an ...

[WhatsApp](#)



What technical equipment does the energy storage power station ...

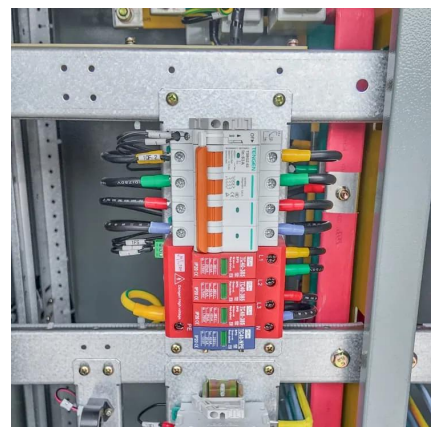
Energy storage power stations feature a range of technical equipment essential for efficient energy management. 1. Battery Storage Systems: These represent the core ...

[WhatsApp](#)

[What tools are needed for energy storage power stations](#)

Energy storage power stations require a variety of specialized equipment to efficiently store and release energy. 1. Key tools include batteries, inverters, transformers, and ...

[WhatsApp](#)





What equipment are commonly used in energy storage power stations

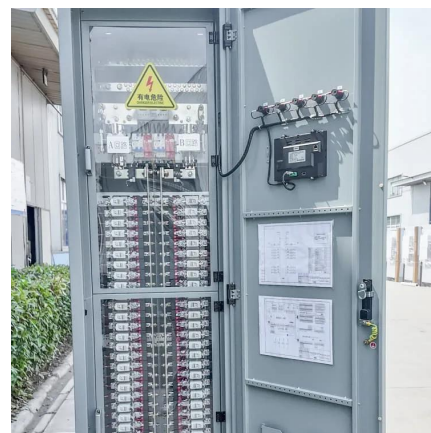
In this analysis, we will explore the major equipment utilized in energy storage power stations, highlighting their operational mechanisms and implications on the energy grid.

[WhatsApp](#)

What equipment does the energy storage power station have?

The principal category of equipment found in these stations includes energy storage systems (ESS), such as batteries or pumped hydro storage, which function as reservoirs for ...

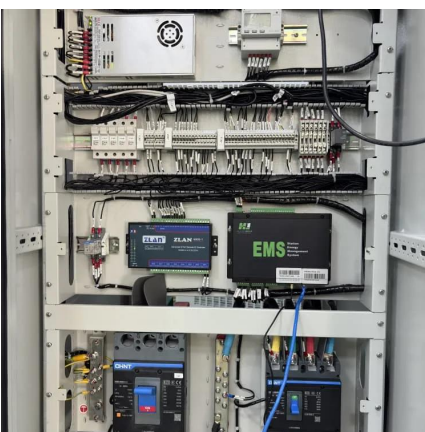
[WhatsApp](#)



What equipment does a grid-connected energy storage power station ...

A grid-connected energy storage power station comprises various specialized equipment designed to facilitate energy management and ensure reliable integration with the ...

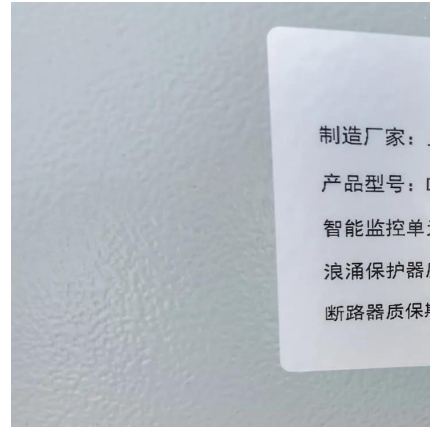
[WhatsApp](#)



What operations are required for energy storage power stations?

1. Energy storage power stations necessitate a variety of operations for optimal efficiency and performance, including 1. Site selection and design, 2. Technology deployment, ...

[WhatsApp](#)



Power Plant Energy Storage Equipment: The Backbone of ...

Modern power plants use: Lithium-ion batteries: The rockstars of energy storage, powering everything from Tesla's Megapack (which can store 3 MWh--enough to power 3,000 ...

[WhatsApp](#)

[Energy Storage Power Station Project Equipment: Key ...](#)

If you've ever wondered why energy storage power station project equipment is suddenly the talk of the town, you're not alone. This article is for anyone from curious homeowners to hard-hat ...

[WhatsApp](#)



Contact Us

For catalog requests, pricing, or partnerships, please visit:
<https://www.straighta.co.za>