

What does wind power storage peak shaving mean





Overview

As we know, peak shaving lessens the energy demand at peak times, usually through energy storage or on-site generation. In other words, peak shaving cuts off the tops of the demand peaks. Whereas load shifting redistributes energy demand from peak times to off-peak times. What is peak shaving energy storage?

A2: Peak shaving energy storage involves storing excess energy during periods of low demand and using it during peak demand periods. This approach helps reduce the strain on the grid and can significantly lower energy costs. Battery storage is a popular method for energy storage in peak shaving. Q3: What are some common techniques for peak shaving?

.

How does energy storage facilitate peak shaving and load shifting?

Energy storage can facilitate both peak shaving and load shifting. For example, a battery energy storage system (BESS) can store energy generated throughout off-peak times and then discharge it during peak times, aiding in both peak shaving (by supplying stored energy at peak periods) and load shifting (by charging at off-peak periods).

Is peak shaving a good energy management technique?

This technique not only helps to reduce energy costs but also ensures reliable power supply during times of high demand. Overall, peak shaving is an effective energy management technique that can help consumers save money and reduce their carbon footprint.

How can a facility reduce energy consumption during peak shaving?

To implement peak shaving, a facility can temporarily reduce energy consumption by scaling down production or activating an on-site power generation system. Another option is to rely on a backup battery to provide power during peak hours.



What is the difference between peak shaving and demand response?

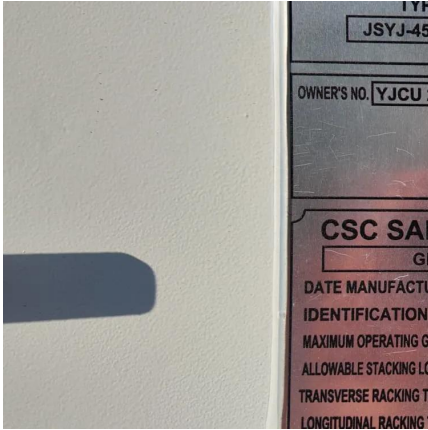
A9: Peak shaving involves using techniques such as load shifting, energy storage, or demand response to reduce peak energy demand, while demand response is one of the techniques used in peak shaving.

What is peak shaving?

With peak shaving, a consumer reduces power consumption ("load shedding") quickly and for a short period of time to avoid a spike in consumption. This is either possible by temporarily scaling down production, activating an on-site power generation system, or relying on a battery.



What does wind power storage peak shaving mean



Peak shaving - How companies reduce their power consumption

? Use of storage systems: By using battery storage systems or other systems such as cold stores as energy storage, companies can store surplus energy at convenient times and use it during ...

[WhatsApp](#)

[Load Shifting: What Is It and How Does It Work?](#)

Load shifting is an electricity management technique that shifts load demand from peak hours to off-peak hours of the day. In this article, we explore what is load shifting, its purpose, load ...

[WhatsApp](#)



Peak Shaving: Optimize Power Consumption with Battery Energy Storage

Peak shaving, or load shedding, is a strategy for eliminating demand spikes by reducing electricity consumption through battery energy storage systems or other means. In this article, we ...

[WhatsApp](#)

What role do renewable energy sources play in peak shaving

Role of Renewable Energy in Peak Shaving
Energy Storage and Utilization: Renewable energy sources like solar and wind generate



power at varying times throughout the ...

[WhatsApp](#)



Understanding what is Peak Shaving: Techniques and Benefits

Peak shaving energy storage involves storing excess energy during periods of low demand and using it during peak demand periods. This approach helps reduce the strain on ...

[WhatsApp](#)



[What does energy storage peak load regulation and ...](#)

Does es capacity enhance peak shaving and frequency regulation capacity? ower systems with high penetration of RE has not been clarified at present. In this context,this study provides an ...

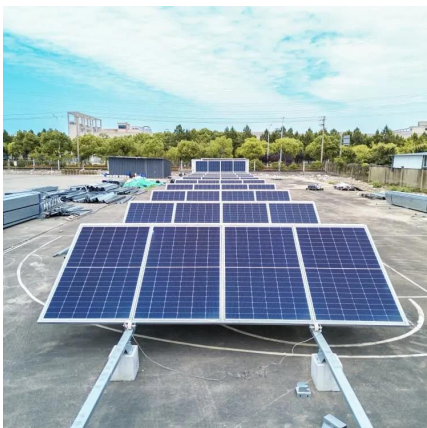
[WhatsApp](#)



[Peak shaving: Everything you need to know - gridX](#)

Peak shaving, also called load shedding, is a cost-saving technique used by businesses to reduce electricity expenses by minimizing peak electricity demand, thereby lowering demand charges.

[WhatsApp](#)





Peak Shaving: Save Energy, Cut Costs & Boost Grid Stability

Peak Shaving with BESS ? Solar power with battery storage maximizes renewables and enables peak shaving. Excess energy is stored and later discharged during low ...

[WhatsApp](#)



WHAT IS PEAK SHAVING AND HOW DOES IT WORK? , Solar Power ...

Peak shaving is a demand-side management strategy that reduces the maximum power demand on an energy system, typically during peak consumption times. By using energy storage ...

[WhatsApp](#)

How does peak shaving contribute to grid stability and resilience

In conclusion, peak shaving is a critical strategy for enhancing grid stability and resilience by managing demand peaks, enabling efficient use of energy storage, reducing ...

[WhatsApp](#)



WHAT IS PEAK SHAVING AND HOW DOES IT WORK? , Solar ...

Peak shaving is a demand-side management strategy that reduces the maximum power demand on an energy system, typically during peak consumption times. By using energy storage ...

[WhatsApp](#)



[Peak Shaving . What it is & how it works](#)

With peak shaving, a consumer reduces power consumption (" load shedding ") quickly and for a short period of time to avoid a spike in consumption. This is either possible by temporarily ...

[WhatsApp](#)



What role does energy storage play in peak shaving and load ...

Energy storage plays a critical role in both peak shaving and load shifting by enabling the management and optimization of electricity consumption relative to demand periods.

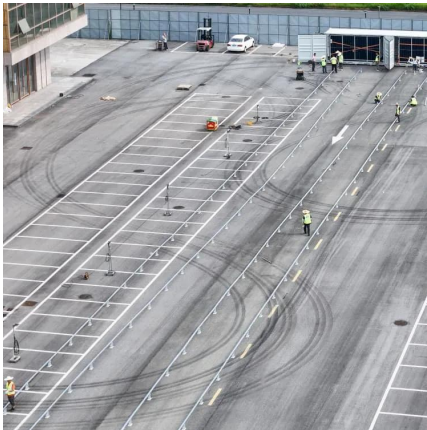
[WhatsApp](#)

[The Power of Peak Shaving: A Complete Guide](#)

As we know, peak shaving lessens the energy demand at peak times, usually through energy storage or on-site generation. In other words, peak shaving cuts off the tops of the demand ...

[WhatsApp](#)





What is peak shaving? Grid stabilization clearly explained

A battery from Bnewable offers many benefits, including peak shaving or peak smoothing. By reducing the peaks in your power consumption, you pay less grid costs and contribute to a ...

[WhatsApp](#)

Contact Us

For catalog requests, pricing, or partnerships, please visit:
<https://www.straighta.co.za>